



Singapore

Photo: Coleen Rivas/unsplash



Bna Ignacio/Unsplash.com



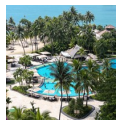
MOLPIX/Shutterstock.com



August Phunitiphat/Shutterstock.com

Singapore is a fascinating melting pot of East and West. Here the hypermodern buildings of the financial district blend with Chinatown's classic small houses. As an old trading town, Singapore is the natural place for anyone who wants to shop - the range is enormous. In addition, Singapore offers a cuisine with influences from all corners of Asia that exceeds the highest expectations.

Featured



Sentosa

The island resort of Sentosa is a marvellous one-day beach escape from the b...



The Southern Ridges

A remnant of the luxurious greenery once covering the whole of the island, t...



Singapore Flyer

Standing at 165 meters, the Singapore Flyer is even taller than the London E...



Raffles Hotel

The Singapore Sling was created here in 1915, by the bartender Ngiam Tong Bo...



First Generation - Bronze ...

The series of bronze sculptures spread across Singapore represent the lives ...

Top 5



Gardens by the Bay

Gardens by the Bay are among the world's most spectacular urban developments...



Tiger Brewery Tour

Tiger lays claim to have been the first beer brand in the country, launched ...



Jewel Changi Airport

Singapore's Changi Airport has won multiple awards (voted "Best in the World...)



Marina Bay Sands Observati...

The iconic Marina Bay Sands dominates Singapore's cityscape, and is probably...



Henderson Waves

The Henderson Waves bridge is the highest pedestrian bridge in Singapore -- s...



THE CITY



Leonid Andronov/Shutterstock.com

Singapore is clean, safe and efficient and the inhabitants are as proud of this as they are of the city's great financial heart beating around the clock. The harbour is the busiest in the world and capital flows on the stock exchange. All the world's banks, insurance companies and investors are represented here.

In 200 years, Singapore has gone from being a deserted island to an eminent industrial nation and major financial power, as reflected in the flourishing townscape.

A good start for anyone who wants to experience Singapore today, with its mixture of old and new, is to have a drink on Boat Quay in the late afternoon. The renovated harbour district is packed with bars and restaurants. People from the financial district also meet here after work to socialise.

Another traditional watering hole is Raffles Hotel, built in the Colonial style. Is there anything more embedded in mystic than to drink a Singapore Sling in the hotel's Long Bar? It is a fantastic environment for a drink, the perfect way to experience Singapore and perhaps the very best way of all to experience the meeting between the city's exciting history and modern times.

Anyone who is looking for the original Singapore might like to head for the crowds of Chinatown where fortune-tellers, calligraphers and temple visitors are a permanent feature of everyday life. In Little India you will find the best Sari fabrics and lots of exciting spices. Don't miss the small shops on Arab Street either.

SUSTAINABLE CITY



Meriç Dağlı/unsplash.com

The development of Singapore into a Garden City began all the way back in the 1960s when then Prime Minister Lee Kuan Yew suggested the creation of softening the harsh urban environment with green spaces. Since then, Singapore has evolved into a bustling metropolis nestled in a lush embrace of tropical greenery.

In 2021, the country's government launched its Green Plan 2030 — the next step that is focused not only on creating and maintaining green spaces, but also places importance on sustainability, conserving the natural heritage and involving the local community.

Some key programs of the Green Plan include setting aside 50% more land (around 200 hectares) for nature parks which will all be within a 10-minute walk to a respective household and aiming to plant one million more trees across the island to absorb more CO₂,

resulting in the population enjoying cleaner air, and cooler shade.

The Green Plan charts ambitious and concrete targets over the next 10 years, strengthening Singapore's commitments under the UN's 2030 Sustainable Development Agenda and Paris Agreement. The city-state is getting ready to achieve the long-term net zero emissions aspiration as soon as viable.

For all the hard work, Singapore is widely recognised as the most eco-friendly city in Asia.

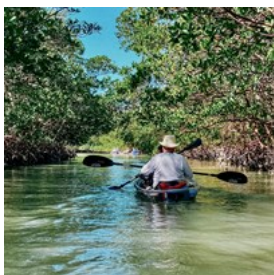
Gardens by the Bay



The Gardens by the Bay are among the world's most spectacular urban developments. The spectacular park also offers numerous benefits to the environment. Gigantic "Super-trees" house 158,000 plants that help offset some of the city's carbon emissions. They also collect rainwater into reservoirs that are used to water the rest of the park. Some of the "Super-trees" are equipped with solar panels.

Photo: Sergio Sala/unsplash.com
Address: 18 Marina Gardens Dr, Singapore
Opening hours: Daily 9am-9pm
Internet: www.gardensbythebay.com.sg

Kayaking through the Mangrove Forest



Pulau Ubin is an island northeast of mainland Singapore. Cycle trails and hiking trails criss-cross the hills, taking you past the disused granite quarries into traditional villages known as "kampongs". Bright blue kingfishers

and bulbul songbirds inhabit the tidal flats of the Chek Jawa Wetlands.

See a different side of Singapore with a guided kayaking tour. Soak in the tranquil environment while learning about the ecosystem. All equipment provided and no kayaking experience is necessary.

Photo: Katelynn Hilden/unsplash.com
Address: Shophouse No. 34, Pulau Ubin island, Singapore
Internet: www.asiandetours.com/post/earth-hour-what-you-need-to-know

Ride the MRT



Taking the rapid transit trains in Singapore is not only better for the environment, but it also allows you to experience Singapore a little bit more like a local. Grab an EZ-Link card or buy a Singapore Tourist Pass and use the MRT, buses, and your feet to explore the city.

With the help of public transportation you can see more of Singapore in one day than most visitors can fit into a week.

Start your tour at HarbourFront. Have breakfast, spend some time strolling along the water and enjoying the morning sun before you embark on your journey on the Yellow Line. Stop at Labrador Park, Kent Ridge Park, or Haw Par Villa.

Switch to the Green Line and make a stop at Chinese Garden with picturesque pagodas, statues, bridges and plants. You can spend the afternoon here, wandering between the linked islands on Jurong Lake. Still on the Green Line, Tiong Bahru is great for lunch. For more parks,

head to Pasir Ris, where you can cycle, ride horses and kids can have fun at a playground.

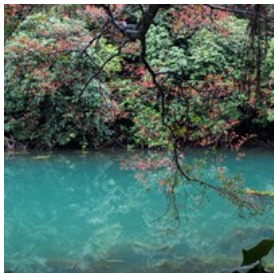
In the evening, switch to the Purple Line to get to Chinatown. Colourful architecture, heritage temples and traditional eateries that serve dim sum and yum cha wait for you here.

You can finish your day of exploration by taking the Blue Line to Bayfront, next to the Marina Bay Sands SkyPark. Have a drink with a panoramic view of the bay at sunset and enjoy the laser light show.

Photo: shawnanggg/unsplash.com

Internet: www.lta.gov.sg/content/ltagov/en/getting_around/public_transport/rail_network.html

MacRitchie Reservoir & Nature Trail



One of the solutions to this problem was The MacRitchie Reservoir is Singapore's oldest water reservoir. Its main purpose is to collect rainwater and provides drinkable water to Singapore's residents. Additionally, the reservoir is the central feature in MacRitchie Reservoir Park.

The MacRitchie Nature Trail is a series of boardwalks that vary in length and take you through the tropical rainforest. The TreeTop Walk — one of the park's main draws — is a suspension bridge that gives you a bird's-eye view of the forest below.

On your walk, you will definitely see some monkeys. They are definitely cute, but can be a little naughty, especially if you are carrying any food.

Photo: [_paVan_/cc by 2.0/Flickr](#)(image cropped)

Tickets: Free

Sungei Buloh Reserve



Singapore does not only offer big city life and urban activities, but also spectacular stretches of pristine nature, especially in the north west, at the country's border with Malaysia. The Sungei Buloh Reserve is a great place to spot a variety of migratory bird species as well as lizards and other exotic animals. You can spend the whole day exploring the hiking trails at this vast mangrove reserve.

Photo: Aleksandra Pachecka/Shutterstock.com

Address: 301 Neo Tiew Crescent, Singapore

Opening hours: Daily 7am–7pm

Internet: www.nparks.gov.sg/gardens-parks-and-nature/parks-and-nature-reserves/sungei-buloh-wetland-reserve

Email: nparks_sbwr@nparks.gov.sg

DO & SEE



[anekoho/Shutterstock.com](#)

Singapore is a hectic metropolis with bustling street life. There are many sights to see here, and you can experience everything from a drink at legendary Raffles Hotel to meeting tigers at one of the world's finest zoos.

Gardens by the Bay



Gardens by the Bay are among the world's most spectacular urban developments. The Gardens' inauguration in 2012 marked a decisive step towards refashioning Singapore from "Garden City" to "City in a Garden" — it's easy to see why while wandering its 100+ hectares.

The Gardens' Supertree Grove consists of 18 tree-like structures, some reaching up to 50m in height. What's hard to wrap one's mind around is how closely these "trees" mimic their natural counterparts: overgrown with exotic plants and flowers, they mimic photosynthesis via a complex system of environmental technologies, and collect rainwater that later goes towards irrigation and fountain displays. There is a spectacular Skyway stretching between 2 of the tallest trees, which features a light and sound display at night.

Another two unmissable attractions at the Gardens are the two conservatories: the Flower Dome and Cloud Forest.

Photo: Sergio Sala/unsplash.com
Address: 18 Marina Gardens Dr, Singapore
Opening hours: Daily 9am-9pm
Internet: www.gardensbythebay.com.sg

Tiger Brewery Tour



Tiger lays claim to have been the first beer brand in the country, launched in 1932. Today, the lager is the most consumed on the Asian beer market. So, if you happen to be a beer lover and would like to gain a glance into the production facilities

of the company, regular tours are taking place here, followed by the chance to enjoy a cold one, or two, on site.

Photo: Viacheslav Rubel/Shutterstock.com
Address: Jalan Ahmad Ibrahim 459, Singapore
Opening hours: Guided Tours: Tuesday - Sunday starting every full hour from 1pm - 5pm.
Phone: +65 686 030 05
Internet: www.tigerbrewerytour.com.sg/
Email: brewerytour@apb.com.sg

Jewel Changi Airport



Singapore's Changi Airport has won multiple awards (voted "Best in the World" for 7 consecutive years), and the jewel in its crown of regalia is the world's tallest indoor waterfall, fittingly called just that: Jewel. The waterfall comes down from the roof, creating a breathtaking vortex which recirculates rain water. The Rain Vortex is surrounded by a multiple-level display of tropical flora, including various species of blooming orchids; the top level features a family-friendly canopy park, and there are dozens of further shopping and entertainment venues around.

One doesn't often hear of city residents doing day trips to the airport to simply spend time there, but it certainly is the case with Jewel -- you'll see many making the trip to Changi with no luggage whatsoever, with the sole purpose of visiting the Jewel.

Photo: SuperSN/Shutterstock.com
Address: 78 Airport Blvd, Singapore
Internet: www.jewelchangiairport.com
More Info: Changi Airport

Marina Bay Sands Observation Deck



The iconic Marina Bay Sands dominates Singapore's cityscape, and is probably the city-state's most recognisable attraction.

The imposing structure consists of three towers with a continuous lobby at the bottom (open to visitors), and topped with a spectacular SkyPark that links them all at roof level. The infinity pool is no longer accessible to those who aren't staying at the Marina Bay Sands Hotel, but the rooftop bar is, and so is the separate Observation Deck area (access via Tower 3 basement).

Photo: MOLPIX/Shutterstock.com

Address: 10 Bayfront Ave, Singapore

Phone: +65 6688 8826

Internet:

www.marinabaysands.com/attractions/sands-skypark.html

More Info: Tower 3

Henderson Waves



The Henderson Waves bridge is the highest pedestrian bridge in Singapore -- stranding the Mount Faber Park and Telok Blangah Parks,

it makes for what probably is the most exciting segment of the full Southern Ridges hike. Make it as long or short as you like (we recommend entering at HortPark and making your way there through the Treetop Walk). Keep moving west and you'll eventually arrive at a cable car station, from where you can continue on straight to the island of Sentosa.

Photo: Efired/Shutterstock.com

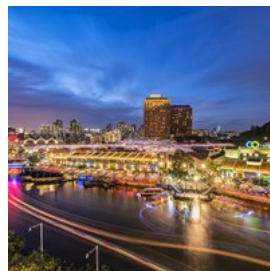
Address: Henderson Road, Singapore

Opening hours: 24/7

Internet: www.visitsingapore.com/see-do-singapore/architect

[ure/modern/henderson-waves/](http://www.visitsingapore.com/see-do-singapore/architect/ure/modern/henderson-waves/)

Clarke Quay



This riverside quay was once the entrepôt centre of the Singapore harbour. Now a bustling nightlife area, the run-down warehouses - "go downs"

- have been turned into nightclubs, restaurants and flea markets. Though fully renovated, historical buildings have been preserved, letting it retain its special character.

Photo: People Image Studio/Shutterstock.com

Address: 3 River Valley Road, Singapore

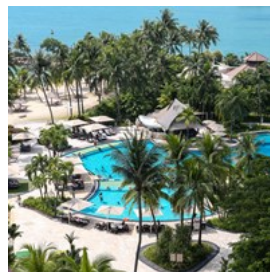
Phone: +65 6337 3292

Internet: www.capitaland.com/sg/malls/clarkequay/en

Email: ask-us@capitalandmallasia.com

More Info: Upstream from Boat Quay

Sentosa



The island resort of Sentosa is a marvellous one-day beach escape from the bustling city. It's an artificial island with very real sand and

swaying palm trees casting pleasant shadow, as well quite a few recreation options, particularly in the Palawan Beach area. Transport connections to the mainland are ample.

Photo: Andrew-Media/Shutterstock.com

Internet: www.sentosa.com.sg

Singapore Zoo



The Singapore Zoo is a so called "open zoo" and a world famous zoological garden with 315 animal species, of which approximately 60 are

endangered. You can find all the big cats here: lion, tiger, jaguar, leopard and puma, as well as rare white tigers. If you want to, you can meet orangutans face-to-face. Most of the animals are kept in spacious, landscaped enclosures separated from the visitors by dry or wet moats. Dangerous animals are housed in landscaped glass-fronted enclosures. The park also offers an exciting Night Safari and River Safari, all available as part of discounted entry ticket bundles (along with the Bird Park in Jurong).

Photo: FamVeld/Shutterstock.com

Address: 80 Mandai Lake Road, Singapore

Opening hours: Every day 8.30am - 6pm

Phone: +65 6269 3411

Internet: www.mandai.com/en/singapore-zoo.html

Email: enquiry@wrs.com.sg

The Sultan Mosque



The Sultan Mosque with its cupola and minarets gleams light green and is a very beautiful building in the Kampong Glam district. This mosque is the Muslims' most important building in Singapore (there are 68 mosques in the city in total). Visitors are welcomed to the mosques even if certain parts are still off limits to those who are not of the Muslim faith.

Photo: sunsetman/Shutterstock.com

Address: 3 Muscat Street, Singapore

Phone: +65 6293 4405

Internet: www.sultanmosque.sg

Fort Canning Park



This park, in the middle of the colonial city centre, is a great spot for anyone who wants to learn more about Singapore's military history. Raffle's last home during his time in the city is also here. An exciting tour of the subterranean command headquarters used by the British during the Second World War is a must when visiting the park.

Photo: Arndale/Shutterstock.com

Address: 51 Canning Rise, Singapore

Phone: +65 6471 7361

Internet: www.nparks.gov.sg

Email: nparks_public_affairs@nparks.gov.sg

Singapore Flyer



Standing at 165 meters, the Singapore Flyer is even taller than the London Eye. This Ferris wheel gives you a visual feast of the Marina Bay and the great icons and landmarks of Singapore.

Photo: Maylat/Shutterstock.com

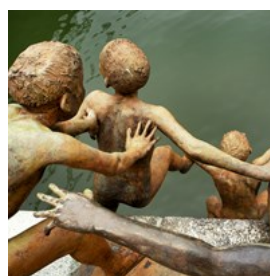
Address: 30 Raffles Avenue, Singapore

Opening hours: Mon - Sun 9am - 6pm

Phone: +65 6333 3311

Internet: www.singaporeflyer.com

First Generation - Bronze Bathers



The series of bronze sculptures spread across Singapore represent the lives of local people before Singapore became the modern metropolis it is today. One instalment of this series are the Bronze Bathers, located at Boat Quay.

Photo: One Percent/Shutterstock.com
Address: Boat Quay, Singapore
More Info: Near Fullerton Hotel

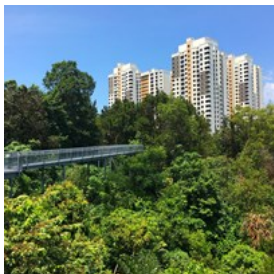
Holland Village



Often referred to as "Holland V," this happening area is popular with young Singaporeans and expatriates. It offers a bohemian mix of fine restaurants, cool bars and street eateries. Holland Village also is a hub for antiques, with many outlets dealing arts and handicrafts, especially home ware and furniture.

Photo: ZDL/Shutterstock.com
Address: Holland Village, Singapore
Public Transport: Buona Vista
Internet: www.holland-village-singapore.com

The Southern Ridges



A remnant of the luxurious greenery once covering the whole of the island, the Southern Ridges are a series of green spaces strung along 9 km. Take the elevated Canopy Walk through the rainforest, stop to study all things gardening at Hort Park, then cross the beautifully designed Henderson Waves bridge, and, finally, take the cable car down to Sentosa Island after having admired the panoramic view from Mount Faber.

Photo: Keitma/Shutterstock.com
Address: Henderson Road, Singapore
Phone: +65 1800 471 7300
Internet: www.nparks.gov.sg
Email: nparks_public_affairs@nparks.gov.sg

Chinatown

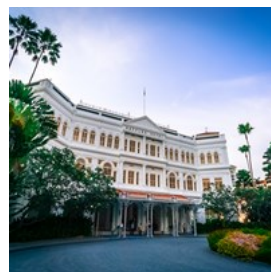


Construction of the Chinese district of Singapore started in 1828 and started out rougher, more cramped and crowded than it is today.

Most of it has been renovated, but the narrow streets and shops remain, as do several large markets. Drop into the Peoples Park Complex shopping centre and Chinatown Complex market where the experience receives added dimensions.

Photo: Stockforlife/Shutterstock.com
Address: South Bridge Road, Singapore
Public Transport: Chinatown (can also be reached from Outram station)
Internet: www.chinatown.sg
More Info: South Street, South Bridge Road, Eu Tong Sen Street and Sago Street

Raffles Hotel



The Singapore Sling was created here in 1915, by the bartender Ngiam Tong Boon, and is still served at the timeless Long Bar. This is a wonderful hotel with a great atmosphere, a museum and beautiful gardens. Food is important at the hotel where the cuisine is world-class. For anyone who wants to learn to cook like the great chefs, courses are given at the Raffles Culinary Academy. Just outside the entrance stands, perhaps, the world's most photographed doorman.

Photo: Phillip Maguire/Shutterstock.com
Address: 1 Beach Road, Singapore
Public Transport: City Hall
Phone: +65 6337 1886
Internet: www.raffleshotel.com

Esplanade



At the mouth of the Singapore River lies the Esplanade, a performance art centre featuring a concert hall, a theatre hall, recital and rehearsal studios, as well as outdoor performance spaces. Casually referred to as "the Durian" because of its resemblance of the famous tropical fruit, the architecturally stunning building boasts some of the world's best acoustics. Even with no one on stage, this is a great spot for lunch or afternoon tea at the neighbouring Esplanade Mall.

Photo: leungchopan/Shutterstock.com
Address: 1 Esplanade Drive, Singapore
Public Transport: City Hall
Phone: +65 6828 8377
Internet: www.esplanade.com
Email: corporate@esplanade.com

DINING



PSno7/Shutterstock.com

Singapore is an unparalleled city when it comes to food - a number of major Asian cuisines blend with the best of the Occident. Indian, Malay, Japanese, Chinese and Singapore's own cuisine meets in Singapore and the result is a fantastic choice, both in terms of the number of restaurants and the quality. In Singapore, you can eat cheap and tasty at one of the hawker centres, which used to be open air complexes

selling a variety of foods, and are today slowly being replaced by indoor air-conditioned food courts.

Makansutra Gluttons Bay



Set smack in the middle of the action with the Marina Bay Sands in plain sight, Gluttons Bay is a row of hawker stalls serving all manner of Singaporean delights straight off the sizzling pans and grills to the lucky ones who manage secure a spot in the outdoor dining area that tends to fill up very quickly, especially at rush hour. A must-try to start with is a classic oyster omelette.

Photo: simonharrycollins/Shutterstock.com
Address: 8 Raffles Avenue, Singapore
Opening hours: Opens 5pm
Phone: +65 6438 4038
More Info: Esplanade Mall

Chinatown Complex



The complex's primary attraction is food, and lots of it: apart from the celebrated, Michelin-listed Soya Sauce Chicken Rice Noodle that continuously draws lines, there are dozens of other stalls, including those serving fresh juices and even draft beers.

Photo: 2p2play/Shutterstock.com
Address: 335 Smith Street, Singapore
Opening hours: 24/7
Phone: +65 9677 6336

A Noodle Story



Squeezed up among the stalls of Amoy Street Food Centre (which in itself is worth a browse around) is its indisputable standout: A Noodle Story, one of Singapore's most revered ramen outlets. Springy noodles are served here with HK-style wonton, crispy potato-wrapped prawn, "hot spring" egg and other flavour-concocting additions.

Photo: [siam.pukkato/Shutterstock.com](#)
Address: 7 Maxwell Road, Singapore
Phone: +65 9027 6289

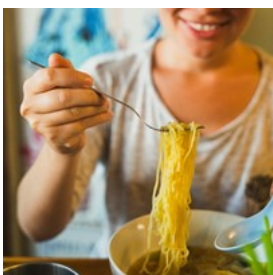
Tai Hwa Pork Noodle



Little does the uninformed visitor know walking by this unassuming little place that not only does it serves some of the best bak chor mee pork noodles in Singapore, but also has a Michelin star to its name. Prepare to wait (and be duly rewarded), while only parting with a few Singaporean dollars.

Photo: [Lam Tom/Shutterstock.com](#)
Address: 466 Crawford Lane, Singapore
Phone: +65 6292 7477
Internet: [www.taihua.com.sg](#)

Newton Food Centre



This is a major hawker centre in Newton, Singapore. The centre is often promoted as a tourist attraction in itself, and here you can find practically everything when it comes to food: noodles, satay, fried oysters and lobsters.

Photo: [Dmitry Galaganov/Shutterstock.com](#)

Address: Clemenceau Ave North, Newton Circus, Singapore
Public Transport: Newton
More Info: [Along Clemenceau Ave North, Newton Circus](#)

Timbre+



A hawker centre for the young, hip crowd, Timbre+ offers an impressive selection of food stalls serving a selection of modernised local classics and introducing quite a few new, less familiar flavor combinations. Live music plays Monday through Saturday nights. Stop by the Bottle Shop for exclusive beers.

Photo: [Vanzyst/Shutterstock.com](#)
Address: 73A Ayer Rajah Crescent, Singapore
Phone: +65 6252 2545
Internet: [www.timbreplus.sg](#)
More Info: [JTC LaunchPad @ one-north](#)

Odette



With its two Michelin stars, Odette remains a highly sought-after experience, with savvy travellers making reservations up to one month in advance. The space is stunning visually (with whites and pastels defining the colour scheme) - a small appetiser of sorts for the spectacular culinary creations to come.

Photo: [Pietruszka/Shutterstock.com](#)
Address: 1 Saint Andrew's Road, National Gallery, Singapore
Phone: +65 6385 0498
Internet: [www.odetterestaurant.com](#)

Sun with Moon



Serving modern Japanese food in a comfortable setting, this restaurant has a different menu depending on the time of day you choose to visit.

Some of the dishes might be on the pricy side, but the quality and presentation are top notch. When here, try the kamameshi ("kettle rice"), flavoured rice steamed with various ingredients in an iron pot called a kama.

Photo: norikko/Shutterstock.com

Address: 501 Orchard Road, Singapore

Public Transport: Orchard

Opening hours: Every day 11am - 9.30pm

Phone: +65 6733 6636

Internet: www.sunwithmoon.com.sg

Email: info@sfb.com.sg

More Info: Wheelock Place

Shinji by Kanesaka



For top notch sushi and Japanese cuisine, head to one of the two Shinji by Kanesaka restaurants.

The flagship restaurant is located in the legendary

Carlton Hotel and holds the same standard as the luxury hotel. Prepare for above average prices; it is recommended to book ahead.

Photo: Marcelo_Krelling/Shutterstock.com

Address: 76 Bras Basah Road, Singapore

Phone: +65 6338 6131

Internet: www.shinjibykanesaka.com

Email: reservations@shinjibykanesaka.com

More Info: Via Seah Street lobby

Blu Kouzina



At Blu Kouzina, a dining room decorated with the traditional blue and white colours and waiters serving dishes such as mousaka, souvlaki and

grilled feta cheese give you the perfect atmosphere of Greece. The owner will happily to recommend his favourites and answer all your questions.

Photo: Radu Dumitrescu/Shutterstock.com

Address: 10 Dempsey Road, Singapore

Phone: +65 6875 0872

Internet: www.blukouzina.com

Email: blukouzina@singnet.com.sg

More Info: Dempsey Hill

CAFES



N8Allen/Shutterstock.com

Kopitiam - meaning "coffee shop" in Hokkien - are the local variety of neighbourhood cafes, and can be found all over the island. They're not just good for breakfast, but will serve a nice light meal any time of the day. Outlets offering breakfast as well as other savoury delights are the historic Killiney Kopitiam and the relatively new Toastbox franchise.

Ya Kun Kaya Toast



Multiple locations all around Singapore make it easy to locate a Ya Kun Kaya Toast, and it really is worth doing so in the morning, for a

quintessentially Singaporean start to the day of coconut jam toast (kaya) and a strong cup of coffee (kopi).

Photo: Minto.org/Shutterstock.com

Address: Far East Square, 18 China Street, Singapore

Phone: +65 6438 3638

Internet: www.yakun.com

The LoKal



The Australian head chef Darren Farr oversees The LoKal's exciting menu that draws on Aussie classics while making extensive use of

quintessentially local ingredients, as well as imported rarities like lobster. The "Pimp Your Breakfast" option allows you to have the day's most important meal your way (try the smoked salmon for choice of protein), and new specials are listed daily.

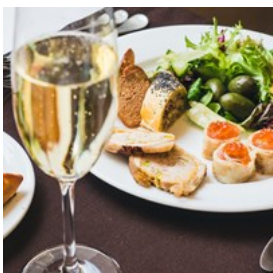
Photo: Joshua Resnick/Shutterstock.com

Address: 136 Neil Road, Singapore

Phone: +65 6423 9918

Internet: www.thelokalsingapore.com

Symmetry



Brunch seats at Symmetry are nearly impossible to have without prior reservation, but you can still give it a shot without one by

arriving at least an hour ahead of time. It's

somewhat of a hipster classic by now, complete with vintage decor pieces and indie music playing in the background.

Photo: VDVVD/Shutterstock.com

Address: 9 Jalan Kubor, Singapore

Phone: +65 6291 9901

Internet: www.symmetry.com.sg

Common Man Coffee Roasters



There is plenty to praise about Common Man Coffee Roasters, but if we had to zoom in on just one thing it would be the all-day breakfast/brunch

menu, featuring sweet and savoury international fusion delights. Reservations are available for groups of 5 and up (outside of weekends).

Photo: Waraporn Boonman/Shutterstock.com

Address: 22 Martin Road, Singapore

Phone: +65 6836 4695

Internet: www.commonmancoffeeroasters.com/pages/cafe

Killiney Kopitiam



Those on a hunt for authenticity must commit themselves to at least one quintessentially Singaporean breakfast of kaya jam and toast,

soft-boiled eggs, and a coffee. There are few better places to have it than the now century-old Killiney Kopitiam (multiple locations across the city).

Photo: Taddown Kamyodjai/Shutterstock.com

Address: 67 Killiney Road, Singapore

Phone: +65 6734 3910

Internet: www.killiney-kopitiam.com

Ah Chew Desserts



You'll barely run into a foreigner at this Singaporean dessert joint - if this prospect appeals to rather than repels you, head straight for a rainbow bread ice cream sandwich (roti), glass jelly drink or sago pudding (durian flavour if you're feeling especially adventurous).

Photo: 1981 Rustic Studio kan/Shutterstock.com
Address: 1 Liang Seah Street, Liang Seah Place, Singapore
Phone: +65 6339 8198
Internet: www.ahchewdesserts.com

Wild Honey



Wild Honey's two central Singapore locations serve all-day breakfasts from around the world, from Scandinavian to Caribbean, via Australia and most of Europe. It's a tad pricey, but oh-so worth it, for the food, ambience and service.

Photo: Kim Wutimet/Shutterstock.com
Address: 333A Orchard Rd, Mandarin Gallery, Singapore
Phone: +65 6235 3900
Internet: www.wildhoney.com.sg

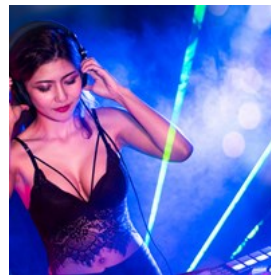
BARS & NIGHTLIFE



Arina P Habich/Shutterstock.com

Those who want to dance and enjoy themselves all night long have plenty of options in Singapore. Often, the visitor who is looking for something to drink in Singapore, is tipped off to try a Singapore Sling at Raffles, but there are lots of other alternatives.

Zouk



Zouk is one of Asia's finest clubs, occupying three old warehouses by the river. The club has Moorish and Aboriginal-influenced interior, a large dance floor, bars and dining options.

Photo: Pormezz/Shutterstock.com
Address: 3C River Valley Road, Singapore
Phone: +65 6738 2988
Internet: www.zoukclub.com.sg
More Info: Clarke Quay

The Long Bar



The interior of The Long Bar is inspired by Malayan plantations of the 1920s. The bar is located at Raffles Hotel, and is a relaxing place to start off your evening with a drink and soft tunes

from the band. The recommended order to be made here is the Singapore Sling, a cocktail one simply must try when in town.

Photo: katushOK/Shutterstock.com

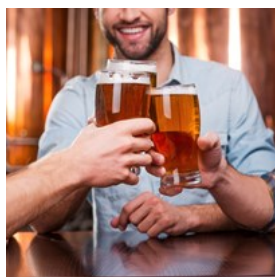
Address: 1 Beach Road, Singapore

Phone: +65 6412 1230

Internet: www.raffles.com

More Info: Raffles Hotel reopens after reconstruction in late 2018

Paulaner Bräuhaus Singapore



Paulaner Bräuhaus is a German style restaurant and pub in Singapore that will give you a true Bavarian experience in the heart of Asia. They have their own microbrewery, which is one of Singaporean few.

Photo: G-stockstudio/Shutterstock.com

Address: 9 Raffles Boulevard, Singapore

Phone: +65 6883 2572

Internet: www.paulaner-brauhaus.com/singapore

Email: info@paulaner-brauhaus-singapore.com

Orgo



Orgo lays special emphasis on drink and food ingredients, priding itself especially on using only the freshest, finest ingredients. Orgo's team is led by a professional mixologist and adviser to Bacardi Japa Tomoyuki Kitazoe.

Photo: AnnaMorozova/Shutterstock.com

Address: 8 Raffles Avenue, Singapore

Phone: +65 6336 9366

Internet: www.orgo.sg

Email: info@orgo.sg

Gallery & Bar at 1-Altitude



One of the most sought-after evening venues in Singapore, the 1-Altitude Bar boasts a 360 degree bird's-eye view over the city. Get

here before sundown to make the most of your evening in the bar's fashionable interior, and enjoy a masterfully crafted drink to music played by a live band or resident DJs.

Photo: Jacob Lund/Shutterstock.com

Address: 1 Raffles Place, Singapore

Opening hours: Sun - Tue 6pm - 2am, Thurs 6pm - 3am, Fri - Sat, Wed 6pm - 4am

Phone: +65 6438 0410

Internet: www.1-altitude.com

Email: info@1-altitude.com

Atlas Bar



Located on the ground floor of Singapore's Parkview Square building and sporting art decó-inspired interiors, the Atlas Bar is famous

for its world-class gin collection. Both the cocktails and dishes pay homage to the 'roaring twenties': you can couple your martini or Negroni with one of their specials, including lobster rolls and smoked beef short ribs.

Photo: Subodh Agnihotri/Shutterstock.com

Address: Parkview Square, 600 North Bridge Road, Singapore

Opening hours: Mon-Thu 10am-1am, Fri 10am-2am, Sat 12pm-2am

Phone: +65 6396 4466

Internet: www.atlasbar.sg

Email: info@atlasbar.sg

Comedy Masala



Every Tuesday, Singapore's biggest and most popular stand-up comedy show opens its doors at Hero's bar. The show was first founded by

Pakistani comedian Umar Rana and hosts international, local and regional comedians. So if you are up for a night of laughter alongside a few drinks, head right for 69 Circular Road in Singapore.

Photo: Fer Gregory/Shutterstock.com
Address: 69 Circular Road, Singapore
Opening hours: Tuesday at 8:00pm.
Phone: +65 8525 7414
Internet: www.comedymasala.com
Email: umar@comedymasala.com

SHOPPING



Syda Productions/Shutterstock.com

Locals joke that shopping is a national sport in Singapore, and there really is an enormous range in all price brackets to choose from. The artery of Singapore's shopping life is naturally Orchard Road, where the largest and most well-known department stores are lined up. Moreover, there are lots of shopping centres and markets around the city.

Suntec City



Eat, stroll and be impressed by this monumental indoor complex full of shopping arcades, cinemas, restaurants, conference

centres and works of art - including a gigantic fountain. Moreover, it is a good place to cool down when the tropical heat is too oppressive outside.

Photo: Kamil Macniak/Shutterstock.com
Address: 3 Temasek Boulevard, Singapore
Phone: +65 6266 1502
Internet: www.sunteccity.com.sg
Email: sales@suntecsingapore.com

Orchard Road



Orchard Road is the main shopping street in Singapore. There are department stores and shopping centres at an incomparable range

which beats most. Anyone who wants, could easily add a few days to their trip just to walk up and down Orchard Road in search for bargains.

Photo: Christian Mueller/Shutterstock.com
Address: Orchard Road, Singapore
Phone: +65 6733 1700
Internet: www.orchardroad.org
Email: info@orchardroad.org
More Info: Somerset and Dhoby Ghaut

Riverside



At Clarke Quay, there are a number of newly renovated harbour warehouses accommodating some 150 shops. They sell antiques,

clothes, souvenirs and other things, there is also a flea market on Sundays. Immediately adjacent is Liang Court, where there are a number of Japanese designer shops. Riverside Point is an exclusive shopping centre in the area.

Photo: leungchopan/Shutterstock.com
Address: Clarke Quay, Singapore

The Centrepoint



The Centrepoint is the largest and most popular shopping centre in Singapore. It houses boutiques specialising in, among other things, music, clothing, optics, electronics, furniture, and books - everything anyone might need. There are also many restaurants and fast-food outlets.

Photo: bikeriderlondon/Shutterstock.com
Address: 176 Orchard Road, Singapore
Opening hours: Every day 10am - 10pm
Phone: +65 6737 9000
Internet: www.thecentrepoint.com.sg
Email: promo@fraserscentrepoint.com
More Info: Somerset

The Heeren



The Heeren is primarily known for housing the upmarket Robinsons department store. The assortment of high-class items is ample in both the clothing and beauty departments, and several dining options are available as well.

Photo: EpicStockMedia/Shutterstock.com
Address: 260 Orchard Road, Singapore
Phone: +65 6738 4388
Internet: www.robinsons.com.sg
Email: OfficeEnquiries@heeren.com.sg

Ngee Ann City



It takes more than one day to properly get around this massive complex. The main attraction is Takashimaya, the large Japanese chain store. Apart from that, you'll find more than 100 specialised shops for sports, stationery, electronics, jewels and designer clothes. Brands like Boss, Zara and Mango are found here, as well as south-east Asia's largest bookstore, Konokuniya.

Photo: Syda Productions/Shutterstock.com
Address: 391 Orchard Road, Singapore
Opening hours: Every day 10am - 9.30pm
Phone: +65 6506 0460
Internet: www.ngeeanncity.com.sg
More Info: Orchard

Plaza Singapura



This is Singapore's first shopping mall with many shops, built in 1974 and a favourite with the locals. A one-stop-shop for lifestyle items with brands like Carrefour, John Little, Marks & Spencer and Best Denki.

Photo: Pressmaster/Shutterstock.com
Address: 68 Orchard Road, Singapore
Public Transport: Dhoby Ghaut
Opening hours: Every day 10am - 10pm
Phone: +65 6332 9298
Internet: www.plazasingapura.com.sg
Email: ask-us@capitalandmallasia.com

Chinatown



Chinatown is located just next to the financial district's skyscrapers. It is colorful, crowded and with typical aromas of the Chinese district (spices, herbs, medicines, fruit). In Tanjong Pagar one will find traditional tea shops, masks and other artwork. In the narrow Smith Street, Trengganu Street, Temple Street and Pagoda Street, it's easy to find all kinds of bargains. Do not forget Sago Street with its China stores. Peoples Park Complex shopping centre is a must, especially for the crowd. Do not miss OG People's Park, which has become popular with its fashion boutiques, jewellery and cosmetics.

Photo: HealthyBacon/Pixabay.com
Address: Chinatown, Singapore
Phone: +65 6221-5115
Internet: www.chinatown.sg
More Info: Outram or Chinatown

Marina Square



Bigger than seven football fields combined, Marina Square is one of the largest shopping malls in Singapore. Located at Marina Bay adjacent to Suntec City, the recently revamped mall is divided into eight uniquely thematic zones with over 250 stores on five levels. With its recently introduced Tourist Privilege program this is the mall where you can happily "shop until you drop!"

Photo: Elwynn/Shutterstock.com
Address: 6 Raffles Boulevard, Singapore
Opening hours: Every day 10am - 9.30pm
Phone: +65 6339 8787
Internet: www.marinasquare.com.sg

Sim Lim Square



Located near Bugis Street and regarded as the most established IT-mall in Singapore, Sim Lim Square is a six-storey complex guaranteed to satisfy your need for all things electronics. The first storey is devoted to consumer electronics and on the levels above, you will find IT-related products. Haggling is practised on all floors.

Photo: Dusan Petkovic/Shutterstock.com
Address: 1 Rochor Canal Road, Singapore
Public Transport: Bugis
Phone: +65 6338 3859
Internet: www.simlimsquare.com.sg

Far East Plaza



What Far East Plaza lacks in glamour, it certainly makes up for in diversity and bargaining fun. Located on Scotts Road just off Orchard, this mall, popular among locals as well as expatriates, boasts more than 800 stores and there is most certainly something for everyone.

Photo: wutzkohphoto/Shutterstock.com
Address: 14 Scotts Road, Singapore
Public Transport: Orchard
Phone: +65 67346837
Internet: www.fareast-plaza.com
Email: enquiry@fareast-plaza.com

TOURIST INFORMATION



JohnsonGoh/Pixabay.com

Airport



Like nearly everything else in the city, the Singapore Changi Airport is a miracle of efficiency. All services are provided locally and it is

recognised as one of the best airports in the world. Both its terminals are linked by a skytrain which operates both at the transit and public areas and Terminal 3. Obviously, the shopping is high class here as well.

Transportation to and from the city is excellent as the end station of one of the routes on the MRT tube is at the airport. The tube is also the cheapest and fastest way to the city. A taxi to the city takes around 30 minutes. Budget transport to the city and other parts of the island can also be by bus or by train. Terminals are located at the basement of airport terminals 1 and 2. Prepare the exact fare for buses as no change will be given. If you choose to go by train, you would have to switch trains at EW4 - Tanah Merah MRT Station to get downtown.

A Ground Transport Centre (GTC) is available at the Arrival Hall of both Terminals.

For more details on time tables and fares, pick up a copy of the MRT brochure at the Changi Airport MRT Station.

Photo: Juan Garces

Address: Airport Boulevard, Singapore

Phone: +65 6595 6868

Internet: www.changiairport.com

Passport / Visa



Citizens of the overwhelming majority of world countries do not require a visa for tourism stays of 30 to 90 days.

Nationals of some

countries do require a visa, which can often be easily obtained online and received in printable format. In order to be granted entry into Singapore, all visitors must produce a passport valid for 6 months from the date of departure, proof of sufficient funds for the duration of their stay, a return or onward ticket, visa for the following destination (if applicable), and a yellow fever vaccination certificate (please consult the up-to-date list of countries whose national require vaccination at your planned travel dates).

Photo: TukTuk Design/Shutterstock.com

Best Time to Visit



Singapore meets visitors with warm temperatures and nice weather nearly all year round, but the likelihood of rain is likewise present at all

times. Be aware that indoor temperatures in malls and the subway are often significantly lower than outdoors, so those especially sensitive

to such changes might want to carry a light jacket or sweatshirt. November through June are most popular with visitors, and with Chinese New Year also falling on that period, it might be reasonable to arrange for accommodation well in advance. Various festivals are held throughout the year.

Photo: VectorA/Shutterstock.com

Public Transport



The MRT (Mass Rapid Transit) tube with its driver-free trains is the artery of Singapore's local transport. The network comprises three

main lines which link up the city. The train runs from early in the morning until midnight and it is clean, fast and very safe. Tickets and different types of reduced rate tickets can be bought at all stations.

Singapore also has an extensive network of buses that cover local transport in areas to which MRT does not go. Buses are cheap and proportionately comfortable. There are buses both with and without air conditioning.

Photo: Pierre-Luc Auclair
Internet: www.smrt.com.sg

Taxi



Flexible and easy - there are a great many taxis in Singapore which all use taximeters. Taxis are cheap even if there is a surcharge at night time

and for driving through certain areas during rush-hour traffic. There are a few large taxi companies of which Comfort is the largest.

City Cab
+65 6552 2222

Comfort
+65 6552 1111

SMRT
+65 6555 8888

Transcab
+65 6555 3333

Premier Taxis
+65 6363 6888

SMART
+65 6485 7777

Photo: Taxi
Internet: www.taxisingapore.com

Post Office



Singapore Post has 1,300 offices spread across the island. These offer all postal services and telecommunications.

General opening hours are Monday to Friday 8.30-17.00 and Saturdays 8.30-13.00.

Singapore Post (main office):

Photo: Andy Fuchs
Address: 10 Eunos Road 8, Singapore
Phone: +65 6741 8857

Pharmacy



There are pharmacies in most supermarkets, department stores, hotels and shopping centres and they are usually open from 9.00-18.00. Many

hotels have their own 24-hour doctors, while other doctors are listed under Medical Practitioners in the Yellow Pages.

Photo: Gemma Garner

Telephone



Country code: +65

Photo: Jardson Almeida

Electricity



220 - 240 volts, AC 50

Photo: Stirling Tschan

Population

5.7 million (2020)

Currency

Singapore dollar (SGD or S\$)

Opening hours

Most shops in the city are open from 10.00 until 20.00 or 21.00 every day of the week.

Newspapers

The Straits Times – www.straitstimes.com

The New Paper

The Business Times – www.businesstimes.com.sg

Emergency numbers

Police: 999

Emergency/Ambulance/Fire Brigade: 995

Tourist information

Singapore Visitors Centre,

216 Orchard Road (Next to orchardgateway@emerald)

Daily 10.00 to 19:00

Chinatown Visitor Centre

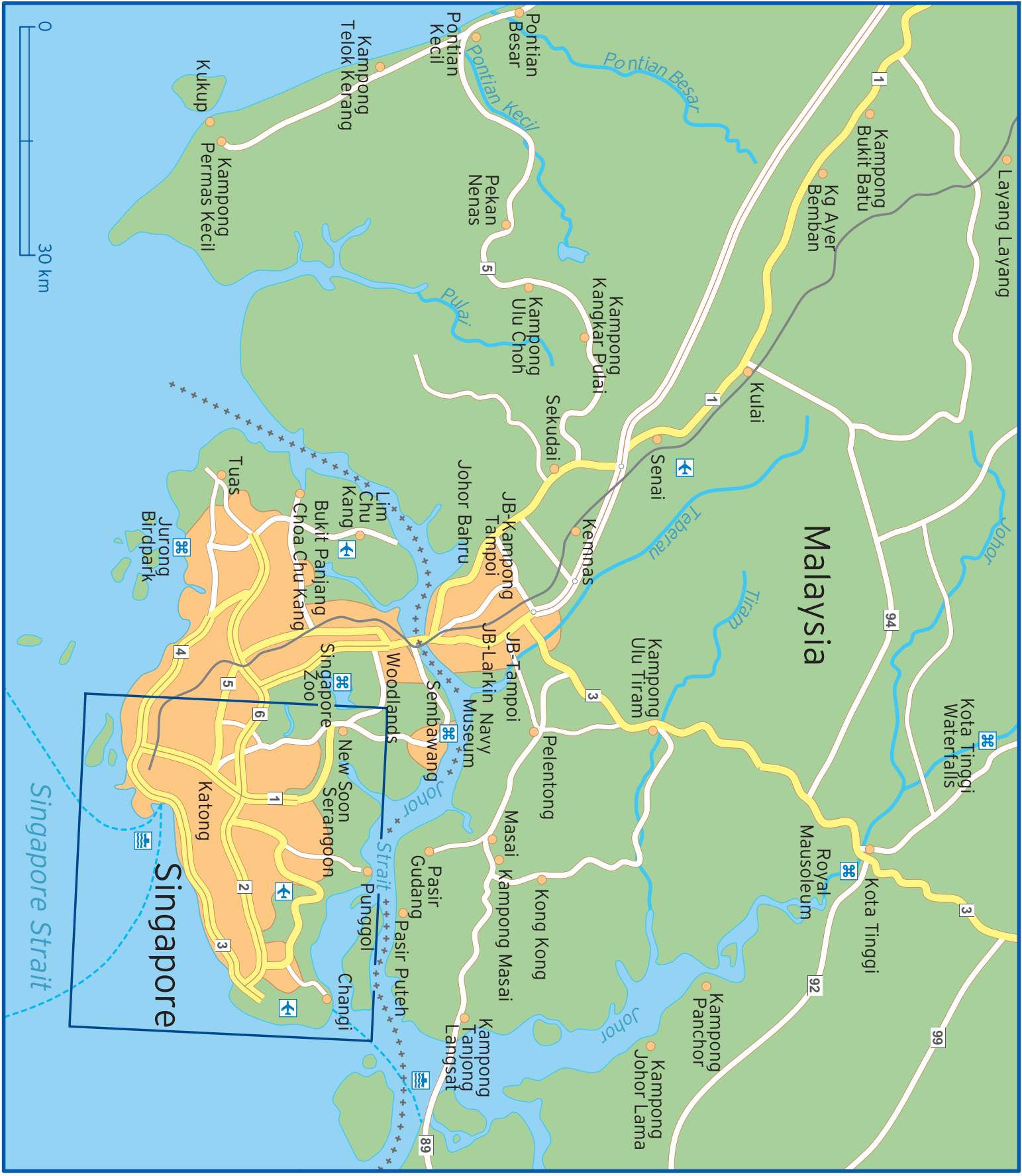
2 Banda Street (Behind Buddha Tooth Relic Temple and Museum)

Daily 10.00 to 19:00

Tourist Hotline

Toll-free in Singapore: 1800 736 2000

From Overseas: +65 6736 2000



Malaysia

Singapore

Singapore Strait

0 30 km

Layang Layang

Kampung Bukit Batu
Kg Ayer Bemban

Royal Mausoleum

Kota Tinggi

Kota Tinggi Waterfalls

Kampung Panchor

Kampung Johor Lama

Kampung Tanjong Langsat

Pasir Gudang

Pasir Gudang

Sembawang

Woodlands

Singapore Zoo

Bukit Panjang

Choa Chu kang

Lim Chu Kang

Jurong Birdpark

Kampung Permas Kecil
Kukup

Telok Kerang

Pontian Kecil

Pontian Besar

Pekan Nenas

Kampung Ulu Choh

Kampung Kangkar Pulai

Sekudai

Tiram

Kampung Ulu Tiram

Kemnas

Senai

Johor Bahru

JB-Tampoi

JB-Larkin

JB-Tampoi

Pelentong

Masai

Kampung Masai

Kong Kong

Pasir Puteh

Punggol

Changi

Serangoon

New Soon

Katong

Museum

Navy

JB-Larkin

JB-Tampoi

Johor Bahru

JB-Tampoi

Kemnas

Senai

Kampung Ulu Choh

Kampung Kangkar Pulai

Pekan Nenas

Pontian Besar

Pontian Kecil

Pontian Besar

Telok Kerang

Kukup

Kampung Permas Kecil

Kampung Bukit Batu

Kg Ayer Bemban

Layang Layang

Kota Tinggi

Kota Tinggi Waterfalls

Kampung Panchor

Kampung Johor Lama

Kampung Tanjong Langsat

Pasir Puteh

Punggol

Changi

Serangoon

New Soon

Katong

Museum

Navy

JB-Larkin

JB-Tampoi

JB-Tampoi

Johor Bahru

Senai

Kemnas

Kampung Ulu Choh

Kampung Kangkar Pulai

Pekan Nenas

Pontian Besar

Pontian Kecil

Telok Kerang

Kukup

Kampung Permas Kecil

Kampung Bukit Batu

Kg Ayer Bemban

Layang Layang

Kota Tinggi

Kota Tinggi Waterfalls

Kampung Panchor

Kampung Johor Lama

Kampung Tanjong Langsat

Pasir Puteh

Punggol

Changi

Serangoon

New Soon

Katong

Museum

Navy

JB-Larkin

JB-Tampoi

JB-Tampoi

Johor Bahru

Senai

Kemnas

Kampung Ulu Choh

Kampung Kangkar Pulai

Pekan Nenas

Pontian Besar

Pontian Kecil

Telok Kerang

Kukup

Kampung Permas Kecil

Kampung Bukit Batu

Kg Ayer Bemban

Layang Layang

Kota Tinggi

Kota Tinggi Waterfalls

Kampung Panchor

Kampung Johor Lama

Kampung Tanjong Langsat

Pasir Puteh

Punggol

Changi

Serangoon

New Soon

Katong

Museum

Navy

JB-Larkin

JB-Tampoi

JB-Tampoi

Johor Bahru

Senai

Kemnas

Kampung Ulu Choh

Kampung Kangkar Pulai

Pekan Nenas

Pontian Besar

Pontian Kecil

Telok Kerang

Kukup

Kampung Permas Kecil

Kampung Bukit Batu

Kg Ayer Bemban

Layang Layang

Kota Tinggi

Kota Tinggi Waterfalls

Kampung Panchor

Kampung Johor Lama

Kampung Tanjong Langsat

Pasir Puteh

Punggol

Changi

Serangoon

New Soon

Katong

Museum

Navy

JB-Larkin

JB-Tampoi

JB-Tampoi

Johor Bahru

Senai

Kemnas

Kampung Ulu Choh

Kampung Kangkar Pulai

Pekan Nenas

Pontian Besar

Pontian Kecil

Telok Kerang

Kukup

Kampung Permas Kecil

Kampung Bukit Batu

Kg Ayer Bemban

Layang Layang

Kota Tinggi

Kota Tinggi Waterfalls

Kampung Panchor

Kampung Johor Lama

Kampung Tanjong Langsat

Pasir Puteh

Punggol

Changi

Serangoon

New Soon

Katong

Museum

Navy

JB-Larkin

JB-Tampoi

JB-Tampoi

Johor Bahru

Senai

Kemnas

Kampung Ulu Choh

Kampung Kangkar Pulai

Pekan Nenas

Pontian Besar

Pontian Kecil

Telok Kerang

Kukup

Kampung Permas Kecil

Kampung Bukit Batu

Kg Ayer Bemban

Layang Layang

Kota Tinggi

Kota Tinggi Waterfalls

Kampung Panchor

Kampung Johor Lama

Kampung Tanjong Langsat

Pasir Puteh

Punggol

Changi

Serangoon

New Soon

Katong

Museum

Navy

JB-Larkin

JB-Tampoi

JB-Tampoi

Johor Bahru

Senai

Kemnas

Kampung Ulu Choh

Kampung Kangkar Pulai

Pekan Nenas

Pontian Besar

Pontian Kecil

Telok Kerang

Kukup

Kampung Permas Kecil

Kampung Bukit Batu

Kg Ayer Bemban

Layang Layang

Kota Tinggi

Kota Tinggi Waterfalls

Kampung Panchor

Kampung Johor Lama

Kampung Tanjong Langsat

Pasir Puteh

Punggol

Changi

Serangoon

New Soon

Katong

Museum

Navy

JB-Larkin

JB-Tampoi

JB-Tampoi

Johor Bahru

Senai

Kemnas

Kampung Ulu Choh

Kampung Kangkar Pulai

Pekan Nenas

Pontian Besar

Pontian Kecil

Telok Kerang

Kukup

Kampung Permas Kecil

Kampung Bukit Batu

Kg Ayer Bemban

Layang Layang

Kota Tinggi

Kota Tinggi Waterfalls

Kampung Panchor

Kampung Johor Lama

Kampung Tanjong Langsat

Pasir Puteh

Punggol

Changi

Serangoon

New Soon

Katong

Museum

Navy

JB-Larkin

JB-Tampoi

JB-Tampoi

Johor Bahru

Senai

Kemnas

Kampung Ulu Choh

Kampung Kangkar Pulai

Pekan Nenas

Pontian Besar

Pontian Kecil

Telok Kerang

Kukup

Kampung Permas Kecil

Kampung Bukit Batu

Kg Ayer Bemban

Layang Layang

Kota Tinggi

Kota Tinggi Waterfalls

Kampung Panchor

Kampung Johor Lama

Kampung Tanjong Langsat

Pasir Puteh

Punggol

Changi

Serangoon

New Soon

Katong

Museum

Navy

JB-Larkin

JB-Tampoi

JB-Tampoi

Johor Bahru

Senai

Kemnas



Pulau Ubin

Serangoon Harbour

Changi

Johore Battery

Pasir Ris

Singapore Changi Airport

Tampines

Bedok Reservoir

Singapore International Airport

Bedok

Katong

East Coast Park

Punggol

Yio Chu Kang

Ang Mo Kio

Thomson Village

Lower Pierce Reservoir

MacRitchie Reservoir

Hougang

Bishan

Siong Lim Sian Si Temple

Toa Payoh

Geylang

Singapore

Queenstown

China Town

Downtown

Tiong Bahru

Kappel Harbour

Underwater World

Butterfly Park

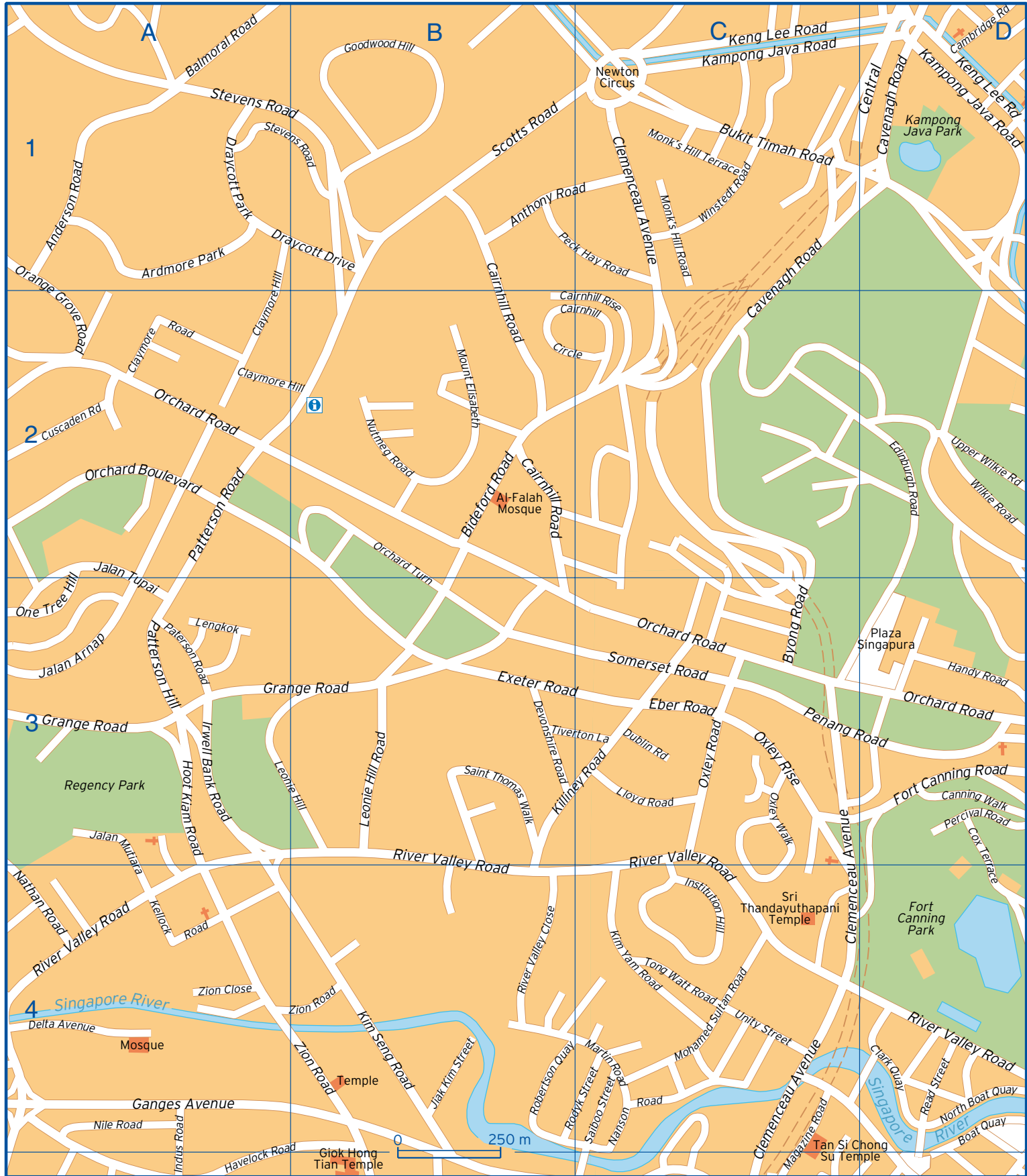
Maritime Museum

Sentosa

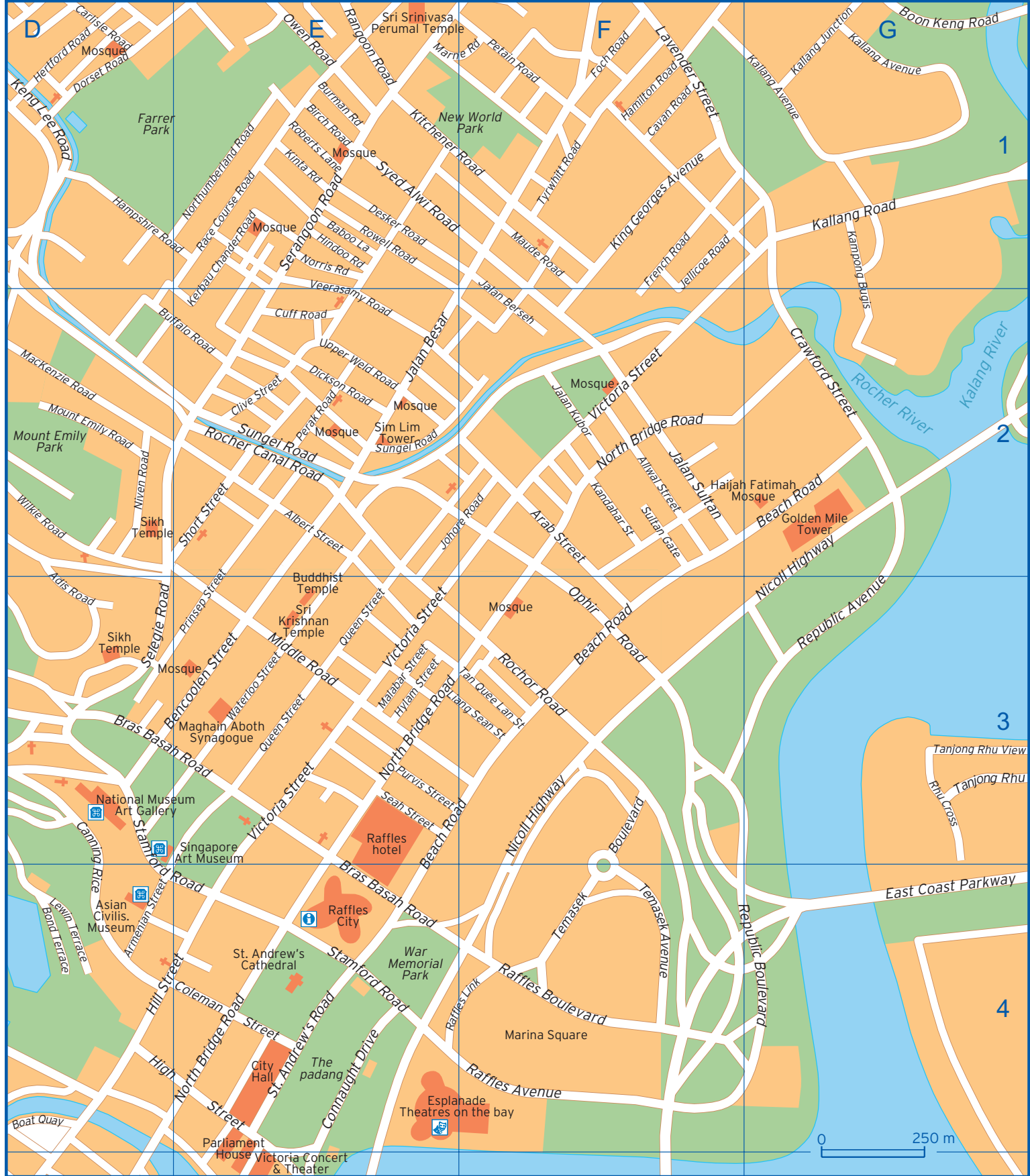
Straits of Singapore

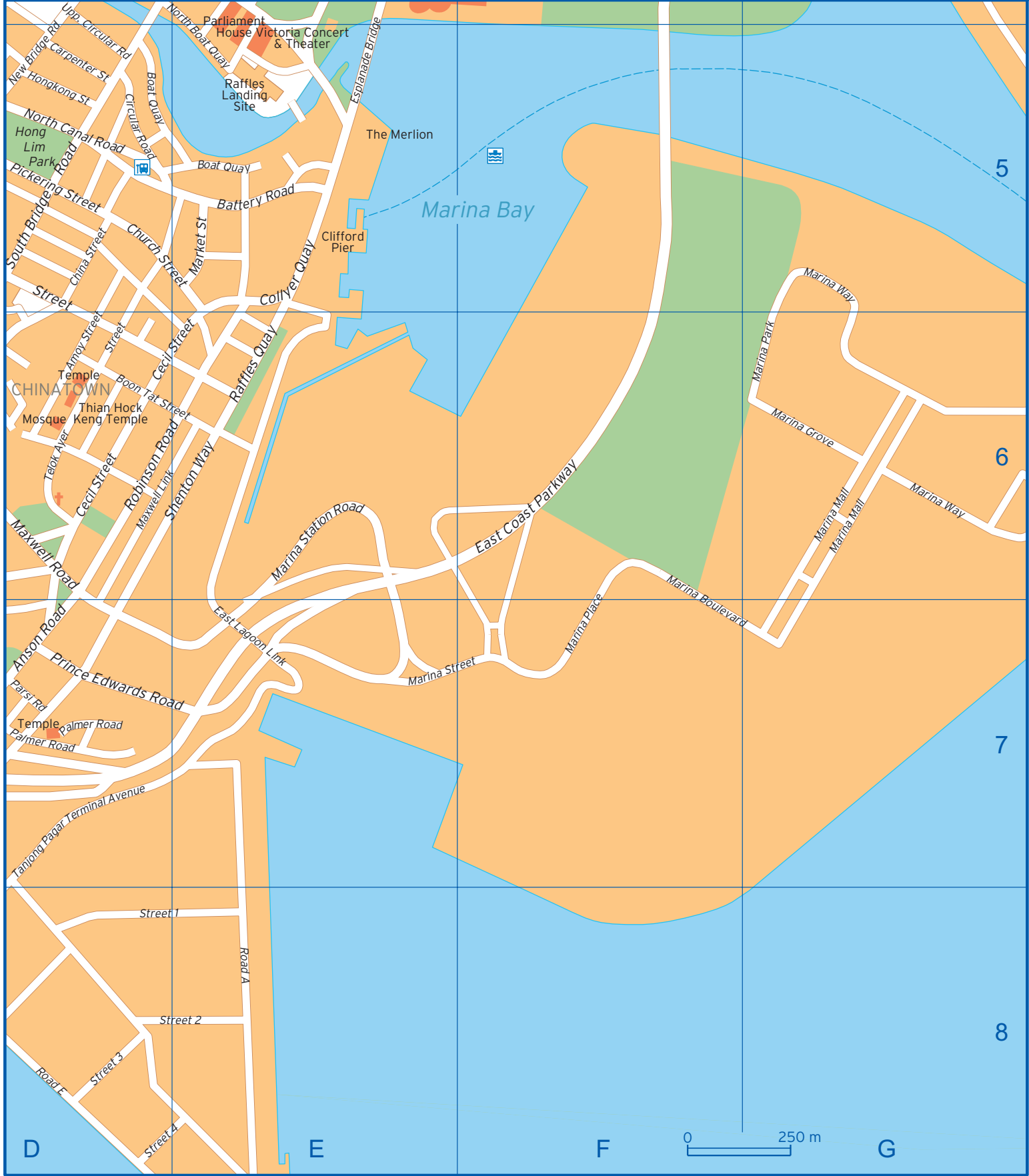
South China Sea











Adis Road	D2 D3	Central Expressway	A6 B6 C5 C7	Hertford Road	D1
Albert Street	E2	China Street	D5	High Street	D4
Allwal Street	F2	Church Street	D5 E5	Hill Street	D4 E4
Amoy Street	D6	Circular Road	D5	Hindoo Road	E1
Anderson Road	A1	Clark Quay	D4	Hoe Chiang Road	C7
Ann Siang Club Street	D6	Claymore Hill	A1 A2 B2	Hongkong Street	D5
Anson Road	D7	Claymore Road	A2	Hoot Kiam Road	A3
Anthony Road	B1 C1	Clemenceau Avenue	C1 C3 C4 C5	Hospital Drive	B6
Arab Street	F2	Clive Street	E2	Hylam Street	E3
Armenian Street	D4	Coleman Street	D4 E4	Indus Road	A4 A5
Asia Gardens	C6 C7	College Road	B6	Institution Hill	C4
Ayer-Rajah	A7	Collyer Quay	E5	Irwell Bank Road	A3
Baboo Lane	E1	Connaught Drive	E4	Jalan	A6
Balmoral Road	A1	Cox Terrace	D3 D4	Jalan Arnap	A3
Battery Road	E5	Craig Road	C6	Jalan Berseh	F1 F2
Beach Road	E4 F3 G2	Crawford Street	G2	Jalan Besar	E2
Bencoolen Street	D3 E3	Cross Street	D5	Jalan Kubor	F2
Beo Cres	A5	Cuff Road	E2	Jalan Membina	A5 A6
Bernam Street	D7	Cuscaden Road	A2	Jalan Minyak	C5
Bideford Road	B2	Delta Avenue	A4	Jalan Mutiara	A3 A4
Birch Road	E1	Desker Road	E1	Jalan Sultan	F2
Boat Quay	D4 D5 E5	Devonshire Road	B3	Jalan Tupai	A2 A3
Bond Terrace	D4	Dickson Road	E2	Jellicoe Road	F1 F2
Boon Keng Road	G1	Dorset Road	D1	Jiak Kim Street	B4
Boon Tat Street	D6 E6	Draycott Drive	A1 B1	Johore Road	E2 F2
Boon Tiong Road	A5	Draycott Park	A1	Kallang Avenue	G1
Bras Basah Road	D3 E3 E4	Dublin Road	C3	Kallang Junction	G1
Buffalo Road	D2 E2	Duxton Road	C6 D6	Kallang Road	G1
Bukit Ho Swee	A5 B5	East Coast Parkway	F6 G4	Kampong Bahru Road	A7 A8
Bukit Merah	A6 B6	East Lagoon Link	E7	Kampong Bugis	G1 G2
Bukit Purmei Road	A7	Eber Road	C3	Kampong Java Road	C1 D1
Bukit Teresa Road	A7	Edinburgh Road	D2	Kandahar Street	F2
Bukit Timah Road	C1	Eng Hoon Street	B5	Kee Seng Street	C7
Burman Road	E1	Eng Watt Street	B5	Kellock Road	A4
Byong Road	C3	Enggor Street	D7	Keng Lee Road	C1 D1
Cairnhill Circle	B2 C2	Esplanade Bridge	E4 E5	Keong Saik	C6
Cairnhill Rise	B2 C2	Everton Park	C6	Keppel Terminal Avenue	A8 C8 D8
Cairnhill Road	B1 B2	Exeter Road	B3 C3	Kerbau Chander Road	E1 E2
Cambridge Road	D1	First Hospital Avenue	C6	Killiney Road	B3 C3
Canning Rice	D3 D4	Foch Road	F1	Kim Pong Road	A5
Canning Walk	D3	Fort Canning Road	D3	Kim Seng Road	B4
Cantonment Link	C7	French Road	F1	Kim Tian Road	A6
Cantonment Road	C6	Ganges Avenue	A4	Kim Yam Road	C4
Carlisle Road	D1	Goodwood Hill	B1	King Georges Avenue	F1
Carpenter Street	D5	Grange Road	A3 B3	Kinta Road	E1
Cavan Road	F1	Hamilton Road	F1	Kitchener Road	E1 F1
Cavenagh Road	C1 C2 D1	Hampshire Road	D1 E1	Kreta Ayer Road	C6
Cecil Street	D6 E6	Handy Road	D3	Lavender Street	F1
Central	D1	Havelock Road	A5 B4 B5 C5 D5	Lengkok	A3

Leonie Hill	A3 B3	Orchard Boulevard	A2	Robertson Quay	B4
Leonie Hill Road	B3	Orchard Road	A2 C3 D3	Robinson Road	D6 E6
Lewin Terrace	D4	Orchard Turn	B2 B3	Rocher Canal Road	E2
Liang Sean Street	E3 F3	Outram Park	C5 C6	Rochor Road	F3
Lim Siak Street	A5 B5	Outram Road	B5 B6 C6	Rodyk Street	B4 C4
Lim Teck Kim Road	C7 D7	Owen Road	E1	Rowell Road	E1
Lloyd Road	C3	Oxley Rise	C3	Saiboo Street	C4
MacAlister Road	B6	Oxley Road	C3	Saint Thomas Walk	B3
MacKenzie Road	D2	Oxley Walk	C3	Scotts Road	B1
Magazine Road	C4 C5	Pagoda Street	D5	Seah Street	E3
Malabar Street	E3	Palmer Road	D7	Second Hospital Avenue	B6 C6
Marina Boulevard	F6 G7	Park Cres	C5	Selegie Road	D3
Marina Grove	G6	Parsi Road	D7	Seng Poh Lane	B5
Marina Mall	G6	Paterson Hill	A3	Seng Poh Road	A5 B5
Marina Park	G6	Patterson Road	A2 A3	Serangoon Road	E1
Marina Place	F6 F7	Pearl's Hill Terrace	C5	Shenton Way	D6 E6
Marina Station Road	E6	Peck Hay Road	B1 C1	Short Street	E2
Marina Street	E7 F7	Peck Seah Street	D6	Smith Street	C5 D6
Marina Way	G5 G6	Penang Road	C3 D3	Somerset Road	C3
Market Street	E5	Perak Road	E2	South Bridge Road	D5
Marne Road	E1 F1	Percival Road	D3	Spooner Road	A7 B7
Martin Road	C4	Petain Road	F1	Spottiswoode Park Road	B7 C7
Maude Road	F1	Pickering Street	D5	St. Andrew's Road	E4
Maxwell Link	D6 E6	Prince Edwards Road	D7 E7	Stamford Road	D3 E4
Maxwell Road	D6	Prinsep Street	E2 E3	Stevens Road	A1 B1
Merchant Road	D5	Purvis Street	E3	Street 1	D8 E8
Middle Road	E3	Queen Street	E3	Street 2	D8 E8
Mohamed Sultan Road	C4	Race Course Road	E1	Street 3	D8
Monk's Hill Road	C1	Raeburn Park	B7	Street 4	D8 E8
Monk's Hill Terrace	C1	Raffles Avenue	F4	Street 5	C8 D8
Mosque Street	D5	Raffles Boulevard	F4	Street 6	B8
Mount Elisabeth	B2	Raffles Link	E4 F4	Street 7	B8
Mount Emily Road	D2	Raffles Quay	E6	Sultan Gate	F2
Nanson Road	C4	Rangoon Road	E1	Sungei Road	E2
Nathan Road	A4	Read Street	D4	Syed Alwi Road	E1
Neil Road	C6	Republic Avenue	G3	Tan Quee Lan Street	E3 F3
New Bridge Road	C6 D5	Republic Boulevard	F4 G4	Tanjong Pagar	C7
Nicoll Highway	F3 G2 G3	Rhu Cross	G3	Tanjong Pagar Road	D6
Nile Road	A4	River Valley Close	B4	Tanjong Pagar Terminal Avenue	D7 D8
Niven Road	D2	River Valley Road	A4 B3 B4 C4 D4	Tanjong Rhu	G3
Norris Road	E1	Road A	E8	Tanjong Rhu View	G3
North Boat Quay	D4 E5	Road E	D8	Telok Ayer Street	D6
North Bridge Road	E3 E4 F2	Road F	D8	Temasek Avenue	F4
North Canal Road	D5	Road G	D8	Temasek Boulevard	F4
Northumberland Road	E1	Road H	D8	Temple Street	C5 D5
Nutmeg Road	B2	Road K	C8	Third Hospital Avenue	B6
One Tree Hill	A2 A3	Road M	B8	Tiong Bahru Road	A5
Ophir Road	F3	Road N	A8	Tiong Poh Avenue	A6
Orange Grove Road	A1 A2	Roberts Lane	E1	Tiverton Lane	B3 C3

Tong Watt Road	C4	Upper Hokien Street	D5	Wilkie Road	D2
Tras Street	D6 D7	Upper Weld Road	E2	Winstedt Road	C1
Trengganu Street	D5 D6	Upper Wilkie Road	D2	Yong Siak Street	A5 A6
Tyrwhitt Road	F1	Veerasamy Road	E1 E2	York Hill	B5 C5
Unity Street	C4	Victoria Street	E3 F2	Zion Close	A4
Upper Circular Road	D4 D5	Wallich Street	D6	Zion Road	A4 B4 B5
Upper Cross Street	C5 D5	Waterloo Street	E3		