



Big Island, Hawaii

Photo: Madeline Onassis/unsplash



Alexandra Tran/unsplash

The Island of Hawaii is known colloquially as the Big Island — a fitting nickname for an island twice the combined size of its neighboring counterparts! Big Island flaunts its colors like the plumes of a peacock: fierce reds of magma from Hawaii Volcanoes National Park contrast spectacularly with the bright white snow of Maunakea, while the electric black sands of Punaluu Beach stream into the emerald green of the Hamakua Coast’s rainforests.





Peter Luo/unsplash





Cedric Letsch/unsplash


Featured

- 

Puukohola Heiau National H...
Puukohola Heiau is a stunning stone structure visible from the road. Located...
- 


Kau Scenic Byway — The Slo...
The Kau Scenic Byway is a 54-mile loop of ancient Hawaiian history. Enjoy th...
- 


Keauhou
Visitors are never short of activities in Keauhou. Just south of the Histori...
- 


Historic Kailua Village (K...
Historic Kailua Village (Kailua-Kona) is a vivacious seaside town in the hea...
- 


Hawaii Tropical Botanical ...
This beautiful garden showcases some Hawaii’s rich variety of plant life, wi...


Top 5

- 

Hawaii Volcanoes National Park
You have the unique opportunity to watch one of nature's most
- 

Punaluu Black Sand Beach
Hawaii's black sands draw much of the attention for its beaches. Drawing its...
- 

Two Step Snorkeling
Perfect for the beginner, Two Steps, a colloquial name for Honaunau Bay, is ...
- 

Mamalaho Kona Heritage Co...
Mamalaho Kona Heritage Corridor was named in honor of Kamehameha the Great'...
- 

Royal Footsteps Along the ...
The Royal Footsteps Along the Kona Coast Byway covers 700 years of history. ...



THE ISLAND



Radoslaw Lecyk/Shutterstock.com

While Hawaii Island may be the youngest island in the archipelago, it retains its prominence as the first island to be touched by man. Coming in the form of Polynesian voyagers from the Marquesas Islands 1,500 years ago, they would become the first Hawaiians. Native Hawaiian temple ruins, royal grounds, fish ponds, sacred burial spots, and petroglyphs all remain as evidence of this early culture. And Puuhonua o Honaunau National Historic Park also retains many areas and items of historical significance.

Throughout Hawaii's era of discovery, Hawaii Island was divided among chiefdoms, leading to frequent skirmishes and contention between the factions. It was during this time that the last major religious "heiau" temple was built. In constructing a tribute to the war god Kukailimoku, King Kamehameha I hoped to bolster his efforts in uniting the Hawaiian Islands. He would go on to conquer the island and indeed unite the Kingdom. The temple is now the Puukohola Heiau National Historic Site in North Kohala, and there are also statues and dedications to the Great King Kamehameha around Hawaii Island.

Over the next centuries, Hawaii Island would be influenced by the influx of missionaries, along with a roaring sugar industry. Today's Big Island

continues as a cornerstone for the Hawaiian Islands' beauty, culture, and eternal elegance.

DO & SEE



Maridav/Shutterstock.com

The Big Island is not only the largest island in Hawaii, it also has an active volcano to amaze visitors with an unparalleled view of the Earth in action. It is only one of the many natural and historical sites that enthrall visitors to the island annually.

Hawaii Volcanoes National Park



You have the unique opportunity to watch one of nature's most powerful, beautiful processes as the earth unfurls to release its

magma from the volcanoes. As one of the most active volcanoes on the planet, Kilauea volcano is consistently one of Big Island's biggest attractions. Its reputation precedes it as a sacred place for Native Hawaiians as well.

Marvel at the active Mauna Loa, learn about volcanology at the Jaggar Museum, take a selfie at the viewpoint overlooking the Halema'uma'u Crater. The long, underground cave formed by ancient flowing lava called the Thurston Lava Tube (Nāhuku) is another must-see.

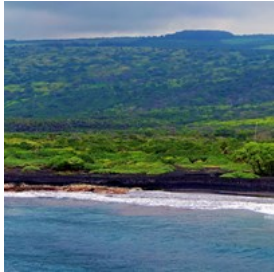
Photo: pingnews.com/public domain/Flickr

Address: Hawaii Volcanoes National Park, Island of Hawaii

Phone: +1 808 985 6000

Internet: www.nps.gov/havo/index.htm

Punaluu Black Sand Beach



Hawaii's black sands draw much of the attention for its beaches. Drawing its color from the volcanic activity, the Punaluu Black Sand

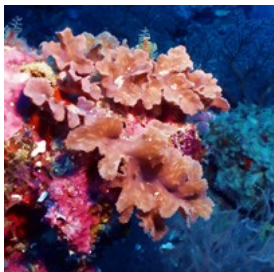
Beach on southeastern Kau's coast is stunning. Hawaiian Green Sea turtles will bask in the sun beside you (please do not disturb them, however, as they are endangered and protected).

Photo: Les Williams/Flickr(image cropped)

Address: Highway 11, Island of Hawaii

Internet: www.gohawaii.com/islands/hawaii-big-island/regions/kau/punaluu-black-sand-beach

Two Step Snorkeling



Perfect for the beginner, Two Steps, a colloquial name for Honaunau Bay, is the marquee location for a jumping off point.

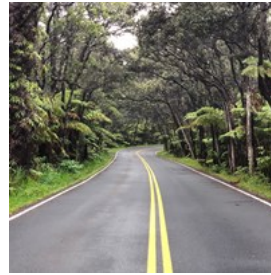
There are plenty of sightseeing opportunities while exploring the sea, with corals, varied topography, and an abundance of ocean life.

Photo: Neville Wootton/cc by 2.0/Flickr(image cropped)

Address: Honaunau Bay, Island of Hawaii

Internet: www.tropicalsnorkeling.com/snorkeling-two-steps

Mamalaho Kona Heritage Corridor



Mamalaho Kona Heritage Corridor was named in honor of Kamehameha the Great's "Law of the Splintered Paddle." The storied

footpath granted runners safe passage for centuries, and today the 10-mile Mamalahoa (paddle) Kona Heritage Corridor survives with stories of Hawaii's past and present. The immigrant influences of Europe, Asia and the Americas are still evident in the historic architecture, shrines, coffee farms, art galleries and Holualoa Village.

Photo: Famartin/cc by-sa 4.0/wikimedia(image cropped)

Address: Holualoa, Island of Hawaii

More Info: This historic road is located along Route 180, Old Mamalahoa Highway, between Palani Junction and Honalo Junction

Royal Footsteps Along the Kona Coast



The Royal Footsteps Along the Kona Coast Byway covers 700 years of history. The seven-mile stretch of road takes you through the centuries of

Hawaii's Alii, or the ruling class. You will be led past four of Kona's seven "Royal Centers," which were the sacred locations chosen due to an abundance of natural resources and recreational value. These centers were reserved for the kings and queens of Hawaii. Count among them Hulihee Palace (one of three palaces in the United States), the royal surfing grounds of Kahaluu, Hawaii's oldest Christian church and several heiau, or sites of sacred Hawaiian temples.

Photo: Danyelle Lopez/unsplash

Address: Alii Drive, Island of Hawaii

Kau Scenic Byway — The Slopes of Mauna Loa



The Kau Scenic Byway is a 54-mile loop of ancient Hawaiian history. Enjoy the wealth of natural wonders and the southernmost point of the

United States. Long stretches of pristine, unrequited scenery make for exceptional experiences along this byway. Stop at the Honuapo Overlook, and indulge in one of Hawaii's most remarkable views. The byway takes you to Punaluu Black Sand Beach, the 1000-year-old cave system of Kula Kai Caverns and gives you majestic vistas of Hawaii's lava fields.

Photo: M. Patrick/USGS/public domain/wikimedia(image cropped)

Internet: www.visittheusa.com/experience/amazing-stops-along-hawaiis-kau-scenic-byway

Akaka Falls State Park



Akaka Falls State Park is nestled along the northeastern Hamakua Coast. The two mellifluous waterfalls are seen on only one short

hike. A pleasant half a mile trek will take you through a lush rainforest of wild orchids, bamboo groves and coquettish ferns. You'll pinch yourself to find this is all indeed real, especially with the 100-foot Kahuna Falls and the towering Akaka Falls, which plummets down 442 feet.

Photo: Famartin/cc by-sa 4.0/wikimedia(image cropped)

Address: Akaka Falls Road, Honoumuli, Island of Hawaii

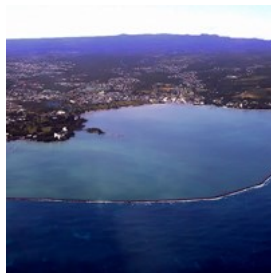
Opening hours: Daily 8am-5pm

Phone: +1 808 961 9540

Internet:

dlnr.hawaii.gov/dsp/parks/hawaii/akaka-falls-state-park

Hilo



Hilo is a region of Hawaii known for its dramatic waterfalls, fertile rainforests, blooming gardens and its geographic inverse of the

volcanic Kohala Coast. Hilo is also the gateway to Hawaii Volcanoes National Park, located 45 minutes south. You'll find plenty to do with a collection of renowned museums, art galleries, unique shops and everlasting favorites like the Hilo Farmers Market.

Photo: KanoaWithington/cc by-sa 3.0/Wikimedia (upscaled)(image cropped)

Internet:

www.gohawaii.com/islands/hawaii-big-island/regions/hilo

Historic Kailua Village (Kailua-Kona)



Historic Kailua Village (Kailua-Kona) is a vivacious seaside town in the heart of the sunny Kona Coast. When the sun sets, Kailua Village

puts forth a lively nightlife with live music, great local food and ocean vistas. During the day, find a variety of shops, cafes, historical sites, and more.

Photo: Falco Ermert/cc by 2.0/Flickr

Address: 75-5677 Alii Drive, Kailua-Kona, Island of Hawaii

Internet: historickailuavillage.com

Email: kailuavillage@gmail.com

More Info: 15 minutes south of Kona International Airport

Keauhou



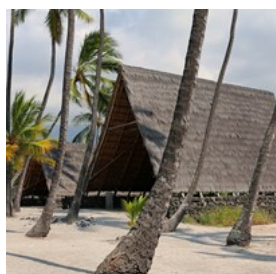
Visitors are never short of activities in Keauhou. Just south of the Historic Kailua Village, the Keauhou area has become one of Hawaii's

most frequented destinations. The waters are perfect for snorkeling, scuba diving and kayaking. Enjoy a combination of golf courses, spas and fine resort restaurants on land. Spot manta rays at night as they meander near the shores to feed on microscopic plankton, and you may even see napping honu (Hawaiian green sea turtles) in the shallow tide pools as well.

Photo: Dana L. Brown/cc by-sa 2.0/Flickr

More Info: Immediately south of Historic Kailua Village. You can also see the community's name spelled as Keauhoa or Keauhua

Pu'uhonua o Honaunau National Historical Park



A centerpiece of Hawaiian culture, Puuhonua o Honaunau is a 180-acre national historic park that once served home to royal

grounds and a sanctuary for ancient Hawaiian lawbreakers. Back in the day, those who broke kapu (or sacred law) were given one chance of redemption: evade pursuers and arrive to a puuhonua, or a sacred places of refuge. If successful, there would have been a ceremony of absolution, and the law-breaker would return to society.

Photo: Bob Linsdell/cc by 3.0/wikimedia(image cropped)

Address: State Highway 160, Honaunau, Island of Hawaii

Opening hours: Daily 8:30am-4:30pm

Phone: +1 808 328 2326

Internet: www.nps.gov/puho/index.htm

Waimea



Quirky and fun, Waimea immediately shows its sense of humor with stop signs that read "Whoa," instead of "Stop."

Waimea is known as

paniolo (Hawaiian cowboy) country, with rolling, green pastures that still serve home to cattle, cowboys and ranches. The community also features some of Hawaii Island's finest chefs and endless entertainment with the Kahilu Theatre.

Photo: Bonus Onus/cc by-sa 3.0/wikimedia(image cropped)

More Info: Located south of Pu'u O Umi Natural Area Reserve. Don't confuse Waimea with Waimea Bay — the latter is a historic seaport town on the west coast of Big Island.

Hamakua Heritage Corridor



The Hamakua Heritage Corridor takes you on a scenic day trip along the Hamakua Coast. Drive 45 miles along sea cliffs, through lush valleys and

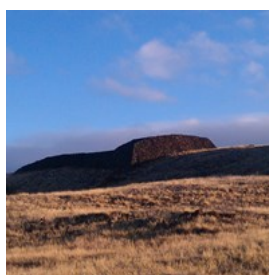
tropical rainforests with ample opportunities to explore old plantation towns, see amazing waterfalls and take scenic detours.

Photo: Madeline Onassis/unsplash

Internet: www.gohawaii.com/islands/hawaii-big-island/regions/hamakua-coast/hamakua-heritage-corridor

More Info: The iconic Waipio Valley Lookout is a popular stop on the Hamakua Heritage Corridor

Puukohola Heiau National Historic Site



Puukohola Heiau is a stunning stone structure visible from the road.

Located north of Kohala Coast's resorts, the National Historic Site is

home to one of the largest restored heiau (temples) in Hawaii. Heiau were sacred places of worship for Native Hawaiians, and Puukohola Heiau itself was built to fulfill a historic prophecy.

Photo: Angel Schatz/cc by 2.0/Flickr(image cropped)
Address: 62-3601 Kawaihae Road, Kawaihae, Island of Hawaii
Opening hours: Daily 7:30am-4:45pm
Internet: www.nps.gov/puhe/index.htm

Pololu Valley Lookout



Experience remarkable views of verdant cliffs and the dramatic northeastern coastline.

There are horses grazing on the hillside, outcroppings in the waters offshore and the black sand beach. You may opt to hike down to the valley floor and the black sand beach, although swimming is ill-advised due to strong currents.

Photo: Terry Ott/cc by 2.0/Flickr
Address: 52-5100 Akoni Pule Highway, Kapaau, Island of Hawaii
Internet: www.gohawaii.com/islands/hawaii-big-island/regions/kohala/pololu-valley-lookout
More Info: The Pololu Valley Lookout is at the end of Highway 270.

Anaehoomalu Beach



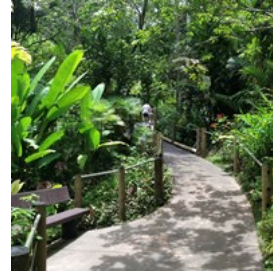
This thin strip of white-sand beach is flanked by the Anaehoomalu Bay on one side and two ancient Hawaiian fishponds,

Kuualii and Kahapapa, on the other. Located near the Waikoloa Marriott, it is a favorite spot for swimming, windsurfing, snorkeling and other

water activities.

Photo: Michael Olsen/unsplash
Address: 69-275 Waikoloa Beach Drive Waikoloa, Island of Hawaii

Hawaii Tropical Botanical Garden



This beautiful garden showcases some Hawaii's rich variety of plant life, with a great selection of orchids as the standout feature. A walk through the garden takes visitors down to the shoreline and back up again, providing some great views of the ocean.

Photo: AlaskaDave/cc by-sa 3.0/wikimedia(image cropped)
Address: 27-717 Old Mamalahoa Highway, Papaikou, Island of Hawaii
Opening hours: Daily 9am-5pm
Phone: +1 808 964 5233
Internet: htbg.com
Email: htbg@ilhawaii.net

Hulihee Palace



One of only three royal palaces in the entire United States, this former residence dates back to 1838, and once served as King David Kalakaua's

summer palace. The elegant gardens, the vintage koa furniture, the Hawaiian quilts, and the whole of the decor are a page out of Hawaiian history.

Photo: Ken Lund/cc by-sa 2.0/Flickr
Address: 75-5718 Alii Drive, Kailua-Kona, Island of Hawaii
Opening hours: Wed-Fri by reservation only, Sat: 10am-3:30pm, Sun-Tue closed
Phone: +1 808 329 1877
Internet: daughtersofhawaii.org/hulihee-palace
Email: sunshine@daughtersofhawaii.org

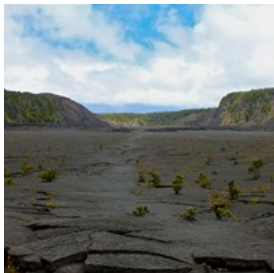
Imiloa Astronomy Center



This observatory, museum and educational and cultural center is dedicated to the study of the stars and the galaxy, as well as the cultural and historical importance of nearby Mauna Kea. It features interactive exhibits, shows and events.

Photo: brewbooks/cc by-sa 2.0/Flickr (cropped)(image cropped)
Address: 600 Imiloa Place, Hilo, Island of Hawaii
Opening hours: Thu-Sun 9am-4:30pm, Mon-Wed closed
Phone: +1 808 932 8901
Internet: imiloahawaii.org
Email: imloa.info@hawaii.edu

Kilauea Iki Trail



This hiking trail can be a bit challenging, but adventurers will be rewarded with a unique experience. A descent through lush rain forest leads to a valley of a solid, yet still steaming lava lake. The scenery of the Kilauea Iki Crater is barren and desolate, but eerily beautiful.

Photo: Navin Rajagopalan/cc by-sa 2.0/wikimedia(image cropped)
Address: Crater Rim Drive Hawaii Volcanoes National Park, Island of Hawaii
Internet: www.nps.gov/havo/planyourvisit/hike_day_kilaueaiki.htm
More Info: The last eruption here happened in 1959

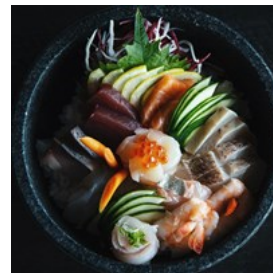
DINING



Santorines/Shutterstock.com

Big Island restaurants include small family friendly seafood spots and exquisite fine dining. No matter where you go, you will be greeted by the welcoming island attitude and delicious food you will find nowhere else on the planet.

CanoeHouse (Waimea)



Enjoy casual oceanside dining at the CanoeHouse, which boasts front row seats to enjoy the spectacular sunsets over the Kohala

Coast. The menu features Japanese-inspired dishes crafted mindfully with diverse ingredients. Humpback whales can be spotted off shore from November to April.

Photo: Jesse Ballantyne/unsplash
Address: Mauna Lani, Auberge Resorts Collection, 68-1400 Mauna Lani Drive Waimea, Island of Hawaii
Opening hours: Daily 5pm-9pm
Internet: aubergeresorts.com/maunalani/dining

Honu's on the Beach Restaurant (Kailua-Kona)

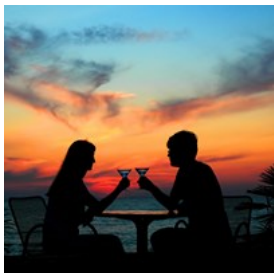


Honu's on the Beach Restaurant was designated as the "Favorite Hotel Restaurant — Neighbor Island" by the Honolulu

Advertiser in 2000 and 2001. The result of great food and a friendly atmosphere, their wins were also due to the unbeatable views of Kamakahonu Bay and the Pacific.

Photo: Maxim Krayushkin/cc by 2.0/Flickr(image cropped)
Address: 75-5660 Palani Road Kailua-Kona, Island of Hawaii
Opening hours: Daily 6am-10:30am / 5:30pm-10pm
Phone: +1 808 331 6388
Internet: www.instagram.com/honusonthebeach

Brown's Beach House Restaurant (Waimea)



The award-winning Brown's Beach House is under the helm of Chef TK Theosavang, who spotlights the best of island-inspired

ingredients with fresh seafood. Located steps from the shore, the elegant beachfront restaurant has won the prestigious Hale Aina Award for "Top Big Island Restaurant" by readers of Honolulu magazine. Nightly entertainment from Nino plays island memories on Hawaiian slack key while you dine.

Photo: Polushkin Ivan/Shutterstock.com
Address: 1 North Kaniku Drive Waimea, Island of Hawaii
Opening hours: Daily 5:30pm-8:30pm
Phone: +1 808 887 7368
Internet: www.fairmont.com/orchid-hawaii/dining/browns-beach-house

WSW – Whiskey Steak Wine (Hilo)



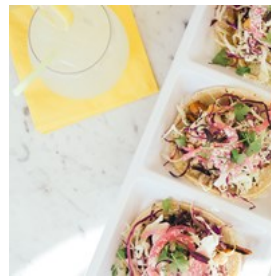
The Whiskey Steak Wine floor-to-ceiling windows allow stunning views of Hilo Bay, Coconut Island and Mauna Kea

Mountain. All of the beef is Prime Grade or Premium Certified Black Angus Grade, and the selection of seafood is outstanding. The centerpiece of the dining room

is an impressive walk-around wine and whisky display cellar.

Photo: Davide Cantelli/Unsplash.com
Address: Hilo Hawaiian Hotel, 71 Banyan Drive Hilo, Island of Hawaii
Phone: +1 808 969 6470
Internet: www.wswsteakhouse.com

Don The Beachcomber (Kailua-Kona)

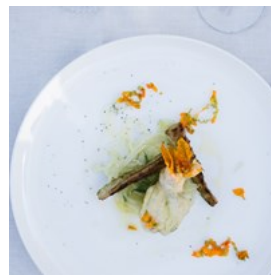


Don the Beachcomber is an open-air tiki bar and restaurant at the Royal Kona Resort. The prime setting on the water's edge allows for views of

Pacific sunsets. The menu can be described as Pacific Fusion: Prime Rib and seafood specialties, and the culinary team prepare entrées in the Exhibition Show Kitchen.

Photo: Ingrid Hofsta/Unsplash.com
Address: 75-5852 Alii Drive Kailua-Kona, Island of Hawaii
Phone: +1 808 329 3111
Internet: www.royalkona.com/dining

Merriman's (Waimea)



When you mention the name "Merriman" on any of the Hawaiian islands, great food instantly comes to mind. Come experience the acclaimed

cuisine by Chef Merriman himself, which features authentic Hawaiian cuisine and contemporary renditions.

Photo: Ingrid Hofstra/Unsplash.com
Address: 65-1227 Opelo Road Kamuela Waimea, Island of Hawaii
Opening hours: Dinner: daily 5pm-8:30pm. Lunch: Wed-Sat 11am-2pm. Brunch: Sun 10:30am-1pm
Phone: +1 808 885 6822
Internet: www.merrimanshawaii.com/waimea

Beach Tree (Kailua-Kona)



The Beach Tree offers unparalleled dining at the Four Seasons Resort. Enjoy culinary delights inspired by dishes from around the world that

have been given an island twist. Their pizza and pasta are particularly good. Sample one of 60 wines available by the glass, carafe, or bottle or one of many unique island-inspired cocktails.

Photo: Paras Kapoor/unsplash

Address: 72-100 Ka'upulehu Drive Kailua-Kona, Island of Hawaii

Opening hours: Daily 11am-10pm

Phone: +1 808 325 8000

Internet: www.fourseasons.com/hualalai/dining/lounges/beach_tree_bar_and_lounge

COFFEE & LUNCH



Kite_rin/Shutterstock.com

100% pure Kona coffee is a rare commodity exclusively grown in north and south Kona. The high elevation, constant cloud coverage and rich volcanic soil from Hualalai Volcano in the upland slopes of Kona create an ideal coffee experience to cherish. As such, there are several coffee shops that are run by local roasters, as well as bakeries selling delights you will only find on the island.

Hawaiian Style Cafe (Waimea)



The Hawaiian Style Cafe offers a Hawaiian breakfast menu in a diner atmosphere. Their banana macadamia nut pancakes are particularly

popular with the guests. You can also enjoy a variety of lunch options, served as a regular or mini portion. Check out their website for daily specials.

Photo: nikld/Unsplash.com

Address: 65-1290 Kawaihae Road Waimea, Island of Hawaii

Opening hours: Mon-Sat 7am-1:30pm, Sun 7am-noon

Phone: +1 808 885 4295

Internet: hawaiianstylecafe.us

More Info: Hawaiian Style Cafe has a second location in Hilo

Ka'ū Coffee Mill (Pahala)



Although Ka'ū Coffee Mill is a little off the beaten track, it has won the Hawaii Coffee Associations Certificate of Excellence for its coffee.

You will be able to reach it if you travel towards the southernmost part of the Big Island. Ka'ū Coffee Mill offers coffee samples as well as farm and coffee tours.

Photo: Nathan Dumlao/Unsplash.com

Address: 96-2694 Wood Valley Road Pahala, Island of Hawaii

Opening hours: Daily 9am-4pm

Phone: +1 808 928 0550

Internet: kaucoffeemill.com

Gramma's Kitchen (Honokaa)



Gramma's Kitchen is a family owned business that offers an all day breakfast menu and Portuguese inspired dishes. They are known

for their fast and friendly service and fresh food. Stop by for a meal on your way to the Waipio lookout.

Photo: Charissee Kenion/Unsplash.com

Address: 45-3625 Mamane Street Honokaa, Island of Hawaii

Opening hours: Wed-Fri 11am-3pm, Sat & Sun 10am-3pm, Mon & Tue closed

Phone: +1 808 775 9943

Internet: www.grammaskitchenhi.com

Kona Coffee Cafe (Kailua-Kona)



Enjoy a fresh brewed cup and browse the shop for something to share with friends and family afterwards. Try the Lilikoi Bars, Portugese Sweet

Bread French Toast, Berry Scones and Macadamia Tarts.

Photo: margouillat photo/Shutterstock.com

Address: 75-5744 Alii Drive Kailua-Kona, Island of Hawaii

Opening hours: Daily 7am-7pm

Phone: +1 808 329 7131

Punalu'u Bake Shop (Naalehu)



The Punalu'u Bake Shop is the Southernmost bakery in the United States. They're home to the world-famous Punalu'u Sweetbread and

serve great sandwiches, malasadas, ice cream, and more. Pick up some edible and collectible gifts on your way out.

Photo: Dean Drobot/Shutterstock.com

Address: 95-5642 Mamalahoa Highway Naalehu, Island of Hawaii

Opening hours: Mon-Fri 8:30am-4:30pm, Sat & Sun 8:30am-5pm

Phone: +1 866 366 3501

Internet: www.bakeshophawaii.com

Number 3 (Kohala Coast)



Located at the Mauna Kea Golf Course Clubhouse, Number 3 offers guests casual lunch and libations. Refreshing fruit cocktails and

smoothies, the grass-fed burger and classic crab Louis are favorites.

Photo: Nick Clement/Unsplash.com

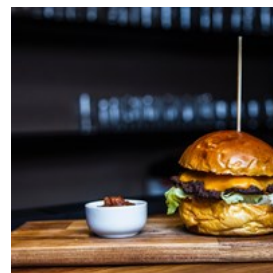
Address: 62-100 Mauna Kea Beach Drive Kohala Coast, Island of Hawaii

Opening hours: Daily 11:30am-2:30pm

Phone: +1 808 882 5707

Internet: www.maunakearesort.com/dine/casual/number-3

Lagoon Grill (Waikoloa Village)



Come to Lagoon Grill and watch their resident dolphins frolic below as you dine on your choice of burgers, hot dogs, salads, sandwiches, and

tropical fruits. Be sure to try one of their famous smoothies or one of the refreshing tropical cocktails.

Photo: Bobby Rodriguez/Unsplash.com

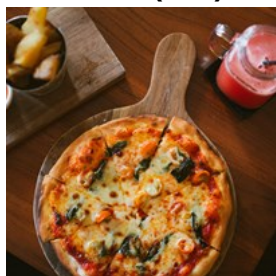
Address: 69-425 Waikoloa Beach Drive Waikoloa Village, Island of Hawaii

Opening hours: Daily 11am-5pm

Phone: +1 808 886 1234

Internet: www.hilton.com/en/hotels/koahwhh-hilton-waikoloa-village/dining/lagoon-grill

Cafe Pesto (Hilo)



Cafe Pesto features fresh, local seafood, exotic pizzas, eclectic salads, and Asian inspired pastas and risottos.

Complimentary Wi-Fi is available for all guests.

Photo: Hannah Sorrell Creative/Shutterstock.com

Address: 308 Kamehameha Avenue Hilo, Island of Hawaii

Opening hours: Daily 11am-8:30pm

Phone: +1 808 969 6640

Internet: www.cafepesto.com

BARS & NIGHTLIFE



DisobeyArt/Shutterstock.com

Big Island has a sleepier, more laid-back vibe than other Hawaiian islands, but that doesn't mean that the nightlife is dead. The resorts host night-time activities and events to keep guests busy, and a handful of bustling bars can be found around the island. Art is also alive and vibrant in small playhouses and movie theaters, some of which screen indie and foreign films, and there is always live music somewhere. And of course, the local specialty is the luau, a chance for visitors to experience the music and dances of the island, accompanied by fine food and finer company.

On the Rocks (Kona)



With both dinner and Happy Hour, On the Rocks beckons you to come relax after a day of exploration. Chill out in the cocktail lounge with handcrafted beverages and fine wine. Their Pupu menu is served at the bar.

Photo: Hybrid Storytellers/unsplash

Address: 75-5824 Kahakai Road, Kailua-Kona, Island of Hawaii

Opening hours: Daily noon-9pm

Internet: huggosontherocks.com

More Info: Daily Happy Hour 3pm-5pm. Live music nightly from 5pm

Cronies Bar and Grill (Hilo)



A favorite among local sports fans, Cronie's is the perfect place to have a burger and a beer while watching the big game.

The bar gets pretty packed at night, so be ready to deal with a crowd.

Photo: zeljkodan/Shutterstock.com

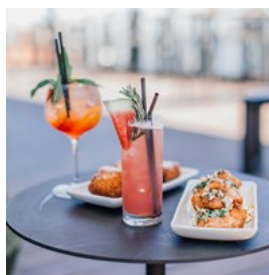
Address: 11 Waianuenue Avenue Hilo, Island of Hawaii

Opening hours: Mon & Wed-Sat 11am-8pm; Tue 11am-3pm; Sun 8am-8pm

Phone: +1 808 935 5158

Internet: www.instagram.com/croniesbarandgrill

Hawaii Calls Restaurant (Waikoloa)



Hawaii Calls, also known as Clipper Lounge, invites you to partake in poolside tropical drinks during lunch hour, or Aloha Hour for special offers on

drinks and platters. There are other specials running throughout the week, so check the

website for details.

Photo: Rachel Claire/pexels

Address: 69-275 Waikoloa Beach Drive, Waikoloa Beach,
Island of Hawaii

Opening hours: Daily 7am-9pm

Phone: +1 808 886 8111

Internet: www.marriott.com/en-us/hotels/koamc-waikoloa-beach-marriott-resort-and-spa/dining/hawaii-calls-restaurant-lounge

More Info: Daily happy Hour 2pm-4pm

Uncle Robert's Awa Bar & Farmers Market (Kalapana)



This compound, long-time property of the Keli'ih'o'omalua family, has become a hotspot for locals to shop, eat, drink, dance and socialize,

making it a great place for visitors to experience local culture. Every Wednesday there is a night market where farmers, artists and entertainers gather to enjoy, among other things, the weekly live music.

Photo: W & J/cc by-sa 2.0/Flickr(image cropped)

Address: 12-5038 Kalapana Kapoho Beach Road, Pāhoa,
Island of Hawaii

Opening hours: Mon, Tue, Thu, Sat & Sun 7:30am-7:30pm;

Wed 7:30am-10pm, Fri closed

Phone: +1 808 987 7247

Internet: sites.google.com/site/unclesawaclub

Island Breeze Luau (Kailua-Kona)



Unlike so many shows geared toward tourists, Island Breeze Luau is more a genuine art performance by true artists who showcase the

dancing traditions of Hawaii, Samoa, Tahiti and New Zealand. The setting is magnificent, and the food is authentic and delicious.

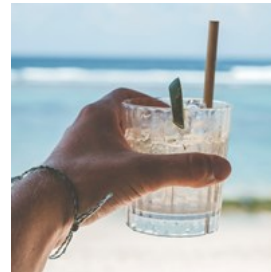
Photo: Deborah Kolb/Shutterstock.com

Address: 75-5660 Palani Road Kailua-Kona, Island of Hawaii

Phone: +1 808 326 4969

Internet: www.eventsbyislandbreeze.com/island-breeze-luau

Beach Tree Bar (Kailua-Kona)



The picturesque Beach Tree Bar and Lounge is located at the Four Seasons Hualalai. Enjoy cocktails beneath the sunset while sitting

beachside. Local favorites for fare include the warm artichoke and crab dip, tomato and basil bruschetta, and the rainbow sushi rolls.

Photo: Philipp Kämmerer/unsplash

Address: 72-100 Kaupulehu Drive, Kailua-Kona

Opening hours: Daily 11am-10pm

Phone: +1 808 325 8000

Internet: www.fourseasons.com/hualalai/dining/lounges/beach_tree_bar_and_lounge

Kahilu Theatre (Waimea)



This modest theatre hosts a variety of concerts and performances, from classical music and traditional ukulele concerts, to theatre,

dance and conferences. Check their website for upcoming events and enjoy some of the Big Island's top performance culture.

Photo: aerogondo2/Shutterstock.com

Address: Parker Ranch Center, 67-1186 Lindsey Road,
Waimea, Island of Hawaii

Phone: +1 808 885 6868

Internet: kahilutheatre.org

Aloha Theatre (Kealahou)



This lively little community theatre hosts plays, concerts and even independent film nights. Another great place to catch a show by a local cast and crew and enjoy another side of Hawaii's performance art scene.

Photo: Mark/cc by 2.0/Flickr(image cropped)

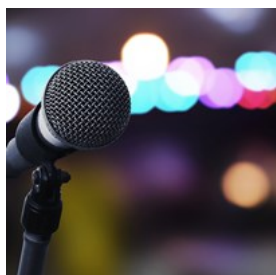
Address: 79-7384 Hawaii Belt Road, Kealahou, Island of Hawaii

Phone: +1 808 322 9924

Internet: apachawaii.org

Email: info@alohatheatre.com

Sam's Hideaway (Kailua-Kona)



Locals flock to the dark and seedy little bar that is Sam's for two main reasons: karaoke and the lack of tourists. It is a great, understated place to have a drink and a good time and to have a moment on stage, while rubbing elbows with locals and foregoing the tourist-trap feeling of much of the island's nightlife.

Photo: khuruzero/Shutterstock.com

Address: 75-5725 Alii Drive, Kailua-Kona, Island of Hawaii

Opening hours: Daily noon-2am

Phone: +1 808 326 7267

Honokaa People's Theatre (Honokaa)



For a taste of cinema on Big Island pay a visit to this historic building from 1930, where you can catch a movie or one of the frequent special events hosted there. The theatre is very much in tune with the arts scene on the island, and it is a

good place to find out about local happenings to be on the lookout for.

Photo: wavebreakmedia/Shutterstock.com

Address: 45-3574 Mamane Street, Honokaa, Island of Hawaii

Phone: +1 808 775 0000

Mask-Querade Bar (Kailua-Kona)



The location in a strip mall is nothing special, but behind the doors of the Mask-Querade Bar is the island's best gay bar, providing a change of pace from the island's usual sports bars. Most nights host special parties or events, like drag shows or barbecues on Sundays.

Photo: Mike Flippo/Shutterstock.com

Address: Kopiko Plaza, 75-5660 Kopiko Street, Kailua-Kona, Island of Hawaii

Opening hours: Daily 1pm-1am

Phone: +1 808 329 8558

Don's Mai Tai Bar (Kailua-Kona)



Visitors to Don's never fail to comment on the wonderful sunsets that can be admired from this outdoor bar, but the 10 varieties of mai tai also attract the crowds (be sure not to miss Don's Mai Tai festival in August). On Sundays there is live music on the xylophone, as well.

Photo: The Nix Company/unsplash

Address: 75-5852 Alii Drive Royal Kona Resort, Kailua-Kona, Island of Hawaii

Opening hours: Daily 6:30am-10am / 11am-10pm

Phone: +1 808 930 3286

Internet: www.royalkona.com/dining

Blue Dragon Tavern & Cosmic Musiquarium



Blue Dragon Tavern & Cosmic Musiquarium was given the titles of "Best Live Music and Best Night Life" in 2009 as well as "Best Dining

Atmosphere," "Best Family Entertainment," and "Best Bartender" in 2010 by readers of North Hawaii News. Outdoor dining, live music, dancing and delicious drinks await at the Blue Dragon.

Photo: Pamela Au/Shutterstock.com

Address: 61-3616 Kawaihae Road, Waimea, Island of Hawaii

Opening hours: Thu & Sun 5:30pm-9:30pm, Fri & Sat 5:30pm-10:30pm

Phone: +1 808 882 7771

Internet: www.bluedragontavern.com

Email: bluedragonmanager@gmail.com

Hilo Brewing Company (Hilo)



This friendly neighborhood brewery in Hilo doesn't require an appointment. Just show up at any time and get the chance to try free

samples of the different varieties available on tap while learning all about the brewery and the island from the warm and welcoming staff, and even take some local brews home with them.

Photo: Arina P Habich/Shutterstock.com

Address: 275 East Kawili Street, Hilo, Island of Hawaii

Opening hours: Tue-Sun noon-6pm, Mon closed

Phone: +1 808 934 8211

Internet: hilobrewingco.com

Kona Brewing Company (Kailua-Kona)



Beloved by locals, the Kona Brewing Company continues a tradition of brewing high-quality beer started in 1995 as Hawaii's largest craft

brewery. Order a sampler and try four different varieties, including Longboard Island Lager, Big Wave Golden Ale and Fire Rock Pale Ale. There is an outdoor patio with live music on Sundays, and there is a good selection of food from gourmet pizzas and sandwiches to fresh salads.

Photo: Erik Mclean/pexels

Address: 75-5629 Kuakini Highway Kailua-Kona, Island of Hawaii

Opening hours: Daily 10am-9pm

Phone: +1 808 334 2739

Internet: www.konabrewinghawaii.com/come-visit

Humpy's Big Island Alehouse (Kailua-Kona)



The beer lovers of Humpy's have a "no crap on tap" policy. All 36 beers on draught are fresh, handcrafted beers that can be enjoyed from

the patio seating on the ground floor or from up above. The patio views of the Kona coast at sunset are spectacular.

Photo: Arina P Habich/Shutterstock.com

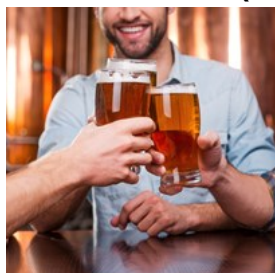
Address: 75-5815 Alii Drive Kailua-Kona, Island of Hawaii

Opening hours: Daily 7:30am-late

Phone: +1 808 324 2337

Internet: www.humpysalaska.com/kona

Hilo Town Tavern (Hilo)



The crowds at this popular dive bar regularly comprise college students and workers, locals and tourists, regulars and first-time visitor. The Tavern hosts live music most night, and also offers open mic nights, a pool table and game room, and a fresh open-air porch area.

Photo: g-stockstudio/Shutterstock.com

Address: 168 Keawe Street Hilo, Island of Hawaii

Opening hours: Daily 11:30am-midnight

Phone: +1 808 935 2171

Internet: www.hilotowntavern.com

SHOPPING



olly/Shutterstock.com

The numerous Big Island resorts all offer interesting shopping options, as do the villages and downtown Kona. Even the most touristy spots can be exciting, but, if you dig a little deeper, you can find some coveted local favorites and have a much more rewarding shopping experience. Especially appealing is the artwork and houseware made from local materials, such as lava rock and milo wood, which can be found in boutiques and galleries across the island.

Prince Kuhio Plaza (Hilo)



As Big Island's only enclosed shopping center, Prince Kuhio Plaza offers 85 retail shops and eateries, a stadium seating 9-screen theater and over 200 community events, promotions, and family entertainment programs each year. Find familiar national brands, as well as local Hawaiian names.

Photo: Rawpixel/Shutterstock.com

Address: 111 East Puainako Street, Hilo, Island of Hawaii

Opening hours: Mon-Wed 10am-7pm, Fri & Sat 10am-8pm, Sun 10am-7pm

Phone: +1 808 959 3555

Internet: www.princekuhioplaza.com

Just Ukes (Kailua-Kona)



Musicians (aspiring and established) can find fine handcrafted ukuleles to suit all needs, from budget starter options to professional models made from the finest woods. Of course, the store also carries all kinds of accessories, from books and cases to t-shirts and memorabilia.

Photo: PKpix/Shutterstock.com

Address: Kona Inn Shopping Village, 75-5744 Alii Drive, Kailua-Kona, Island of Hawaii

Opening hours: Daily 10am-7pm

Phone: +1 808 769 5101

Internet: justukes.com

Email: justukes2@yahoo.com

Keauhou Shopping Center (Kailua-Kona)



Keauhou Shopping Center is located in the birthplace and playground of Hawaii's great storied kings. Find stores for apparel,

jewelry, gifts, beauty and specialty items. There are also special entertainment and educational programs that teach about Kona's heritage.

Photo: Olly/Shutterstock.com

Address: 78-6831 Alii Drive, Kailua-Kona, Island of Hawaii

Opening hours: Daily 10am-6pm

Phone: +1 808 322 3000

Internet: www.keauhoushoppingcenter.com

Bentleys Home & Garden Collection (Waimea)



Locally owned and operated, Bentleys Home & Garden Collection offers gifts and souvenirs for all. Since the shops opening over 24 years

ago, Bentleys has become somewhat of a landmark business in upcountry Waimea Town, fitting into it's niche perfectly.

Photo: Oksana Shufrych/Shutterstock.com

Address: 65-1279 Kawaihae Road, Waimea, Island of Hawaii

Opening hours: Mon-Sat 10am-4:30pm, Sun 10am-3:30pm

Phone: +1 808 885 5565

Hilo Farmers Market (Hilo)



On Wednesdays and Saturdays the open-air Hilo Farmers Market bustles with over 200 vendors selling their products. Local

specialties, such as exotic flowers, tropical fruits and honey, are sold alongside market staples, like cheeses, fresh produce and freshly baked

pastries. The rest of the week a smaller market of about 30 vendors can be found.

Photo: Tupungato/Shutterstock.com

Address: Kamehameha Avenue & Mamo Street, Hilo, Island of Hawaii

Opening hours: Regular hours: daily 7am-3pm. Big Market: Wed & Sat

Phone: +1 808 933 1000

Parker Ranch Center (Waimea)



The Parker Ranch Center is anchored by the popular tourist attraction Parker Ranch Store and the historic Ikuu Purdy statue. The Center has

several Big Island product retailers, as well as the Fireside Food Court. Be sure to admire the 32 historic Paniolo murals depicting its cowboy heritage.

Photo: Tancha/Shutterstock.com

Address: 67-1185 Mamalahoa Highway, Kamuela, Island of Hawaii

Opening hours: Mon-Sat 9am-7pm, Sun 10am-5pm

Phone: +1 808 885 7178

More Info: The center has an excellent food court with Korean, Chinese, Thai and Japanese restaurants

Sig Zane Designs (Hilo)



Sig Zane Designs is dedicated to perpetuating Hawaiian culture through the art of Sig Zane himself. Each of the plant designs depicted on the

shirts and dresses are hand cut to honor the culturally significant plants and symbols of Hawaii.

Photo: CHAINFOTO24/Shutterstock.com

Address: 122 Kamehameha Avenue, Hilo, Island of Hawaii

Opening hours: Mon-Fri 10am-5pm, Sat 10am-4pm, Sun

closed

Phone: +1 808 935 7077

Internet: sigzanedesigns.com

Basically Books (Hilo)



Probably the best-located bookstore in Hawaii, facing the beautiful Hilo Bay, Basically Books carries a great selection of Hawaiian music and an

impressive array of maps. But books are the main focus at this family-owned independent store, and there is plenty of Hawaiian literature to choose from.

Photo: KN/Shutterstock.com

Address: 334 Kilauea Avenue, Hilo, Island of Hawaii

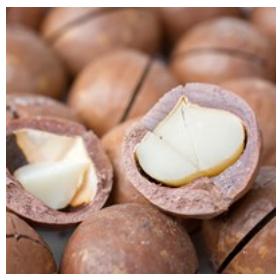
Opening hours: Mon-Sat 10am-5pm, Sun closed

Phone: +1 808 961 0144

Internet: www.basicallybooks.com

Email: bbinfo@hawaiiantel.net

Big Island Candies (Hilo)



Big Island Candies was established in 1977 to create the finest macadamia nut chocolates and cookies in the world. Today, they

are home to the famous diagonally dipped shortbread cookies, as well as an assortment of globally-acclaimed sweets that are all handmade with high-grade chocolate, island eggs and premium 100% Hawaii-grown macadamia nuts.

Photo: g215/Shutterstock.com

Address: 585 Hinano Street, Hilo, Island of Hawaii

Opening hours: Daily 8:30am-5pm

Phone: +1 808 935 8890

Internet: www.bigislandcandies.com

Ueshima Coffee Corp (Holualoa)



Ueshima Coffee Corp, also known as UCC, is located on the beautiful Kona Coffee farm overlooking Kailua Bay. They welcome guests to

observe a working Kona coffee roasting facility in one of their complimentary tours. You can also try your hand at roasting your own private label 100% Kona Coffee.

Photo: Gregory Hayes/unsplash

Address: 75-5568 Mamalahoa Highway, Holualoa, Island of Hawaii

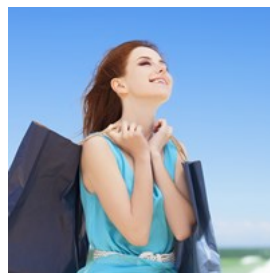
Opening hours: Daily 9am-4:30pm

Phone: +1 808 322 3789

Internet: www.ucc-hawaii.com

Email: info@ucc-hawaii.com

The Shops at Mauna Lani (Waimea)



The Shops at Mauna Lani is your resort destination shopping center located on the sunny Kohala Coast. Find a wealth of shopping, dining,

entertainment and cultural activity opportunities. You can even take a self-guided plant tour — just ask any retail merchant for a brochure.

Photo: Masson/Shutterstock.com

Address: 68-1330 Mauna Lani Drive, Waimea, Island of Hawaii

Opening hours: Daily 10am-9pm

Phone: +1 808 885 9501

Internet: www.shopsatmaunalani.com

Big Island Bees (Captain Cook)



Big Island Bees offers guests the opportunity to sample or purchase all existing varieties together with other beeswax and honey

products. Their honeys are distributed throughout Hawaii, and the quality has led to them being featured in national publications such as The New York Times and Food and Wine.

Photo: BillionPhotos/Shutterstock.com

Address: 82-5780 Napoopoo Road, Suite 102, Captain Cook, Island of Hawaii

Opening hours: Mon-Fri 10am-3pm

Phone: +1 808 328 1315

Internet: bigislandbees.com

Kona Wine Market (Kailua-Kona)



Although it boasts an impressive selection of over 600 varieties of wine, including imports from around the world as well as local vintages, the

Kona Wine Market also carries over 100 specialty craft beers — from Belgian ales to local micro brews — specialty liquors, and even gourmet foods and cigars.

Photo: Minerva Studio/Shutterstock.com

Address: 73-5613 Olowalu Street, Kailua-Kona, Island of Hawaii

Opening hours: Mon-Sat 10am-7pm, Sun 10am-6pm

Phone: +1 808 329 9400

Internet: www.konawinemarket.com

Hula Lamps of Hawaii (Kailua-Kona)



The unique bronze hula lamps on display at this shop are steeped in tradition and based on the vintage topless retro hula lamps of the 1930s,

and they surprise both with their variety and their quality. The novelty lamps have become highly sought after by visitors to the island in search of a unique memory or gift to take with them. They can also be mixed and matched with a selection of hand-painted lamp shades.

Photo: James H./cc by-sa 2.0/Flickr

Address: 73-5613 Olowalu Street, Kailua-Kona, Island of Hawaii

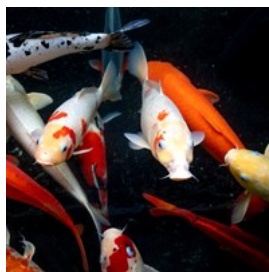
Opening hours: Mon-Fri 11am-5pm, Sat noon-4pm, Sun closed

Phone: +1 808 326 9583

Internet: hualalamps.com

Email: lamps@aloha.net

Queens' MarketPlace (Waikoloa Village)



Find an abundance of family entertainment with 28 acres of culture, shopping and restaurants at Queen's MarketPlace.

This resort-style mall offers anything from fancy to no-frills shopping, all in a pleasant setting with fountains, koi ponds and lush greenery.

Photo: Quang Nguyen Vinh/pexels

Address: 201 Waikoloa Beach Drive, Waikoloa Village, Island of Hawaii

Opening hours: Daily 10am-8pm

Phone: +1 808 886 8822

Internet: www.queensmarketplace.com

Kings' Shops (Waikoloa Village)



Kings' Shops is a premier shopping and dining destination, renowned for its luxurious and sophisticated ambiance and boutiques. Find an

exquisite collection of luxury stores and high-end boutiques.

Photo: Falco Ermert/cc by 2.0/Flickr

Address: 69-250 Waikoloa Beach Drive, Waikoloa Village, Island of Hawaii

Opening hours: Daily 10am-8pm

Phone: +1 808 886 8811

Internet: kingsshops.com

Mauna Loa Macadamia Nut Company (Keaau)



Mauna Loa Macadamia Nut Company offers tours of the facility. Afterward learning about nut farming and chocolate tempering techniques,

head to the gift shop and treat yourself to ice cream and free samples of nuts.

Photo: HandmadePictures/Shutterstock.com

Address: 16-701 Macadamia Road, Keaau, Island of Hawaii

Phone: +1 808 966 8618

Internet: www.maunaloa.com

Alii Gardens Marketplace (Kailua-Kona)



This market, open 6 days a week, feels almost like a lush park with some stalls hidden among its numerous trees. Visitors can pick up tropical

flowers and fresh produce, souvenirs and postcards, jewelry and clothing, arts and crafts, treats and much more. The outdoor garden cafe offers burgers, fish tacos, smoothies, shaved ice,

and any other refreshments you might need to enjoy the market.

Photo: Avatar_023/Shutterstock.com

Address: 75-6129 Alii Drive, Kailua-Kona, Island of Hawaii

Opening hours: Tue-Sun 9am-5pm, Mon closed

Phone: +1 808 937 8844

Kilauea Kreations (Volcano)



Colorful, tropical and beautifully patterned fabrics and quilts line the walls in this small shop, which also offers an array of local Hawaiian arts and

crafts, as well as unique photography, postcards and souvenirs. The owners also offer different courses, such as a quilt design and book making classes.

Photo: Hermes Rivera/unsplash

Address: 19-3972 Volcano Road, Volcano, Island of Hawaii

Opening hours: Sun 10am-2pm, Mon closed, Tue-Sat 10am-4pm

Phone: +1 808 967 8090

Internet: www.kilaueakreations.com

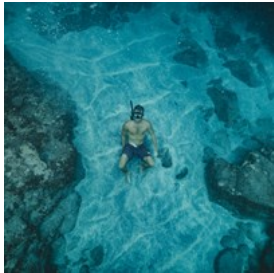
More Info: Kilauea Kreations has a second location in Hilo

TOURIST INFORMATION



Radoslaw Lecyk/Shutterstock.com

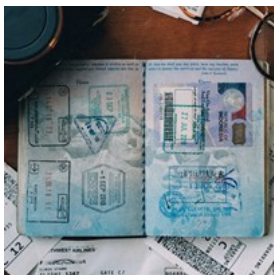
Best Time To Visit



The months from June to September are known for their warm weather and pleasant water temperatures. Rainfall is at its lowest during this time. If you are looking for more affordable flights and accommodation rates, you should visit Hawaii in September, October or November. Whale watching season also starts in November.

Photo: Jakob Owens/unsplash

Passport/Visa



Citizens of the Schengen countries, the United Kingdom, Ireland, Canada, Australia, New Zealand, Singapore, Japan, South Korea, Taiwan and the Kingdom of Brunei can visit the United States for up to 90 days without applying for a visa (as well as citizens of Andorra, Lichtenstein, Monaco and San Marino). Citizens of these countries must obtain an ESTA (Electronic System for Travel Authorization) before traveling. All other travelers must obtain a visa before visiting the United States. International travelers need a passport that is valid for at least 3 months after the end of their intended trip in order to enter the country.

Photo: ConvertKit/unsplash

Kona International Airport (KOA)



Kona International Airport (KOA) is the busier of the two airports on the Island of Hawaii. Located near the town of Kailua-Kona, the airport

serves western Hawaii island, including the resorts of the North Kona and South Kohala districts.

The airport is located seven miles from Kailua, and about 25 miles from Waikoloa. It is accessible by car, taxi and shuttle bus. The Hawaii County Mass Transit Agency Hele-On bus operates a very limited service between the airport and Kailua-Kona town.

Photo: dronepicr/cc by 2.0/wikimedia (cropped)(image cropped)

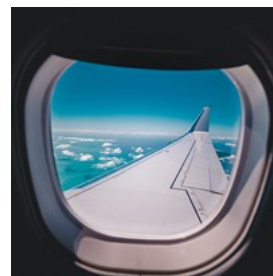
Address: 73-200 Kupipi Street Kailua-Kona, Island of Hawaii

Phone: +1 808 327 9520

Internet: airports.hawaii.gov/koa

More Info: The full name of the Airport is Ellison Onizuka Kona International Airport at Keāhole

Hilo International Airport (ITO)



Hilo International Airport (ITO) is one of two major airports on Hawaii Island. Most flights to the airport are from Honolulu International Airport.

Hilo International serves most of East Hawaii, including the districts of Hilo and Puna, as well as portions of the districts of Hāmākua and Kaʻū.

Hilo International Airport is accessible by car and taxi. Public transit, Hele-On Bus, is also offered by the Hawaii County.

Photo: Jakob Owens/unsplash

Address: 2450 Kekuanaoa Street, Hilo

Phone: +1 808 961 9300

Internet: airports.hawaii.gov/ito

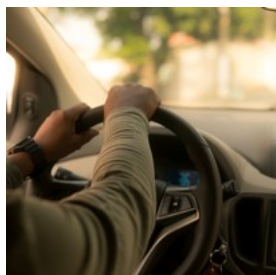
Public Transport



The Hawaii County Mass Transit Agency provides public transportation around Big Island on the Hele-On bus. Additionally, the Transit Agency offers a Shared Ride Taxi program which provides door-to-door transportation within the urbanized area of Hilo.

Photo: Hawaii County/cc by 2.0/Flickr(image cropped)
Internet: www.heleonbus.org

Taxi



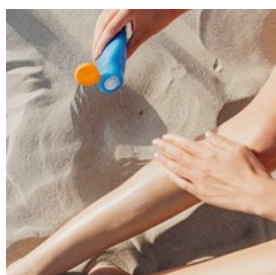
Uber and Lyft are available on the Big Island. Both companies have designated pick-up/drop-off areas in Kona and Hilo airports.

Most taxis on the island are in and around Kona. Flagging a car on the street can be difficult — try and order your ride by phone.

The following cab companies serve Big Island: Kona Taxicab LLC (+1 808 324 4444), Global Rider (+1 808 631 9196), Dakine Taxi (+1 808 329 4446).

Photo: Jackson David/unsplash
Internet: www.lovebigisland.com/getting-around

Pharmacy



Chain pharmacies — CVS Pharmacy, Safeway, Walmart, Costco, Longs etc. — as well as smaller neighborhood stores operate on the Big Island,

and while working hours may greatly vary, a few are open 24/7. Pharmacy signs are often in red and white, and they are often located inside department stores. Most of the pharmacies sell both prescription as well as over the counter medicine.

Photo: Karolina Grabowska/pexels
Address: Safeway Pharmacy, 75-971 Henry Street, Kailua-Kona
Opening hours: 24/7
Phone: +1 808 327 6778
Internet: local.safeway.com/safeway/hi/kailua-kona/75-971-henry-st.html

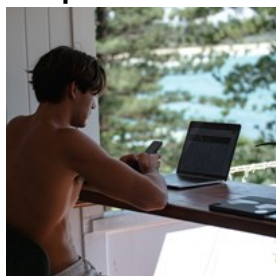
Post



Sending parcels and letters in the US is a relatively straightforward process. The most common method is through the United States Postal Service (USPS). The USPS offers a variety of services for sending mail, including First-Class Mail for letters and postcards, Priority Mail for packages, and Priority Mail Express for overnight delivery. To send a parcel or letter, you will need to take it to a USPS post office or use a USPS blue collection box. Use the USPS website to find the nearest post office or collection box to your location. Additionally, you can also use private couriers such as FedEx and UPS, which often provide a wider range of services and faster delivery times, but generally at a higher cost.

Photo: Nikolay Tchaouchev/unsplash
Address: US Postal Service, 74-5577 Palani Road Kailua-Kona, Island of Hawaii
Opening hours: Mon-Fri 9am-4pm, Sat 9am-1pm, Sun closed
Phone: +1 800 275 8777
Internet: www.usps.com

Telephone



Country code: +1 Area
code: 808

Photo: Mark Broadhead/unsplash

Electricity



All power sockets in the
United States provide a
standard voltage of
110-120V with a standard
frequency of 60Hz. Plug
type A has two flat
parallel pins.

Photo: ergonomofis/unsplash

Population

The Island of Hawaii: 200,629 (2020)

The State of Hawaii: 1.4 million (2021)

Currency

US Dollar, \$1 = 100 cents

Opening hours

Most stores are open daily from 9:30 am to 9 pm or later.

Most bars and clubs close around 2 am.

Internet

www.gohawaii.com

Newspapers

West Hawaii Today — www.westhawaii.com

Hawaii Tribune-Herald — www.hawaiitribune-herald.com

The Hawaii Independent (online) —

www.thehawaiiindependent.com

Emergency numbers

911

Tourist information

The Kona-Kohala Chamber of Commerce

75-5737 Kuakini Highway

www.kona-kohala.com

+1 808 329 1758