



Blue Mountains

in collaboration with Destination NSW for the Blue Mountains

Photo: Hamilton Lund/Destination NSW for the Blue Mountains



James Horan/Destination NSW for the Blue Mountains

The Blue Mountains get their name from the natural blue haze created by vast eucalypt forests in this World Heritage area. Tiny droplets of oil released from the trees mix with water vapour and sunlight to produce the distinctive colour. Enjoy crisp mountain air, beautiful panoramas, charming villages, one of the world's oldest cave systems, and exhilarating adventures in the Blue Mountains, near Sydney. You can even see dinosaur trees in the Blue Mountains Botanic Garden, Mount Tomah. This is a great Australian escape and a natural wonder of the world.



Lithgow and Oberon Tourism; David Hill/Destination NSW for the Blue Mountains



Hamilton Lund/Destination NSW for the Blue Mountains

Events



Blue Mountains Music Festival
Blue Mountains Music Festival of Folk, Blues and Roots is a three day festiv...



Blackheath Rhododendron Fe...
During the Annual Rhododendron Festival the Blackheath village comes alive

Top 5



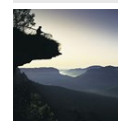
Three Sisters
The Three Sisters are a famous rock formation in the Blue Mountains. Offerin...



Scenic World
At Scenic World you choose how you take in the spectacular sites of the Thre...



Jenolan Caves
Regarded as Australia's most outstanding limestone caves, the Jenolan Caves ...



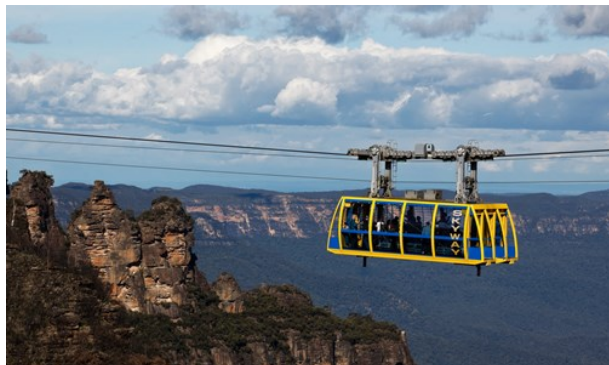
Govetts Leap Lookout
Govetts Leap Lookout is a popular spot to stop and view the spectacular pano...



Wentworth Falls
Within Blue Mountains National Park, five minutes from the highway, is one o...



TOP THINGS TO DO



James Horan/Destination NSW for the Blue Mountains

Breathtaking panoramas of giant ravines, sandstone plateaus, piercing pinnacles, vast forests and cascading waterfalls, and journeys into 340 million-year-old cathedral caves, are the amazing highlights of this World Heritage wilderness, near Sydney.

Three Sisters



The Three Sisters are a famous rock formation in the Blue Mountains.

Offering panoramic views into the Jamison Valley, these three rocky

pinnacles on the edge of the escarpment at Echo Point, Katoomba, have become an iconic symbol for the Blue Mountains. The Three Sisters can be viewed from the main Echo Point lookout or the Queen Elizabeth and Prince of Wales lookouts on the lower levels. A walk from behind the Echo Point Visitor Information Centre will lead you to the top of the Three Sisters via Honeymoon Bridge from the Giant Stairway.

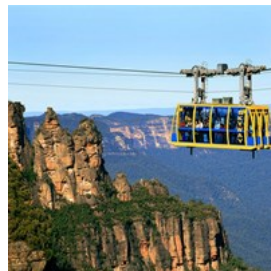
Photo: Office of Environment

Address: Echo Point, off Great Western Highway, Katoomba, NSW 2780

Opening hours: Accessible at all times, floodlit after 10.30pm.

Internet: www.visitnsw.com/destinations/blue-mountains/katoomba-area/katoomba/attractions/echo-point-lookout

Scenic World



At Scenic World you choose how you take in the spectacular sites of the Three Sisters, Katoomba Falls and Jamison Valley.

Impressive 360-degree views are the highlight of Scenic Skyway's glass-bottomed carriage.

Travelling 270 metres above ancient ravines, it's Australia's highest cable car. You can also ride on Scenic Railway, the steepest passenger railway in the world, and discover the thrill of a 52-degree incline. For a more gentle experience, descend into the valleys on Scenic Cableway to see nature at its most spectacular and then amble along the 2.4 km elevated Scenic Walkway through a towering Jurassic rainforest.

Unlimited rides on all four experiences are included in the one ticket price.

Photo: James Horan; Destination NSW

Address: Corner of Violet Stand Cliff Dr, Katoomba, NSW 2780

Opening hours: 9am - 5pm every day including public holidays.

Phone: +61 2 4780 0200

Internet: www.visitnsw.com/destinations/blue-mountains/katoomba-area/katoomba/attractions/scenic-world-blue-mountains

Jenolan Caves



Regarded as Australia's most outstanding limestone caves, the Jenolan Caves are among the oldest cave systems in the world. Some 340

million years old, the Jenolan Caves feature pure underground rivers and amazing limestone crystal formations. Whether a first timer or skilled adventurer, your experienced guide will take you to the depths of the Earth. For those

seeking a thrill, an adventure caving tour will see you squeeze, crawl and climb through winding ancient passageways with only your head lamp to light your way.

Photo: Jenolan Caves

Address: Jenolan Caves Rd, Jenolan Caves, NSW 2790

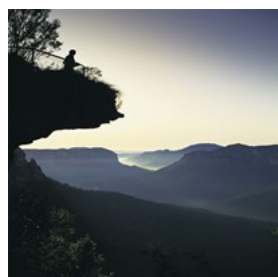
Opening hours: 9am-5pm daily including public holidays.

Additional tours operate during the school holidays, evenings Monday-Saturday and by appointment.

Phone: +61 2 6359 3923

Internet: www.visitnsw.com/destinations/blue-mountains/oberon-area/jenolan-caves

Govetts Leap Lookout



Govetts Leap Lookout is a popular spot to stop and view the spectacular panorama before descending into the Grose Valley. Here you'll find

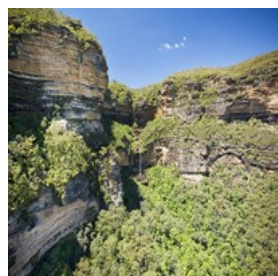
one of the region's more physical walks where you can view the towering cliffs leading back up to Perry Lookdown and Evans Lookout. At the top of the escarpment is a picnic ground, toilets and access to cliff top walks, including the Fairfax Heritage Track which is suitable for wheelchairs and prams.

Photo: Nick Rains; Destination NSW

Address: Govetts Leap Rd, Blackheath, NSW 2785

Internet: www.visitnsw.com/destinations/blue-mountains/katoomba-area/blackheath/attractions/govetts-leap-lookout

Wentworth Falls



Within Blue Mountains National Park, five minutes from the highway, is one of the most majestic waterfalls on the plateau. The falls occur where the Jamison Creek drops over the escarpment and plunges 297 metres over the

upper and lower falls into a large pool before flowing down the creek into the Valley of the Waters. Bushwalks in the area vary from short 10 minutes to full day walks in the valley.

National Parks and Wildlife Services produce a booklet with maps and information on the walks. Barbecue and picnic facilities are available and it is about two kilometres from Wentworth Falls train station.

Photo: Hamilton Lund; Destination NSW

Address: Falls Road, Wentworth Rd, NSW 2782

Opening hours: Accessible at all times, floodlit after 10:30pm.

Internet: www.visitnsw.com/destinations/blue-mountains/katoomba-area/wentworth-falls/attractions/wentworth-falls

EVENTS



Destination NSW for the Blue Mountains

Blue Mountains Music Festival



Blue Mountains Music Festival of Folk, Blues and Roots is a three day festival of folk, roots and blues music, featuring selected artists from around the world and across Australia. In a variety of venues in Katoomba, see and hear world class musicians in an intimate and relaxed atmosphere that has been raved about by both performers and audiences.

All weekend the site is alive with the sounds of

acoustic guitars, dobros, mandolins, fiddles, accordions, concertinas, bouzoukis, banjos, pianos, drums, percussion, flutes, pipes, whistles and voices. Food and craft stalls, the poet's brunch, children's entertainment and performance workshops fill out the on site atmosphere.

The festival precinct is a short stroll from Katoomba railway station and the buzzing strip of cafes, restaurants and shops that lead you down to the site.

Photo: Blue Mountains Music Festival

Address: Katoomba R.S.L, Lurline Street, Katoomba NSW 2780

Phone: +61 2 4782 6694

Internet: www.visitnsw.com/destinations/blue-mountains/katoomba-area/katoomba/events/blue-mountains-music-festival

Blackheath Rhododendron Festival



During the Annual Rhododendron Festival the Blackheath village comes alive with entertainment and street stalls. The Grand Parade

will take place on the first Saturday in November.

The Annual Art Show will be held at the Blackheath Community Centre with all items are for sale with over 300 exhibits including traditional and contemporary works.

During the festival, there will be varied stalls, activities and music for all the family.

Other activities during November include the Rhodo Black and White Ball, the Rhodo Festival Revue, and the Rhodo Festival Golf Classic. The Campbell Rhododendron gardens are always open for inspection.

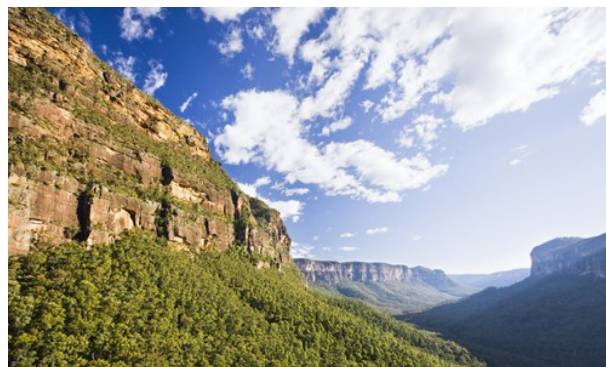
Photo: Princess - Blackheath Rhododendron Festival

Address: Blackheath Village, Wentworth Street, Blackheath Village Blackheath NSW 2785

Internet: www.visitnsw.com/destinations/blue-mountains/katoomba-area/blackheath/events/blackheath-rhododendron-festival

More Info: This event is held on the first Saturday in November.

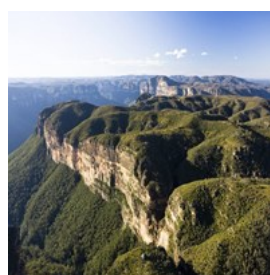
THE TOWNS OF THE BLUE MOUNTAINS



Hamilton Lund/Destination NSW for the Blue Mountains

The majestic Blue Mountains have lured travellers for decades. Named a World Heritage site in 2000, the Greater Blue Mountains World Heritage Area contains eight national parks and protected areas, four internationally significant wetlands and a rich cultural tradition of some six Aboriginal groups dating back many thousands of years. More than 1,500 species of plants and a third of Australia's bird species live in an area ten times older than the Grand Canyon. With luxury retreats, charming villages and towns, and a flourishing artistic community, it's easy to see why the Blue Mountains are a sanctuary for explorers, adventurers and those seeking tranquillity.

Blackheath



This small town is great for enjoying crisp mountain air, brisk walks, good food and cosy accommodation. The village is on an escarpment that has spectacular mountain

scenery on both sides. Govetts Leap Lookout, Evans Lookout and Hargraves Lookout are high-elevation viewing platforms from where you can observe the natural wonder of this World Heritage area.

Photo: Hamilton Lund; Destination NSW

Internet: www.visitnsw.com/destinations/blue-mountains/katoomba-area/blackheath

Katoomba

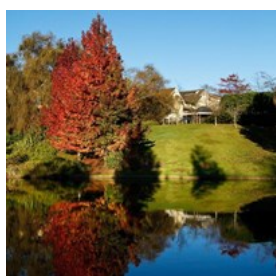


The spectacular scenery of the Blue Mountains surrounds this historic town. Scenic and secluded, Katoomba offers you an opportunity to relax, unwind and recharge, and it's a great base from which to explore the rest of the World Heritage region. You can admire deep valleys, sandstone plateaus, waterfalls and native animals from the many walking trails and lookouts near Katoomba.

Photo: Office of Environment

Internet: www.visitnsw.com/destinations/blue-mountains/katoomba-area/katoomba

Leura



Known as the "garden village", this picturesque town has many fine gardens and grand old homes. Don't miss the celebrated National

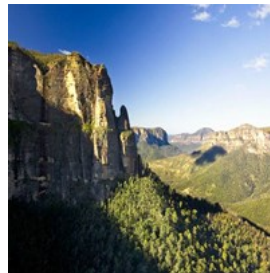
Trust-listed Everglades Gardens, a 1930s treasure featuring European-style gardens. The beautiful natural attractions around Leura are best seen from lookouts at the end of any number of cliff top walking trails. And the village delights shoppers with all manner of boutiques and gourmet food at the many cafés and

restaurants.

Photo: James Horan; Destination NSW

Internet: www.visitnsw.com/destinations/blue-mountains/katoomba-area/leura

Mount Victoria



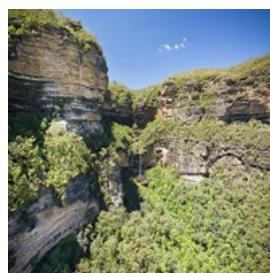
Situated near the top of the Blue Mountains, this town is home to the region's highest peak, One Tree Hill. This charming heritage-listed

village is a fascinating step back in time with its many historic buildings. An abundance of lookouts within easy driving distance from here makes Mount Victoria a good base for visitors.

Photo: Hamilton Lund, Destination NSW

Internet: www.visitnsw.com/destinations/blue-mountains/katoomba-area/mount-victoria

Wentworth Falls



Surrounded by the World Heritage wilderness, this area features a number of excellent bushwalks and lookouts. It offers spectacular views over

the Jamison Valley and the magnificent waterfall for which it's named. The town also has a good collection of Victorian and other historic buildings.

Photo: Hamilton Lund; Destination NSW

Internet: www.visitnsw.com/destinations/blue-mountains/katoomba-area/wentworth-falls

DO AND SEE



James Horan/Destination NSW for the Blue Mountains

The World Heritage-listed Blue Mountains offer many exhilarating adventures and experiences, from walking trails and abseiling to golf and gardens. Deeply connected to Aboriginal culture, the Blue Mountains also offer wonderful insights into The Dreaming and indigenous heritage. Enjoy tours with Aboriginal guides on walking trails through the spectacular wilderness and see traditional dance and music.

Bygone Beautys



Bygone Beautys is home to one of the world's largest private collections of teapots, spanning five centuries. More than 5,500 teapots are in the collection: Royal Doulton, Torquay Ware, Wedgwood, Bunnykins and Toby characters to name a few. From the elegant to the ostentatious, this is a unique antique emporium which also features a tearoom where you can indulge in a Devonshire tea or traditional high tea.

Photo: Bygone Beautys Treasured Teapot Museum & Tearooms

Address: 20 - 22 Grose St, Leura, NSW 2780

Phone: +61 2 4784 3117 or free call to 1800 663 619

Internet: www.visitnsw.com/destinations/blue-mountains/katoomba-area/leura/attractions/bygone-beautys-treasured-teapot

-museum-and-tearooms

Aboriginal Blue Mountains Walkabout



Travel back in time and learn about The Dreaming. This multi-award-winning Aboriginal walkabout adventure will enrich you with its ancient wisdom. Aboriginal owned and guided, you will follow an original walkabout song line of sacred sites through a beautiful and secluded rainforest gully. Walk gently and listen carefully to what the natural bush, fascinating art and ceremonial sites have to tell. An inspiring and powerful experience of ancient knowledge for modern day wisdom.

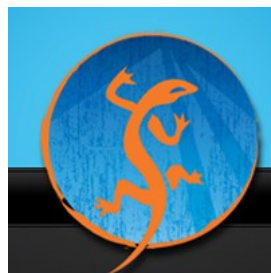
Photo: Aboriginal Blue Mountains Walkabout

Address: Faulconbridge Railway Station, Faulconbridge, NSW 2776

Phone: +61 408 443 822

Internet: www.visitnsw.com/things-to-do/tours/aboriginal-blue-mountains-walkabout#aboriginal-blue-mountains-walkabout-tour

Abseiling and Canyoning with Blue Mountains Adventure Company



The Blue Mountains Adventure Company is an abseiling, rock-climbing, canyoning, and bushwalking specialist. Take on an action-packed adventure, combining an abseiling course and canyon trip - wading, swimming and a thrilling abseil await you. Operating for more than 30 years, the company offers courses for all levels of experience, from novice to advanced thrill-seekers.

Photo: Blue Mountains Adventure Company

Address: 84a Bathurst Rd. Katoomba, NSW 2780

Phone: +61 2 4782 1271

Internet: www.visitnsw.com/things-to-do/tours/blue-mountains-adventure-company

Blue Mountains Botanic Garden



With a world-class collection of plants, this splendid botanic garden is some 1,000 metres above sea level and enjoys spectacular views.

See the famous Wollemi pine, nicknamed the dinosaur tree. The tree was discovered in 1994, deep in a gorge in the Wollemi National Park, part of the Greater Blue Mountains World Heritage Area. Guided tours are available, including an Aboriginal heritage tour

Photo: Greg Bourke - BGCP

Address: Bells Line of Road, Mount Tomah, NSW 2758

Opening hours: 9am - 5.30pm daily with free admission.

Closed Christmas Day.

Phone: +61 2 4567 3000

Internet: www.visitnsw.com/destinations/blue-mountains/katoomba-area/attractions/the-blue-mountains-botanic-garden-mount-tomah

Blue Mountains Cultural Centre



Built on the highest point in Katoomba, the Blue Mountains Cultural Centre offers panoramic views of the Greater Blue Mountains World

Heritage Area. The centre showcases innovative and diverse cultural programs for enjoyment of visitors to the Blue Mountains, featuring the Blue Mountains City Art Gallery, the World Heritage Interpretive Centre and a library.

Photo: Euroline - Blue Mountains Cultural Centre

Address: 30 Parke St, Katoomba, NSW 2780

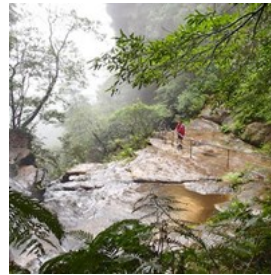
Opening hours: 10am - 5pm weekdays; 10am - 4pm Saturday and Sunday; and 10am - 2pm public holidays. Closed Good

Friday and Christmas Day.

Phone: +61 2 4780 5410

Internet: www.visitnsw.com/destinations/blue-mountains/katoomba-area/katoomba/attractions/blue-mountains-cultural-centre

Blue Mountains National Pass



This 5.4 km walk offers gorgeous views of the Jamison Valley and surrounding cliffs. Magnificent waterfalls inspire you at the

beginning of your walk and reward you again at the end. The track crosses the mid-point of Wentworth Falls and follows a ledge halfway down the 185-metre high cliffs, leading you to the aptly named Giant Staircase with its 1,000 steps (requires reasonable fitness levels).

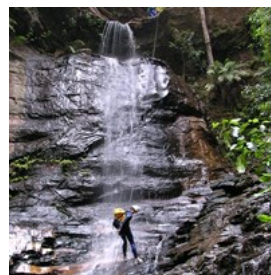
Photo: NPWS

Address: Blue Mountains National Park, entrance via Conversation Hut, Wentworth Falls, NSW 2782

Opening hours: Accessible at all times.

Internet: www.visitnsw.com/destinations/blue-mountains/katoomba-area/wentworth-falls/attractions/blue-mountains-national-park-national-pass

Bush Survival Course with High n Wild Adventures



Learn how to navigate by the sun, moon and stars, make your own compass and sundial, preserve meat and prepare plant foods and medicine. An

overnight two-day camping course with High n Wild Australian Adventures is for people who want to survive when exploring wilderness regions. By the end of the course you will know several ways to light a fire without matches, how to find water and purify it by natural means, and build survival shelters to keep you warm, dry

and safe.

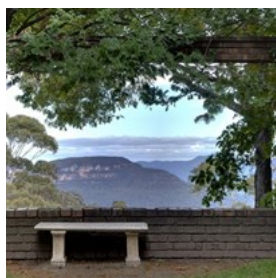
Photo: High n Wild Australian Adventures

Address: 207 Katoomba St (inside the YHA), Katoomba, NSW 2780

Phone: +61 2 4782 6224

Internet: www.visitnsw.com/things-to-do/tours/high-and-wild-australian-adventures

Everglades Historic House and Gardens



A treasure from the 1930s, the elegant and tranquil gardens are acclaimed by garden lovers worldwide and draw inspiration from the

great traditions of European landscape design. You'll also enjoy breathtaking views of the Blue Mountains. The art deco Everglades House features a gallery, gift shop and tea rooms. The tea rooms in the house and courtyard are open seven days a week.

Photo: Everglades Historic House and Gardens

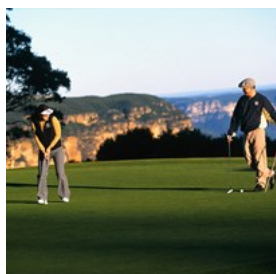
Address: 37 Everglades Ave, Leura, NSW 2780

Opening hours: 10am - 5pm spring and summer. 10am - 4pm autumn and winter.

Phone: +61 2 4784 1938

Internet: www.visitnsw.com/destinations/blue-mountains/katoomba-area/leura/attractions/everglades-historic-house-and-gardens

Golf



The picturesque fairways of the Blue Mountains draw in many avid golfers from across the region and around the world.

Choose from many notable courses, all with sensational views of the World Heritage wilderness.

Wentworth Falls Country Club, Blaxland Rd,
Wentworth Falls. Phone: +61 2 4757 1202

Blackheath Golf Course, Brightlands Ave,
Blackheath.

Phone: +61 2 4787 8406

Leura Golf Club, Sublime Point Rd, Leura.

Phone: +61 2 4782 5011

Springwood Country Club, Hawkesbury Rd,
Springwood.

Phone: +61 2 4751 1122

Photo: Hamilton Lund - Destination NSW

Internet: www.visitnsw.com/destinations/blue-mountains/golf

Govetts Leap Lookout



Govetts Leap Lookout is a popular spot to stop and view the spectacular panorama before descending into the Grose Valley. Here you'll find

one of the region's more physical walks where you can view the towering cliffs leading back up to Perry Lookdown and Evans Lookout. At the top of the escarpment is a picnic ground, toilets and access to cliff top walks, including the Fairfax Heritage Track which is suitable for wheelchairs and prams.

Photo: Nick Rains; Destination NSW

Address: Govetts Leap Rd, Blackheath, NSW 2785

Opening hours: Accessible at all times.

Internet: www.visitnsw.com/destinations/blue-mountains/katoomba-area/blackheath/attractions/govetts-leap-lookout

Jenolan Caves



Regarded as Australia's most outstanding limestone caves, the Jenolan Caves are among the oldest cave systems in the world. Some 340

million years old, the Jenolan Caves feature pure underground rivers and amazing limestone crystal formations. Whether you're a first timer or skilled adventurer, your experienced guide will take you to the depths of the Earth. For those seeking a thrill, an adventure caving tour will see you squeeze, crawl and climb through winding, ancient passageways, with only your head lamp to light your way.

Photo: Jenolan Caves

Address: Jenolan Caves Rd, Jenolan Caves, NSW 2790

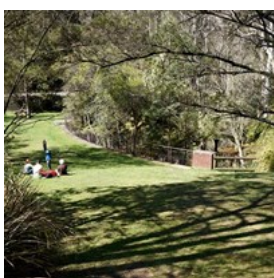
Opening hours: 9am - 5pm daily including public holidays.

Additional tours operate during the school holidays, evenings Monday-Saturday, and by appointment.

Phone: +61 2 6359 3924

Internet: www.visitnsw.com/destinations/blue-mountains/oberon-area/jenolan-caves

Leura Cascades



Leura Cascades is a popular picnic area set amid tall eucalypts. Take a walk beside the nearby rapids on Leura Falls Creek, down to Bridal

Veil Falls and Leura Falls. Other longer walks take you along the cliff tops to Echo Point or down through the Leura Forest and via the Federal or Dardanelles Passes to Katoomba.

Photo: NPWS

Address: Leura Falls Creek, Leura, NSW 2780

Internet: www.visitnsw.com/destinations/blue-mountains/katoomba-area/leura/attractions/leura-cascades

Leuralla Toy and Rail Museum



Discover a delightful collection of children's toys and trains at the Toy and Railway Museum. Families and serious collectors can explore pre- and post-war toys including dolls, teddy bears, lead figures, comics and books, tinplate trains, aeroplanes, automobiles, and working model-railway layouts. The museum also features NSW railway trackside and station memorabilia including lights, trolleys, seats, signals and signs.

Photo: NSW Toy and Railway Museum

Address: 36 Olympian Pde, Leura, NSW 2780

Opening hours: 10am - 5pm daily. Closed Christmas Day.

Phone: +61 2 4784 1169

Internet: www.visitnsw.com/destinations/blue-mountains/katoomba-area/leura/attractions/nsw-toy-and-railway-museum-and-leuralla-gardens

Mayfield Garden



Lovers of beautiful gardens will be delighted with Mayfield Garden, one of the world's largest privately owned cool-climate gardens.

Over 64 hectares, it includes the Water Garden that features an obelisk pond and follies such as a blue-stone bridge and a copper tree fountain. Inspired by the grandeur of English country garden estates, enjoy the tranquillity and browse in the nursery and shop. The Kitchen Café serves seasonal, freshly prepared food.

Photo: Mayfield Garden

Address: 530 Mayfield Rd, Oberon, NSW 2787

Opening hours: 9am - 4pm daily; closed on public holidays

Phone: +61 2 6336 3131

Internet: www.visitnsw.com/destinations/blue-mountains/oberon-area/oberon/attractions/mayfield

Norman Lindsay Gallery & Museum



Recognised as one of Australia's most renowned artists and authors, Norman Lindsay made his home in the Blue Mountains and

produced an array of drawings, etchings, woodcuts, watercolours and sculptures. As the author of *The Magic Pudding*, a children's classic, he is regarded as one of Australia's literary icons. His sandstone home is now a museum which displays his artistic work as well as his superb gardens. A cottage café serves modern Australian cuisine.

Photo: Chris Carter - National Trust of Australia(NSW)
Address: 14 Norman Lindsay Cres, Faulconbridge, NSW 2776
Opening hours: 10am - 4pm daily. Closed Christmas Day
Phone: +61 2 4751 1067
Internet: www.visitnsw.com/destinations/blue-mountains/katoomba-area/faulconbridge/attractions/norman-lindsay-gallery

Scenic World



At Scenic World you choose how you take in the spectacular sites of the Three Sisters, Katoomba Falls and Jamison Valley.

Impressive 360-degree views are the highlight of Scenic Skyway's glass-bottomed carriage. Traveling 270 metres above ancient ravines, it's Australia's highest cable car. You can also ride on Scenic Railway, the world's steepest passenger railway, and discover the thrill of a 52-degree incline. For a more gentle experience, descend into the valleys on Scenic Cableway to see nature at its most spectacular and then amble along the 2.4 km elevated Scenic Walkway through a towering Jurassic rainforest. Unlimited rides on all four experiences are

included in the one ticket price.

Photo: James Horan; Destination NSW
Address: Corner of Violet Stand Cliff Dr, Katoomba, NSW 2780
Opening hours: 9am - 5pm every day including public holidays.
Phone: +61 2 4780 0200
Internet: www.visitnsw.com/destinations/blue-mountains/katoomba-area/katoomba/attractions/scenic-world-blue-mountains

Three Sisters

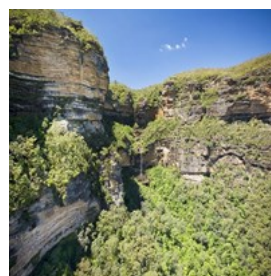


The Three Sisters are a famous rock formation in the Blue Mountains. Offering panoramic views into the Jamison Valley, these three rocky

pinnacles on the edge of the escarpment at Echo Point, Katoomba, have become an iconic symbol for the Blue Mountains. The Three Sisters can be viewed from the main Echo Point lookout or the Queen Elizabeth and Prince of Wales lookouts on the lower levels. A walk from behind the Echo Point Visitor Information Centre will lead you to the top of the Three Sisters via Honeymoon Bridge from the Giant Stairway.

Photo: Office of Environment
Address: Echo Point, off Great Western Highway, Katoomba, NSW 2780
Opening hours: Accessible at all times, floodlit after 10.30pm.
Internet: www.visitnsw.com/destinations/blue-mountains/katoomba-area/katoomba/attractions/three-sisters

Wentworth Falls



Within Blue Mountains National Park, five minutes from the highway, is one of the most majestic waterfalls on the plateau. The falls occur where the Jamison Creek drops over the escarpment and plunges 297 metres over the

upper and lower falls into a large pool before flowing down the creek into the Valley of the Waters. Bushwalks in the area vary from short 10 minutes to full day walks in the valley. National Parks and Wildlife Services produce a booklet with maps and information on the walks. Barbecue and picnic facilities are available and it is about two kilometres from Wentworth Falls train station.

Photo: Hamilton Lund; Destination NSW

Address: Falls Road, Wentworth Rd, NSW 2782

Opening hours: Accessible at all times, floodlit after 10:30pm

Internet: www.visitnsw.com/destinations/blue-mountains/katoomba-area/wentworth-falls/attractions/wentworth-falls

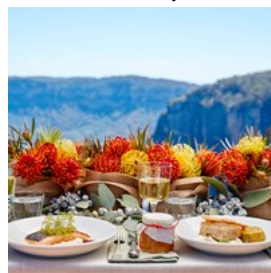
RESTAURANTS AND BARS



Destination NSW for the Blue Mountains

The Blue Mountains are home to many committed chefs who create delicious dishes using fresh seasonal produce for which the area is renowned. But it's not only the award-winning restaurants - boutique bakeries, artisan producers of fine foods, and farmers markets ensure the Blue Mountains have an abundance of great food. Influences include Asian, French and other European cuisine, but contemporary Australian is the typical menu choice attributed to the region.

The Lookout, Echo Point



Perched on the edge of the Blue Mountains Echo Point escarpment, with breathtaking views of the Jamison Valley, The Lookout, Echo Point is a world class food, wine and hospitality destination, unrivalled by any other venue in the mountains.

The Lookout boasts three dining concepts including the Milkbar, perfect for visitors on the go, Restaurant 1128 with stunning views and Heritage menus, and BAR NSW, renowned for its wine and beverage list sourced solely from New South Wales.

The three concepts are the pathway for guests, from all walks of life, to discover and enjoy a culturally rich food and wine experience.

Photo: The Lookout, Echo Point

Address: 33 Echo Point Road, Katoomba, NSW 2780

Phone: +61 2 4782 3653

Internet: www.visitnsw.com/destinations/blue-mountains/katoomba-area/katoomba/food-and-drink/the-lookout-echo-point

Avalon



Inside the art deco Old Savoy Picture Theatre in Katoomba, Avalon Restaurant serves delicious food in a dining room with beautiful views of the Jamison Valley. The meals are prepared in the old projection room, the cocktail bar has taken over from the old refreshment lounge, and a new floor and wall craft the former theatre room.

Photo: Avalon

Address: 8-18 Katoomba St, Katoomba, NSW 2780

Phone: +61 2 4782 5532

Internet: www.visitnsw.com/destinations/blue-mountains/katoomba-area/katoomba/food-and-drink/avalon

omba-area/katoomba/food-and-drink/avalon

Darley's Restaurant



Perched on the edge of the magnificent Jamison Valley and overlooking the World Heritage-listed Blue Mountains is the multi award-winning

Darley's Restaurant. Located in the luxurious Lilianfels Resort & Spa, this long-standing fine-dining restaurant is elegant and comfortable.

Photo: Darley's Restaurant

Address: Lilianfels Ave, Katoomba, NSW 2780

Phone: +61 2 4780 1200

Internet: www.visitnsw.com/destinations/blue-mountains/katoomba-area/katoomba/food-and-drink/darleys-restaurant

Leura Garage



Leura Garage has a distinctly Italian take and a casual atmosphere. The cafe, restaurant and bar serves delicious freshly cooked food with sublime

flavours, blending the best of city and country life. A former mechanic's workshop, it has retained elements of its heritage with a vintage car-hoist used as a wine rack and plant pots made from stacked tyres.

Photo: Leura Garage

Address: 82 Railway Pde, Leura, NSW 2780

Phone: +61 2 4784 3391

Internet: www.visitnsw.com/destinations/blue-mountains/katoomba-area/leura/food-and-drink/leura-garage

Silk's Brasserie



The award-winning Silk's Brasserie focuses on fresh local produce with a contemporary Australian style. The ambience of the elegant dining room with high ceilings and a chequerboard floor is delightful.

Photo: Silk's Brasserie

Address: 128 Leura Mall, Leura, NSW 2780

Phone: +61 2 4784 2534

Internet: www.visitnsw.com/destinations/blue-mountains/katoomba-area/leura/food-and-drink/silks-brasserie

CAFÉS



James Horan/Destination NSW for the Blue Mountains

Café society is thriving in the Blue Mountains. Enjoy quality coffee and tea as well as gourmet breakfast and lunch. For a relaxed sip, take a moment in this splendid panorama of mountains and forests, and enjoy the invigorating crisp air and the subtle natural fragrance of eucalyptus.

Station Espresso



The station Espresso has become a meeting place for both locals and visitors to Wallerawang. Featuring Home Made: Gourmet Pies, Cakes, Tarts, Scones and Pastries all made daily on the

premises as well as a selection of breakfast and luncheon items.

Sourcing the best local produce which includes their freshly roasted coffee from Fish river Roasters. With a wide selection of milks they can ensure you of the perfect cup of coffee to satisfy your needs. the cafe offers eat-in or take-away service. The private dining room can be booked for your private functions.

Photo: Station Espresso

Address: Main Street, Wallerawang, NSW 2845

Phone: +61 406 079 353

Internet: www.visitnsw.com/destinations/blue-mountains/lithgow-area/lithgow/food-and-drink/station-expresso

Cafe 2773



Funky café by day, tapas with a twist at night - 2773 on Ross Street in Glenbrook is the place to meet friends and family to eat, connect and play together.

Located at the foot of the Blue Mountains, this café is a heaven for your palate and soul with an enclosed outdoor play area for kids, a farm with miniature pigs, chickens and veggie patch and a comfortable, chilled out environment.

At night, the woodfire pizza oven heats up, fairy lights come on and the mood shifts to more romantic dining from a menu catering for a diverse range of tastes, plating up temptations such as pork short ribs with Peking sauce. Pair salt and pepper lamb cutlets, fennel and cumin salt, with sides like ripped and torn baked potato, sea salt and thyme and perhaps Parmesan crumbed crispy Brussels sprouts.

Photo: Cafe 2773

Address: 19 Ross Street, Glenbrook NSW 2773

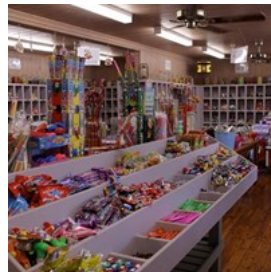
Phone: +61 2 4739 2773

Internet: www.visitnsw.com/destinations/blue-mountains/katoomba-area/blackheath/attractions/the-victory-theatre-antique-centre

omba-area/food-and-drink/cafe-2773

More Info: Fully licensed

The Lolly Bug



Visitors are spoilt for choice at The Lolly Bug in Little Hartley with over 1,500 varieties of lollies from all over the world. You can enjoy takeaway coffee every day of the week, and on weekends delight in Devonshire teas and other beverages. The coffee is locally roasted Fish River Coffee.

Photo: The Lolly Bug

Address: 2297 Great Western Highway, Little Hartley, NSW 2790

Phone: +61 2 6355 2162

Internet: www.visitnsw.com/destinations/blue-mountains/lithgow-area/hartley/attractions/the-lolly-bug

Victory Café



A charming modern Australian café with a daily changing blackboard menu offering freshly made specials. The popular breakfast menu is available until 2pm and an innovative lunch menu offers uses fresh local produce. Take a look at the Jenny Kee mural on the side wall of the cafe and browse the antique market.

Photo: The Victory Theatre Antique Centre

Address: 15-17 Govetts Leap Rd, Blackheath, NSW 2785

Phone: +61 2 4787 6777

Internet: www.visitnsw.com/destinations/blue-mountains/katoomba-area/blackheath/attractions/the-victory-theatre-antique-centre

SHOPPING



Destination NSW for the Blue Mountains

Shopping in the charming towns and villages is a delight. Artisan foods, fashion, memorabilia, splendid antiques and beautiful artworks can all be found in the Blue Mountains.

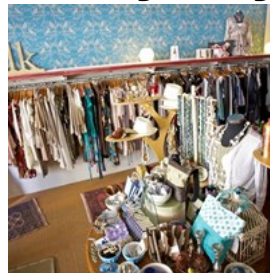
Rick Rutherford's Country Gallery



Rick Rutherford's Country Gallery is a world of country looks spanning the many traditions and interpretations of what country is all about - hand stitchery from Pennsylvania, braided rugs from the Midlands of America and handcrafts all feature in the store. Nessie's Daffodil Tearoom and Badgery Heritage Gallery offer both old-fashioned tearoom and delicious luncheon fare.

Photo: Rick Rutherfords Country Gallery
Address: 3 Badgery Cres, Lawson, NSW 2783
Phone: + 61 2 4759 3434
Internet: www.visitnsw.com/destinations/blue-mountains/katoomba-area/wentworth-falls/attractions/rick-rutherfords-county-gallery

Little Wing Clothing



This Leura boutique features clothing and jewellery designed and made in Australia. Instead of slavishly following fashion, the store stocks timeless pieces that suit women of all shapes and sizes. And it sells an exquisite range of gift items, from candles to soaps to homewares.

Photo: Little Wing
Address: Shop 1, 201 Leura Mall, Leura, NSW 2780
Phone: +61 2 4784 1104
Internet: www.visitnsw.com/destinations/blue-mountains/katoomba-area/leura/attractions/little-wing

The Blue Mountains Chocolate Company



This store uses only Belgian couverture and locally sourced, premium-grade ingredients for the flavoured fillings of their handmade chocolates - choose from more than 50 varieties. Join a chocolate-making course or watch the in-house chocolatier working in the glass-walled kitchen. And enjoy real hot chocolate and delicious homemade cakes in the café.

Photo: Blue Mountains Chocolate Company
Address: 176 Lurline St, Katoomba NSW 2780
Phone: +61 2 4782 7071
Internet: www.visitnsw.com/destinations/blue-mountains/katoomba-area/katoomba/food-and-drink/blue-mountains-chocolate-company

Carrington Cellars and Deli



Stop here for great wines and a tasty selection from the delicatessen. Housed in an old power station, enjoy checking out the rows of boutique local

and foreign wines and mouth-watering deli items as well as admiring the carefully restored building.

Photo: Carrington Cellars

Address: 15-47 Katoomba St, Katoomba, NSW 2780

Phone: +61 2 4782 1111

Internet: www.visitnsw.com/destinations/blue-mountains/katoomba-area/katoomba/attractions/carrington-cellars-and-deli

Fish and Fowl



Fish and Fowl sells fresh and cooked seafood as well as select poultry and deli goods. The store sources fresh seafood daily from the Sydney

Fish Market auction, and also stocks free-range and organic poultry, game, charcuterie, cheeses and other gourmet products.

Photo: Fish and Fowl

Address: 1 Pioneer Pl, Katoomba, NSW 2780

Phone: +61 2 4782 4106

Internet: www.visitnsw.com/destinations/blue-mountains/katoomba-area/katoomba/attractions/fish-and-fowl

Gleebooks



Browse in this quality bookstore with its impressive range of titles covering diverse topics and interests. If a particular book you're

looking for is not in store, the friendly staff will order it in for you.

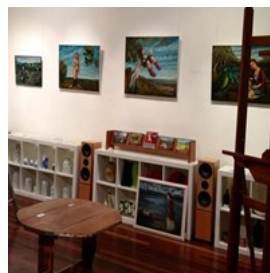
Photo: Gleebooks

Address: Shop 1, Colliers Arcade, Govetts Leap Rd, Blackheath, NSW 2785

Phone: +61 2 4787 6340

Internet: www.visitnsw.com/destinations/blue-mountains/katoomba-area/blackheath/attractions/gleebooks-blackheath

Hat Hill Gallery



The Hat Hill Gallery is a commercial fine art gallery located in an original 1920s printing factory in Blackheath.

The gallery presents fine contemporary art created by artists of the Blue Mountains region and beyond.

Photo: Hat Hill Gallery

Address: 3 Hat Hill Rd, Blackheath, NSW 2785

Opening hours: Thursday to Monday, 10am - 4pm.

Phone: +61 2 4787 7033

Internet: www.visitnsw.com/destinations/blue-mountains/katoomba-area/blackheath/attractions/hat-hill-gallery

iKOU



iKOU hand-makes 100 per cent natural bath and body products, natural botanical skin-care, natural wax candles and herbal teas. iKOU's

philosophy is to use pure, natural ingredients that are ethically sourced. The range of iKOU's products encourages users to take the time to rest and relax and maintain equilibrium.

Photo: iKOU

Address: 126 Leura Mall, Leura, NSW 2780

Phone: +61 2 4748 1777

Internet: www.visitnsw.com/destinations/blue-mountains/katoomba-area/leura/attractions/ikou

Lost Bear Gallery



The Lost Bear Gallery is home to an extensive collection of contemporary fine art. The gallery features 12 exhibition spaces and an outdoor sculpture garden. You can purchase a range of sculptures in the gallery shop, as well as paintings, ceramics, glass works and cards by the gallery's contemporary artists.

Photo: Lost Bear Gallery

Address: 98 Lurline Street, Katoomba, NSW 2780

Phone: +612 4782 1220

Internet: www.visitnsw.com/destinations/blue-mountains/katoomba-area/katoomba/attractions/lost-bear-gallery

The French Shoppe



An exquisite range of French products, all sourced and imported directly from the finest suppliers in France. The boutique sells luxurious gift products including body and bath products, candles, room fragrances and diffusers, perfumes, books, umbrellas, gloves and scarves. A range of products for men is also available.

Photo: The French Shoppe

Address: Shop 6, 166-168 Leura Mall, Leura, NSW 2780

Phone: +61 2 4784 2383

Internet: www.visitnsw.com/destinations/blue-mountains/katoomba-area/leura/attractions/the-french-shoppe

The House of Wool



The House of Wool sells hand-spun and hand-dyed wools and yarns from Australian fibre artists, as well as quality commercially produced

wools and cottons. The store holds regular workshops on various knitting and crochet techniques as well as beginners and advanced spinning.

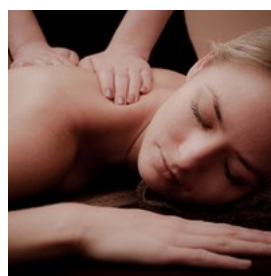
Photo: The House of Wool

Address: 40 Govetts Leap Rd, Blackheath, NSW 2785

Phone: +61 418 863 736

Internet: www.visitnsw.com/destinations/blue-mountains/katoomba-area/leura/attractions/the-house-wool

Spa Sublime



This multi award-winning day spa provides a private and secluded space to indulge. Located within the stunning grounds of the historic

Mountain Heritage Hotel, Sublime Spa uses only high quality 100% Australian-made products. You can purchase a product from their signature AKORAH product range, such as bath milks, essential oils, and herbal teas.

Photo: Spa Sublime

Address: 9 Penault Ave, Katoomba, NSW 2780

Phone: +61 2 4782 3113

Internet: www.visitnsw.com/destinations/blue-mountains/katoomba-area/katoomba/attractions/spa-sublime-day-spa

ACCOMMODATION



James Morgan/Destination NSW for the Blue Mountains

Beautiful panoramas, World Heritage wilderness and a region steeped in history make the Blue Mountains a popular tourist destination. You'll find a great range of accommodation to suit your lifestyle and budget, from youth hostels to luxury resorts.

Echoes Boutique Hotel and Restaurant



The elegance of a small boutique hotel with stunning views from most of the 14 suites, Echoes Boutique provides relaxation in a superbly styled home away from home. Enjoy balconies, ensuites, open fireplaces, a spa, terrace gardens plus a piano bar with fine food. Guests can also enjoy five-star facilities at the multi award-winning sister property Lilianfels Resort and Spa, located next door.

Photo: Echoes Boutique Hotel and Restaurant

Address: 3 Lilianfels Ave, Katoomba, NSW 2780

Phone: +61 2 4782 1966

Internet: www.visitnsw.com/destinations/blue-mountains/katoomba-area/katoomba/accommodation/echoes-boutique-hotel-and-restaurant

Emirates One&Only Wolgan Valley



This is a conservation-based resort that offers the rare opportunity to experience true luxury in a spectacular, secluded, Australian bush setting. Located in the Greater Blue Mountains World Heritage Area, the resort is set within its own 2,800 hectare carbon-neutral conservation and wildlife reserve. The resort features 40 beautifully appointed suites each with its own swimming pool, a main homestead with various dining settings, a heritage precinct, and the Timeless Spa.

Photo: Emirates One&Only Wolgan Valley

Address: 2600 Wolgan Rd, Wolgan Valley, NSW 2790

Phone: +61 2 9290 9733

Internet: www.visitnsw.com/destinations/blue-mountains/lithgow-area/lithgow/accommodation/emirates-one-only-wolgan-valley

Katoomba Manor



Opened in 2013, this guesthouse offers gorgeous modern French-styled suites with all amenities. Your stay includes cooked breakfasts, in-house movies, free Wi-Fi and e-bike hire. The manor is just 500 metres away from Katoomba railway station and is in walking distance from the town's many restaurants.

Photo: Keith Maxwell

Address: 219 - 223 Great Western Highway, Katoomba, NSW 2780

Phone: +61 2 4782 2669

Internet: www.visitnsw.com/destinations/blue-mountains/katoomba-area/katoomba/accommodation/katoomba-manor

Leura Rose Cottage



Nestled amid pines and ferns is Leura Rose Cottage, a sanctuary surrounded by a private garden, with no disturbances other than the calls of currawongs and kookaburras. Less than a minute by car or a short five-minute walk to Leura Mall, this beautiful turn-of-the-century cottage is dedicated to relaxation and indulgence.

Photo: Mountain Whispers

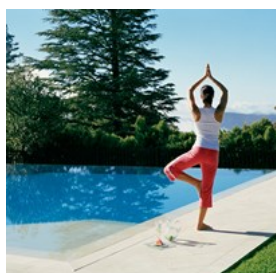
Address: 17 Woodford St, Leura, NSW 2780

Phone: 1300 721 321

Internet: www.visitnsw.com/destinations/blue-mountains/katoomba-area/leura/accommodation/leura-rose-cottage

Email: indulge@mountainwhispers.com.au

Lilianfels Resort and Spa



A magnificent historic country mansion set in expansive manicured gardens and housed in the spectacular scenery of the Blue Mountains. A haven for romantics, explorers, gourmets, nature lovers, and anyone who simply wants to escape from it all. A superb spa and multi award-winning kitchen add to the enticement.

Photo: Lilianfels Resort and Spa, Blue Mountains

Address: 5 - 19 Lilianfels Ave, Katoomba, NSW 2780

Phone: +61 2 4780 1200

Internet: www.visitnsw.com/destinations/blue-mountains/katoomba-area/katoomba/accommodation/lilianfels-resort-and-spa-blue-mountains

Norman Lindsay Cottage



The Norman Lindsay Gallery Cottage is on the tranquil grounds of the artist's former home. The Norman Lindsay Gallery and Museum are adjacent to the property and free access is granted to guests during their stay.

Photo: Norman Lindsay Cottage

Address: 14 Norman Lindsay Cres, Faulconbridge, NSW 2776

Phone: +61 2 4751 1067

Internet: www.visitnsw.com/destinations/blue-mountains/katoomba-area/faulconbridge/accommodation/norman-lindsay-cottage

Old Leura Dairy



Set in beautifully landscaped gardens, Old Leura Dairy's six accommodation styles offer something special. With whimsical names

such as The Milking Shed, The Workers Cottage, Buttercup Barn, and The Straw Bale, each has its own unique character.

Photo: Old Leura Dairy

Address: 61 Kings Rd, Leura NSW 2780

Phone: +61 2 4782 0700

Internet: www.visitnsw.com/destinations/blue-mountains/katoomba-area/leura/accommodation/old-leura-dairy

Strawberry Patch Cottage



This tranquil 1912 cottage, set in a delightful garden, has been meticulously restored to offer you a luxurious and private retreat just around the corner from Leura Village. You'll have the entire cottage all to

yourself so you can enjoy its well-appointed features and special touches as you relax and unwind.

Photo: Strawberry Patch Cottage

Address: 10 Wascoe St, Leura, NSW 2780

Phone: 1300 721 321

Internet: www.visitnsw.com/destinations/blue-mountains/katoomba-area/leura/accommodation/strawberry-patch-cottage

The Carrington Hotel



The historic Carrington Hotel is in the heart of Katoomba. Built in 1882 and recently restored to its former grandeur, this heritage-listed hotel has played a significant role in the growth of Katoomba as a resort town. The hotel features an award-winning Grand Dining Room, The Old City Bank Brasserie, cocktail bar, billiards room, day spa, and more.

Photo: Balpar Pty Ltd

Address: 15 - 47 Katoomba St, Katoomba, NSW 2780

Phone: +61 2 4782 1111

Internet: www.visitnsw.com/destinations/blue-mountains/katoomba-area/katoomba/accommodation/the-carrington

The Fairmont Resort



Fairmont Resort is located on the edge of the awe-inspiring Jamison Valley. The award-winning 223 accommodation rooms and suites feature panoramic views of either the Jamison Valley, fairways of the adjoining Leura Golf Club, or the gardens and walkways.

Photo: Fairmont Resort Blue Mountains

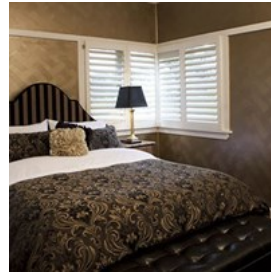
Address: 1 Sublime Point Rd, Leura, NSW 2780

Phone: +61 2 4785 0000

Internet: www.visitnsw.com/destinations/blue-mountains/katoomba-area/leura/accommodation/fairmont-resort-and-spa-blue-mountains-mgallery-sofitel

omba-area/leura/accommodation/fairmont-resort-and-spa-blue-mountains-mgallery-sofitel

The Gatsby



On the doorstep of the World Heritage area's most famous attractions, this three-bedroom self-contained cottage has been meticulously

restored in Art Deco style. The Gatsby offers guests luxury self-contained cottage accommodation with no detail overlooked and sleeps one to three couples in the luxury of days gone by.

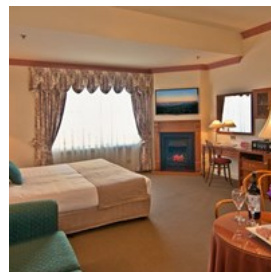
Photo: The Gatsby

Address: 314a Katoomba St, Katoomba, NSW 2780

Phone: 1300 721 321

Internet: www.visitnsw.com/destinations/blue-mountains/katoomba-area/katoomba/accommodation/the-gatsby

The Mountain Heritage Hotel And Spa Retreat



This award-winning property is beautifully situated in a secluded location that commands spectacular views of the rugged cliff faces and

deep gorges of the World Heritage wilderness. Every spacious room or suite has a king or queen-sized bed and many offer spectacular views and romantic fireplaces.

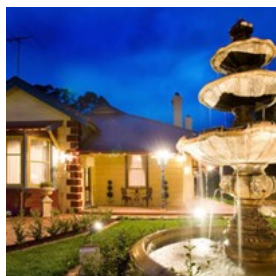
Photo: The Mountain Heritage Hotel And Spa Retreat

Address: Corner of Apex and Lovel St, Katoomba, NSW 2780

Phone: +61 2 4782 2155

Internet: www.visitnsw.com/destinations/blue-mountains/katoomba-area/katoomba/accommodation/mountain-heritage-hotel-and-spa-retreat-blue-mountains

Varenda



Varenda is a lavishly appointed Edwardian residence, combining old world charm with the modern comforts of today. This self-contained

accommodation consists of three beautiful bedrooms and is just 200 metres from the heart of Leura.

Photo: Varenda

Address: 97 Railway Pde, Leura, NSW 2780

Phone: 1300 721 321

Internet: www.visitnsw.com/destinations/blue-mountains/katoomba-area/leura/accommodation/varenda-luxury-leura-accommodation

TOURIST INFORMATION



James Horan/Destination NSW for the Blue Mountains

The majestic Blue Mountains are easy to reach from Sydney. Discover the region at your own pace by renting a car, or join one of the many tours that explore this World Heritage-listed wilderness. You can even take a train from Sydney's Central Station to the Blue Mountains - the trip to Katoomba is only two hours.

Airport



For visitors travelling from overseas, the nearest airport is Sydney Airport. From there, the best means to travel to the Blue Mountains is by

car - about a 50-minute drive to the entrance at Glenbrook. Follow the signs to Parramatta and take the M4 Motorway at Strathfield through to Lapstone and the Blue Mountains.

The trip to Leura or Katoomba takes about 90 minutes from the airport. If you're travelling by car, take the M4 Motorway out of Sydney or take the longer, meandering route via Windsor and Kurrajong along the Bells Line of Road. The rise from the coastal plain begins at Glenbrook, 65km west of Sydney, and the road passes through many small towns along the way to Leura, Katoomba and on to Blackheath. The iconic rock formation known as the Three Sisters is at Echo Point, Katoomba.

Alternative routes will take you on a more scenic path via Bells Line of Road through Richmond and Mount Tomah, to Bell and across to Mount Victoria. It's a delightful drive and a different introduction to the vast Blue Mountains National Park compared to the Great Western Highway. If coming from the outer west, follow the signs to Lithgow, go through Hartley and enter the Blue Mountains through Victoria Pass which will take you straight to the top of Mount Victoria.

Photo: Juan Garces

Public Transport



Although having a car in the Blue Mountains offers a far greater opportunity to see the sights, travelling by public transport to your

destination offers a relaxing alternative. An efficient rail service takes you directly from Sydney Airport to Central Railway Station. Shuttle buses from the airport also take you to Central Station. From here, trains serviced by Transport NSW take you to the Blue Mountains - Wentworth Falls, Leura, Katoomba, Blackheath, Mount Victoria and Lithgow. They run regularly and more frequently during peak commuter times. For more details visit:
<http://www.transportnsw.info/>

Once you arrive in the Blue Mountains, there are various transport options.

You can take a red double-decker Explorer Bus to the top 30 attractions with a ticket that gives you all-day access to the hop-on, hop-off bus. For more information visit www.explorerbus.com.au

The Blue Mountains Bus Company operates the hop-on, hop-off Trolley Tours around the Katoomba and Leura areas and a public transport system. You can also reserve seats for a bus to the Jenolan Caves. Go to www.bmbc.com.au for schedules.

Greyhound buses also have daily scheduled services which leave Central Station for Katoomba and Lithgow. Visit www.greyhound.com.au

Photo: Pierre-Luc Auclair
Internet: www.transportnsw.info

Taxis



Readily available from the stations of Blaxland, Springwood, Wentworth Falls, Leura and Katoomba railway stations. • Springwood

Taxis - Phone: +61 2 4751 1444

- Katoomba Leura Radio Cabs - Phone: +61 2 4782 1311
- Blue Mountain Taxis - Phone: +61 2 4759 1724
- Blue Mountains Combined Taxis - Phone: +61 2 4758 8800

Photo: Arrival Guides

Medical



Blue Mountains
Pharmacy 30-34 Parke St,
Katoomba, NSW 2780
Phone: +61 2 4782 5450
BLOOMS THE CHEMIST
161 - 163 Macquarie Rd,

Springwood, NSW 2777
Phone: +61 2 4751 2963

GREENWELL AND THOMAS PHARMACY
145 Katoomba St, Katoomba, NSW 2780
Phone: +61 2 4782 1066

HAZELBROOK PHARMACY
1/192 Great Western Hwy, Hazelbrook, NSW,
2779
Phone: +61 2 4758 6431 (Open after hours)

LEURA PHARMACY
161-163 Leura Mall, Leura, NSW 2780
Phone: +61 2 4784 1386 (Open after hours)

WENTWORTH FALLS PHARMACY,

1/38 Station St, Wentworth Falls, NSW 2782
Phone: +61 2 4757 1410

Photo: Gemma Garner

Telephone



Country code: (+61).
Area Code: (02)

Photo: Jardson Almeida

Electricity



220-240V

Photo: Stirling Tschan

Population

Latest census 76,000

Currency

Australian Dollar (1 AUD=100 cents)

Internet

www.visitnsw.com/destinations/blue-mountains

Newspapers

Blue Mountains Gazette
The Echo Community Newspaper
Blue Mountains Life Magazine

Emergency numbers

Police, Fire and Ambulance 000

Tourist information

Blue Mountains Visitor Information Centre, Echo Point
Echo Point Road, Katoomba, NSW 2780
Opening hours: 9am - 5pm. Closed Christmas Day
Phone: 1300 653 408
www.bluemountainscitytourism.com.au

Blue Mountains Visitor Information Centre, Glenbrook
Hammett Place, Glenbrook, NSW 2773
Opening hours: 8.30am - 4pm Monday to Saturday. 8.30am -
3pm Sunday. Closed Christmas Day

Phone: 1300 653 408
www.bluemountainscitytourism.com.au

Blue Mountains Heritage Centre
Govetts Leap Rd, Blackheath, NSW 2785
Opening hours: 9am - 4.30pm. Closed Christmas Day
Phone: +61 2 4787 8877 www.environment.nsw.gov.au

Oberon Visitor Information Centre
48 Ross St, Oberon, NSW 2787
Opening hours: 9.30am - 5pm. Closed Christmas Day and
Boxing Day
Phone: +61 2 6329 8210 www.oberonaustralia.com.au

Lithgow Visitor Information Centre
1137 Great Western Highway, Lithgow, NSW 2790
Opening hours: 9am - 5pm. Closed Christmas Day
Phone: +61 2 6350 3230 www.tourism.lithgow.com