



# Lech Zürs

in collaboration with Lech Zürs Tourismus GmbH

Photo: Lech Zürs Tourismus by Sepp Mallaun



Lech Zuers Tourimus

For over a century, guaranteed snow, hospitality, tradition and sophisticated tranquillity have been attracting winter sports enthusiasts from all over the world to Lech Zürs am Arlberg. It is one of the select group of twelve villages known as the "Best of the Alps". It is not only ambitious sportspeople who appreciate this heavenly winter landscape. The winter season 2016/2017 also has plenty to offer walkers, gourmets and culture lovers.

Ski Arlberg provides an unparalleled skiing experience with a total of 87 cable cars and lifts, 305 kilometres of ski runs and 200 kilometres of high Alpine deep powder snow runs.

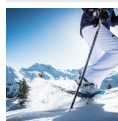


Lech Zürs Tourismus GmbH



Lech Zuers Tourismus by Christoph Schoech

## Featured



### Snowshoeing

Modern technology makes it possible. While it used to be infinitely tedious ...



### Around the ice

The natural ice rink in Zürs is a particular highlight. You can turn pirouet...



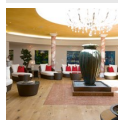
### Winter Hiking Trails

The over 40 kilometre long network of winter trails around Lech Zürs am Arlb...



### Tannberg Museum

The historic Walser Museum is located in the fire station on the road to Stu...



### Burg Vital Spa

vitalSPA with 3.800 m<sup>2</sup> and 900 m<sup>2</sup> sunbathing area  
The team of qualified, ...

## Top 5



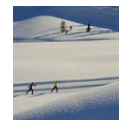
### Skiing

305 kilometres of ski slopes of all levels of difficulty and 200 kilometres ...



### Heliskiing

Heli-skiing offers freeride aficionados a truly memorable experience. Lech Z...



### Cross-country skiing

With its extremely well prepared cross-country ski trails and skating routes...



### The White Ring - The Race

In 2006, "The White Ring - The Race" took place for the first time. It has l...

### Run of fame - maximum skiing ex...

With the new Flexenbahn, a spectacular skiing run will be created: The new "Run of Fame" has been dedicated to the Arlberg



## THE CITY



*Lech Zürs Tourismus GmbH*

Outstanding natural conditions, a winter sports offering that is unequalled and an excellent tourist infrastructure, together with cordial hospitality, outstanding cuisine and an inspiring combination of tradition and modernity - these are the ingredients that make your winter holiday in Lech Zürs am Alberg unforgettable.

Lech am Arlberg - elegant, stylish  
Stylish Lech with its sunny terrace at Oberlech is synonymous with top hotels, restaurants and cosmopolitan flair, and is a popular holiday destination with the European aristocracy. That being said, it has not lost any of its original mountain village charm. Known for its extensive ski runs and routes, perfect winter days are rounded off in this "World Gourmet Village" at award winning mountain lodges and restaurants. One of the many events that take place in Lech is the legendary White Ring - a race which nowadays attracts up to 1,000 participants. The White Ring is a unique ski circuit in the Alps between Lech, Zürs, Zug and Oberlech, the very heart of this excellent ski area.

Zürs am Arlberg - exquisite, prominent  
Immediately after the Flexen Pass and flanked by mountain slopes is the small yet very exclusive village of Zürs, a popular meeting place for the international jet set. Especially appreciated for

its wide, treeless slopes and deep snow, it enjoys the reputation of being a deep snow Mecca. This 150 inhabitant village also has a hangar, from which adventurous heli-ski tours can be made. Arlberg is the only place Austria-wide where heli-skiing is available: with a choice of two different peaks, both expert and intermediate skiers can enjoy this unparalleled experience from Monday to Friday, excluding bank holidays and always accompanied by a trained guide. Zürs is known not least for its vibrant night life in trendy bars and fashionable clubs.

## DO & SEE

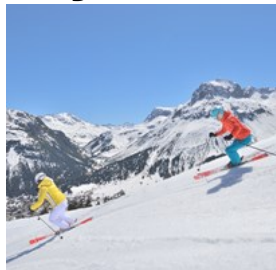


*Lech Zuers Tourismus by Christoph Schoech*

Alpine skiing is a major priority in Lech Zürs am Arlberg. For decades the Arlberg has been known as the "cradle of Alpine skiing" and casts a spell over enthusiastic skiers year after year, winter after winter.

People who like alternative winter sports will find ideal conditions and lots on offer in Lech Zürs am Arlberg. There are fantastic routes for cross-country skiers and snowshoers. In addition, visitors can enjoy romantic horse-drawn sleigh rides through the snow-covered landscape and curling.

## Skiing



305 kilometres of ski slopes of all levels of difficulty and 200 kilometres of exclusive deep powder snow runs make Ski Arlberg a

unique winter sports resort. The five villages of Lech, Zürs, Stuben, St. Christoph and St. Anton am Arlberg open their doors onto the fascinating world of the finest powder snow and majestic Alpine peaks, of ample variety and a unique sense of freedom.

In winter 2016/17 the new Flexenbahn between Zürs and Stuben/Rauz will be opened, thus providing a link for the entire Arlberg skiing region - making it possible to easily reach all Arlberg skiing locations on skis. This makes the Arlberg skiing region the largest continuous skiing area in Austria, making skiing and ski holidays even more versatile and comfortable!

Photo: Lech Zürs Tourismus\_ by Sepp Mallaun

Opening hours: 9.00am - 4 pm

Phone: +43 5583 28240

Internet: [www.skiarlberg.at](http://www.skiarlberg.at)

Email: [info@skiarlberg.at](mailto:info@skiarlberg.at)

## Heliskiing



Heli-skiing offers freeride aficionados a truly memorable experience. Lech Zürs is the only resort in Austria to offer packages for this exciting

snow activity. You can choose between two magnificent peaks: the "Mehlsack" summit is ideal for experienced skiers, while the "Schneetäli-Orgelscharte" is recommended for skiers with intermediate skills - and is particularly attractive in the spring on the

hard-packed snow. Heli-skiing packages are for up to four people including the ski guide and can be booked directly through the ski schools in Lech and Zürs.

Photo: Lech Zürs Tourismus by Sepp Mallaun

Opening hours: in the winter season from monday to friday

Internet: [www.lechzuers.com/heliskiing](http://www.lechzuers.com/heliskiing)

## Cross-country skiing



With its extremely well prepared cross-country ski trails and skating routes, Lech Zürs am Arlberg offers cross-country skiers

everything their hearts desire. Guaranteed snow and 27 kilometres of varied cross-country trails will delight both casual and professional sportspeople. The cross-country trails can be found amidst the fascinating Alpine mountain landscape and can be used free during the whole season.

Photo: Lech Zürs Tourismus by Sepp Mallaun

Address: Lech Zürs am Arlberg

More Info: free of charge

## The White Ring - The Race



In 2006, "The White Ring - The Race" took place for the first time. It has long since become a "cult race" with an attractive supporting programme.

Participants have to rise to the challenge of 22 kilometres of pistes and 5,500 metres of ascent. "The White Ring - The Race" is thus "the world's longest ski race". Registration takes place in September 2016. Incidentally, the course record is held by former downhill ski racer Patrick Ortlieb with a time of 44:35:07 minutes. It

remains to be seen whether this record will be broken on the 10th birthday of "The White Ring - The Race".

Save the date: 19.01.2019

Photo: Lech Zuers Tourismus

Address: Lech Zürs am Arlberg

Phone: +43 5583 2161

Internet: [www.lechzuers.com/the-white-ring-the-race](http://www.lechzuers.com/the-white-ring-the-race)

Email: [info@lech-zuers.at](mailto:info@lech-zuers.at)

### Run of fame - maximum skiing experience

With the new Flexenbahn, a spectacular skiing run will be created: The new "Run of Fame" has been dedicated to the Arlberg skiing stars and boosts the skiing experience to a maximum of 65 downhill skiing kilometres and an incredible altitude difference of 18,000 metres. The skiing run leads across the Arlberg and takes in the entire dimension of the fully connected skiing area - from Warth in the north via Lech Zürs with the new Flexenbahn to St. Anton/Rendl in the south - the entire Arlberg skiing area will be covered. In addition, once a year there will be a "Hunt of Fame" - a top class ski race along the new skiing run on the Arlberg.

Internet: [www.run-of-fame.ski](http://www.run-of-fame.ski)

### Winter Hiking Trails



The over 40 kilometre long network of winter trails around Lech Zürs am Arlberg takes you through a unique winter landscape, with the

permanent presence of clear, fresh winter air, crisp snow and a breathtaking view over the surrounding peaks. Not only the sun terraces, huts and "Alps", but also numerous staging points invite you to take a well earned rest. Experience the stillness and enjoy nature in her

primordial form.

Photo: Lech Zürs Tourismus by Christoph Schoech

### Horse drawn sleigh rides



Whether by day or at night - a ride on a horse-drawn sleigh is always a highlight of your winter holiday!

Photo: Lech Zürs Tourismus by Christoph Schoech

Internet: [www.lechzuers.com/horse-drawn-sleigh-rides](http://www.lechzuers.com/horse-drawn-sleigh-rides)

### Game watching / Game feeding

Wild animals, particularly the native red deer, are shy forest dwellers and you don't very often catch sight of them in the wild.

However, during the hard winter months when food becomes scarce, deer venture very close to populated areas and almost forget they are afraid of people. This means you can watch majestic deer feeding at dusk at close range. Experience this unusual natural spectacle from the shelter of a hide. Every Tuesday during the winter season we offer guided hikes to watch the wildlife. Further information and reservations at Lech Zürs Information.

Address: Dorf 2, 6764 Lech am Arlberg

Phone: +43 5583 21610

Internet: [www.lechzuers.com](http://www.lechzuers.com)

Email: [info@lech-zuers.at](mailto:info@lech-zuers.at)

### Toboggan run Oberlech - Lech

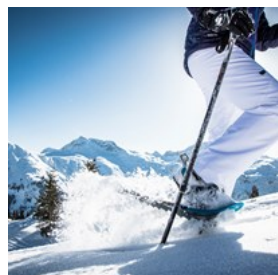


A 1.2-kilometre toboggan run winds its way through the forest of Lech and has several tight twists in store. And the high-speed descent just before the

last station is guaranteed to cause adrenaline levels to really skyrocket. Tremendous fun which can be repeated quickly as the Oberlech mountain railway takes adventurous souls back to the start within four minutes.

Photo: Lech Zürs am Arlberg by Sepp Mallaun  
Address: Dorf 201, 6764 Lech am Arlberg  
Opening hours: daily 09:00 am to 10:00 pm  
Phone: +43 5583 23500  
Internet: [www.lechzuers.com/tobogganing](http://www.lechzuers.com/tobogganing)

### Snowshoeing



Modern technology makes it possible. While it used to be infinitely tedious to trudge through the winter landscape despite wearing

snowshoes, snowshoeing is today one of the most pleasant and most relaxing ways to exercise in the open air during winter. And what's more, snowshoeing is one of the sustainable winter sports.

That is because it allows everything that is good for relaxation and revival to be combined - nature as far as the eye can see, clear, fresh mountain air and steady, rhythmic exercise. The great thing about it is that no special knowledge or specific training are needed for snowshoeing. Whoever wants to try it out can rent the equipment on-site - Lech Zürs Tourist Office has the necessary information.

Buckle up the snowshoes and get moving. Fans of this sport will find an almost endless array of possibilities in Lech Zürs. Highly recommended: a hike with a guide. The guide knows the area inside out and leads hikers on the most beautiful routes to the most amazing places in Lech Zürs. Not only sun terraces, huts and "Alps", but also numerous staging points invite you to take a well earned rest. Experience the stillness and enjoy

nature in her primordial form.

Photo: Lech Zürs Tourismus by Christoph Schoech  
Address: Lech Zürs am Arlberg  
Phone: +43 5583 21610  
Internet: [www.lechzuers.com/winter-hiking](http://www.lechzuers.com/winter-hiking)  
Email: [info@lech-zuers.at](mailto:info@lech-zuers.at)

### Skischool Lech



Arlberg and the ski schools of Lech, Oberlech and Zürs make an outstanding combination. On the one hand, there is the fascination of an

exceptional ski area and, on the other, a range of ski schools which are striving to surpass their guests' expectations.

Skischool Lech group courses and private instruction

- Ski courses for children aged between 4 1/2 - 12 years
- Location: Lech Kinderland near the Flühenlift & Lech-Oberlech ski slopes
- Lunch taken together in one of the restaurants at the slope (costs: € 12,50 (lunch & drink) chips "kids menu" available at the ski school
- Meeting point group assignment: 10.00 am at Hotel Arlberg
- Group courses in 6 different skill levels (Special: "Early Bird" intensive courses in small groups with max. 5 children)

Photo: Skischule Lech  
Address: Tannberg 185, 6764 Lech am Arlberg  
Opening hours: Sun-Fri 8.30 am - 5.00 pm, Sat 8.30 am - 6.00 pm.  
Phone: +43 5583 2355  
Internet: [www.skilech.info](http://www.skilech.info)  
Email: [sport@skilech.info](mailto:sport@skilech.info)

### **Skischool Oberlech**

Arlberg and the ski schools of Lech, Oberlech and Zürs make an outstanding combination. On the one hand, there is the fascination of an exceptional ski area and, on the other, a range of ski schools which are striving to surpass their guests' expectations.

Skischool Oberlech group courses and private instruction

-- Ski courses for children aged 31/2 years and older

- Location: Oberlech Kinderland & Lech-Oberlech ski slopes

- Lunch taken together at the Burg Hotel possible (costs: € 13,- incl. lunch & drink)

- Meeting point group assignment: 9.30 am in front of the Hotel Sonnenburg

- Group courses available in 10 different skill levels (min. 4 people per group)

- Highlight: Children's ski race with award ceremony (Fridays)

Address: Oberlech 556, 6764 Lech am Arlberg

Opening hours: daily 8.30 am - 5.00 pm.

Phone: +43 5583 2007

Internet: [www.skischule-oberlech.at](http://www.skischule-oberlech.at)

Email: [info@skischule-oberlech.at](mailto:info@skischule-oberlech.at)

### **Skischool Zürs**

Arlberg and the ski schools of Lech, Oberlech and Zürs make an outstanding combination. On the one hand, there is the fascination of an exceptional ski area and, on the other, a range of ski schools which are striving to surpass their guests' expectations.

Skischool Zürs group courses and private instruction

-- Ski courses for children aged 4 years and older

- Location: Bockis Kinderland Zürs

- Lunch taken together possible (costs: € 18,- incl. lunch & drink)

- Meeting point group assignment: 09.20 am at the Edelweiß meeting site next

to the large snowman (children are taken to the ski area by the ski train "Bocki Express" and back again)

- Highlight: Children's ski race with award ceremony (Fridays)

Address: Zürs 277, 6763 Zürs am Arlberg

Opening hours: daily 8.00 a.m. - 6.00 p.m.

Phone: +43 5583 2611

Internet: [www.skischule-zuers.at](http://www.skischule-zuers.at)

Email: [office@skischule-zuers.at](mailto:office@skischule-zuers.at)

### **Schneesportschule Omeshorn Alpincenter Lech**

Arlberg and the ski schools of Lech, Oberlech and Zürs make an outstanding combination. On the one hand, there is the fascination of an exceptional ski area and, on the other, a range of ski schools which are striving to surpass their guests' expectations.

Schneesportschule Omeshorn Alpincenter  
Lech: private instruction

Address: Dorf 443, 6764 Lech am Arlberg

Phone: +43 5583 39880

Internet: [www.alpincenter-lech.at](http://www.alpincenter-lech.at)

Email: [info@alpincenter-lech.at](mailto:info@alpincenter-lech.at)

More Info: daily 8.30 am - noon & 2.00 - 5.00 pm

### **Skischool Exklusiv Berg - Oberlech**

Arlberg and the ski schools of Lech, Oberlech and Zürs make an outstanding combination. On the one hand, there is the fascination of an exceptional ski area and, on the other, a range of ski schools which are striving to surpass their guests' expectations.

Skischool Exklusiv Berg Oberlech: private instruction

Address: Oberlech 455, 6764 Lech am Arlberg  
Phone: +43 664 5408544  
Internet: [www.skitom.com](http://www.skitom.com)  
Email: [info@skitom.com](mailto:info@skitom.com)

### Schneesportschule Wiesele

Arlberg and the ski schools of Lech, Oberlech and Zürs make an outstanding combination. On the one hand, there is the fascination of an exceptional ski area and, on the other, a range of ski schools which are striving to surpass their guests' expectations.

Address: Zürs 74, 6763 Zürs am Arlberg  
Phone: +43 5552 90904  
Internet: [www.schneesportschule-wiesele-zuers.com](http://www.schneesportschule-wiesele-zuers.com)  
Email: [bruno\\_walch@gmx.at](mailto:bruno_walch@gmx.at)

### Tanzcafé Arlberg

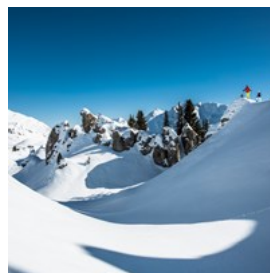


Whether it's swing, boogie, nu-jazz or big band, during the first two weeks of April the sundecks and bars of the elegant Lech and Zürs

hotels will be transformed into stages featuring top musicians performing a variety of genres. This is where nostalgic jazz sounds meet electro beats, where modern pop songs meet vintage music, and where skiers and music lovers become one. Go from making turns on the slopes to turning heads on the dance floor !  
Vintage Music Festival from 1 to 18 April 2019!

Photo: Lech Zürs Tourismus  
Address: Lech Zürs am Arlberg  
Opening hours: 1 to 18 April 2018  
Phone: +43 5583 2161  
Internet: [www.lechzuers.com/tanzcafe-arlberg](http://www.lechzuers.com/tanzcafe-arlberg)  
Email: [info@lech-zuers.at](mailto:info@lech-zuers.at)

### Guided torch-snowshoeing



Every Tuesday and Thursday: On Tuesdays: Guided hike through the Zugertal with torches and hot drinks. Reservation until Monday 04.00

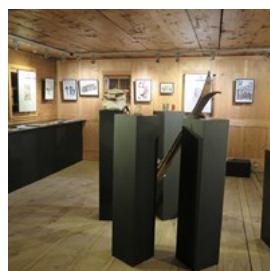
pm

On Thursdays: Guided hike to Oberlech with torches and hot drinks.  
Reservation until Wednesday 04.00 pm

Information and registration: Snow & Fun: +43 6769771880

Photo: Lech Zuers Tourismus by Christoph Schoech  
Phone: +43 6769771880

### Huber-Hus Museum



The Huber-Hus Museum is on the Schlosskopfplatz. The traditional wooden Walserhaus built in 1590 invites you to find out about the life and work of farmers. This year's special exhibition is devoted to the "Dying hours"

Opening hours: Tuesday, Thursday, Sunday from 3 pm to 6 pm

For further information please call: +43 (0)5583 2213-240

### To the museum

Photo: Lech Zürs Tourismus GmbH  
Address: Dorf 26, 6764 Lech am Arlberg  
Opening hours: Tuesday, Thursday, Sunday from 3 pm to 6 pm  
Phone: +43 5583 2213240

Internet: [www.lechmuseum.at](http://www.lechmuseum.at)

### Tannberg Museum



The historic Walser Museum is located in the fire station on the road to Stubenbach. The collection displays objects from dairy farming,

alpine skiing, ecclesiastical folklore, artisanry, animal husbandry, home décor, and textile production.

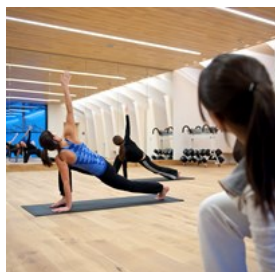
Opening times: From December 28 every Monday and Wednesday from 3 pm to 6 pm. Entry is free / donations welcome. Special guided tours on application.

Walsermuseum Lech-Tannberg | chairwoman Veronika Walch

Phone.: 0+43 (0) 664 24 23 58 | [museumsverein.lech@aon.at](mailto:museumsverein.lech@aon.at)

Photo: Lech Zürs Tourismus GmbH  
Address: Dorf 329, 6764 Lech am Arlberg  
Opening hours: every Monday and Wednesday from 3 pm to 6 pm  
Phone: +43 664 24 23 580  
Email: [museumsverein.lech@aon.at](mailto:museumsverein.lech@aon.at)

### sport.park.lech



We would like to invite you to take a tour and discover the wonderful variety of possible activities guaranteed to enhance your wellbeing.

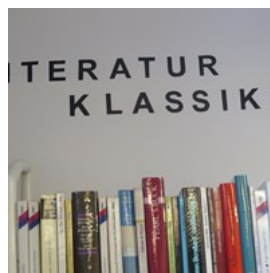
Active, athletic, playful.

We offer you a lot of possibilities which are all about movement. Fitness, cycling, tennis other ball sports (badminton, volleyball, soccer, handball, basketball, ping pong,...), climbing and bouldering as well as wellness area to relax and

the comfy sports lounge cafe.

Photo: Lech Zürs Tourismus\_by Alex Kaiser  
Address: Strass 456, 6764 Lech am Arlberg  
Public Transport: serviced by bus line no. 5 during winter season  
Opening hours: Sunday - Friday: 10am - 11pm, Saturday - 3pm - 11pm  
Phone: +43 5583 41850  
Internet: [www.sport-park-lech.at](http://www.sport-park-lech.at)  
Email: [office@sport-park-lech.at](mailto:office@sport-park-lech.at)

### Library

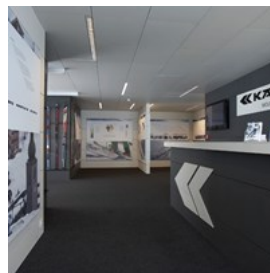


More than 4400 books are available. Come in and have a look. Besuchen Sie uns in der Gemeindebücherei Lech im Servicecenter und tauchen Sie ein in die Welt der Abenteuer.

Mehr als 4400 Bücher stehen Ihnen dabei zur Verfügung!

Photo: Lech Zürs Tourismus  
Address: Dorf 164, 6764 Lech am Arlberg  
Opening hours: Monday 3pm - 5pm, Wednesday 10am - 12 noon & 3pm - 5pm | Friday 3pm - 5pm  
Phone: +43 5583 2213-241

### Kästle Museum



You will find Lech's Kästle Mountain Museum in the top station of the Rüfikopf II cable car. Marvel at historic artwork, ski designs from

bygone times and many other items on display from the history of the successful Austrian ski brand. Open during the Rübahn operating hours.

Photo: Kästle Museum  
Opening hours: Open during the Rübahn operating hours.



### Around the ice



The natural ice rink in Zürs is a particular highlight. You can turn pirouettes and enjoy the view over the surrounding apine

scenery.

For further information and reservation please call: +43 5583 2245

### Ice skating rink in Lech

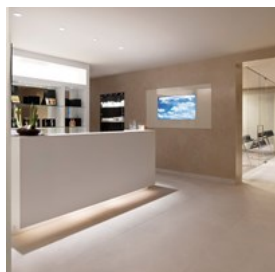
The first and only air-conditioned hotel ice rink in Europe in the Hotel Monzabon offers you 300 square metres of artificial ice for ice skating and curling.

Photo: Lech Zürs Tourismus GmbH

Internet: [www.lechzuers.com/ice-skating-and-curling](http://www.lechzuers.com/ice-skating-and-curling)

Email: [info@lech-zuers.at](mailto:info@lech-zuers.at)

### Aurelio Day-Spa



The Aurelio Day Spa at the Design-Boutique Hotel Aurelio offers exclusive treatments, a gym with personal trainer, an indoor

activity pool (23m in length) as well as a Jacuzzi, an extensive thermal suite with two saunas and a streambath as well as two relaxation areas.

Appointments on request.

Photo: Aurelio

Address: Tannberg 130, 6764 Lech am Arlberg

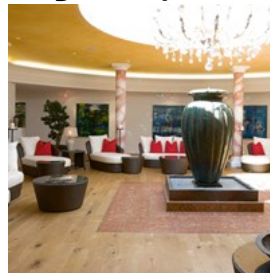
Opening hours: 9 am - 3 pm

Phone: +43 5583 2214

Internet: [www.aureliolech.com](http://www.aureliolech.com)

Email: [office@aureliolech.com](mailto:office@aureliolech.com)

### Burg Vital Spa



vitalSPA with 3.800 m<sup>2</sup> and 900 m<sup>2</sup> sunbathing area The team of qualified, sensitive therapists and experienced trainers,

they have given much thought to maximizing their guests' relaxation and physical and spiritual regeneration during their stay at the Burg Vital Resort.

Appointments on request.

Photo: Burg Vital

Address: Oberlech 568, 6764 Lech am Arlberg

Opening hours: 9 a.m. - 8 p.m.

Phone: +43 5583 3140

Internet: [www.burgvitalresort.com/en/vitalspa](http://www.burgvitalresort.com/en/vitalspa)

### Krone Spa & Beauty



Massages Available at Krone Spa & Beauty Classic, Far-Eastern, Relaxing, Ayurvedic: Time for Wellness in Lech Your spa hotel in Lech, the

Romantic Hotel Krone, offers a peaceful hideaway for all those seeking total relaxation and comfort during your holidays in Lech at the Arlberg Massif. With an extensive selection of massages available: you and your body are in for a luxurious, sensual treat.

Rich cosmetic and facial treatments are at hand in the Krone-SPA & Beauty area of Romantic Hotel Krone, your five star spa hotel in Lech. Sit back, close your eyes and enjoy exceptional beauty treatments for face, neck and décolletage during your spa break in the Arlberg Massif in Austria.

Appointments on request.

Photo: Romantik Hotel Die Krone von Lech  
Address: Dorf 13, 6764 Lech am Arlberg  
Opening hours: Appointments on request.  
Phone: +43 5583 2551  
Internet: [www.romantikhotelkrone-lech.at/en/spa\\_und\\_fitness/spa-fitness.php](http://www.romantikhotelkrone-lech.at/en/spa_und_fitness/spa-fitness.php)

### Post Beauty & Spa



The beauty & spa-complex contains a large sauna-area, a gym with state-of-the-art equipment, an outdoor pool as well as a kids'

pool with numerous attractions.

Appointments on request.

Photo: Hotel Gasthof Post  
Address: Dorf 11, 6764 Lech am Arlberg  
Opening hours: open daily from 9 am - 8 pm  
Phone: +43 5583 2206101  
Internet: [www.postlech.com](http://www.postlech.com)  
Email: [spa@postlech.com](mailto:spa@postlech.com)

### DINING



*Lech Zuers Tourismus*

#### Delicacies for gourmets

Numerous gastronomic awards, the highest density of highly-rated restaurants compared with other international locations, an ambience which emphasises hospitality and epicureanism, the "LöffelWeise" series of gourmet events - the sophisticated mountain village of Lech am Arlberg offers all this. In 2008, it was named

"World Gourmet Village" at the Vöslauer-Falstaff Awards. Its outstanding restaurants attract connoisseurs of good food from all over the world to epicurean flights of fancy at 1,450 metres above sea level and beyond.

More time, more space - time for enjoyment That is the motto that Lech Zürs am Arlberg follows in terms of gastronomy. During the winter season, gourmets are pampered and can experience delicacies of the highest order. "The fact is that there are more and more guests who value Lech and Zürs not just for the pistes, but for the outstanding gastronomy," said Karl Hohenlohe, publisher of the Austrian Gault Millau.

#### Achtele - Das WeinRestaurant

Let us spoil you in our cosy wine restaurant right in the middle of Zug - above the church. It is a pleasure for us to make you tasty, traditional meals with a modern touch. Learn more about the wide variety of Austrian wines - we serve a wide selection of Austrian wines which you can also enjoy by the glass. Wide selection of magnums and double magnums. We will be delighted to welcome you to our wine restaurant from 6.00 pm to 12.00 midnight. Hot food until 11.00 pm. Vegetarian meals available. Closed on Sundays.

Address: Zug 525, 6764 Lech am Arlberg  
Opening hours: from 6.00 pm to midnight, closed on sundays  
Phone: +43 5583 3937  
Internet: [www.staefeli.at/en/achtele.html](http://www.staefeli.at/en/achtele.html)  
Email: [info@staefeli.at](mailto:info@staefeli.at)

#### Allerlei - Krämerei + Genussraum

The Allerlei lures with great shopping and enjoyment!

Cosy coffee stop, tasty delicacies and small

meals, flans and cake specialities, Austrian wines (also by the glass) prosecco + champagne, SCHWIWAGO the wine from the Arlberg and other quality wines are available.

Address: Zug 503, 6764 Lech am Arlberg  
Opening hours: daily from 8.30 am to 6 pm  
Internet: [www.staefeli.at/en/allerlei.html](http://www.staefeli.at/en/allerlei.html)  
Email: [info@staefeli.at](mailto:info@staefeli.at)

### **Almhof Schneider**

"Wunderkammer" and "Restaurant im Almhof Schneider" Contemporary alpine cuisine with traditional Austrian roots. Terrace with grill. A la carte meals from 12.00 noon until 10.00 pm. Light lunches. Fireplace hall with austrian pastries and piano music. Wine bar.

Address: Tannberg 59, 6764 Lech am Arlberg  
Opening hours: À la carte: 12 a.m. - 10 p.m.  
Phone: +43 5583 3500  
Internet: [www.almhof.at/#/en/gastronomy](http://www.almhof.at/#/en/gastronomy)  
Email: [info@almhof.at](mailto:info@almhof.at)

### **Äpele**

At the Äpele we enjoy a pleasant occasion with the most beautiful landscape. An unforgettable trip into the beautiful Zugertal - and alpine cuisine at its best. The Äpele can be reached on foot, Snowshoeing, horse-drawn carriage or with the "Äpele-Snowmobile". 300 years old, in the „Cia Haus“ enjoy simple traditional dishes with special selected ingredients from the local region and a fine selection of Austrian wines. The new tenant Franz-Josef Walch and his team are looking forward to your visit.

Opening hours: Tue-Sun 11 am - 5.30 pm  
Evenings at request. Reservations by phone.

Address: Zug 61, 6764 Lech am Arlberg  
Opening hours: Tue - Sun: 11a.m - 5.30 p.m.  
Phone: +43 5583 3388  
Internet:  
[www.aelpele-lech.at/willkommen-im-gasthaus-aelpele.html](http://www.aelpele-lech.at/willkommen-im-gasthaus-aelpele.html)

Email: [office@aelpele-lech.at](mailto:office@aelpele-lech.at)

### **Alpenblick**

Home-style cooking

Address: Zug 10, 6764 Lech am Arlberg  
Phone: +43 5583 2755

### **Alpenrestaurant Valluga**

Guests at the hotel restaurant are treated the exquisite regional and mediterranean delicacies. In the Alpenrestaurant Valluga's à la carte area, special delicacies with a more international touch are served.

Epicures will find the Alpenhotel Valluga \*\*\*\* offers a complete culinary programme in excellent four-star quality. Aside from the hotel restaurant for half-board hotel guests, the Alpenrestaurant Valluga will start welcoming external guests in the winter season 2015. This new area offers delicious food à la carte. In addition to the restaurant, the terrace, bar, and lounge area have been newly designed.

Guests can expect many home-made products and an exquisite choice of drinks. At lunchtime fast and sophisticated menus are served - ideal for a ski break. The exquisite evening menu is complemented by competent wine tips.

Address: Zürs 280, 6763 Zürs  
Opening hours: Daily from 8 am to 12 midnight  
Phone: +43 5583 2426  
Internet:  
[www.hotel-valluga.com/#!alpenrestaurant-valluga-e/c1yrv](http://www.hotel-valluga.com/#!alpenrestaurant-valluga-e/c1yrv)  
Email: [info@hotel-valluga.com](mailto:info@hotel-valluga.com)

### **Alphorn**

Alpine cosiness, personally charming and enjoyably romantic - that's the Alphorn in Zug. Hearty dishes from the region to tuck into, bubbling fondue dishes and selected wines are waiting for you to try. Your hosts Ingrid and

Heinz Griesser will personally take care of your culinary pampering in a cosy atmosphere. Closed on Tuesdays.

Address: Zug 449, 6764 Lech am Arlberg  
Phone: +43 5583 2750  
Internet: [www.alphorn-zug.at/en/culinary/](http://www.alphorn-zug.at/en/culinary/)  
Email: [info@alphorn-zug.at](mailto:info@alphorn-zug.at)

### **Alpin Vital Hotel**

A restaurant built in the alpine style, with Austrian cuisine and a focus on local produce, 4 different beers on tap, a well-stocked wine cellar with wine served by the glass. Open from 11 am to midnight, hot meals from noon until 10 pm.

Address: Lech 256, 6764 Lech am Arlberg  
Opening hours: 11 a.m. - 12 p.m. Closed on Wednesdays  
Phone: +43 5583 3666  
Internet: [www.alpinvital-lech.at/en/restaurant-2/](http://www.alpinvital-lech.at/en/restaurant-2/)  
Email: [info@alpinvital-lech.at](mailto:info@alpinvital-lech.at)

### **Alter Goldener Berg**

500 Years of Austrian Hospitality in Oberlech, Austria

The traditional restaurant above Lech, by the name of "Alter Goldener Berg" (The Old Gold Mountain) counts amongst one of the most popular restaurants in Lech at the Arlberg.

Hot meals from 11.30 am, invigorating skier specialities for lunch on the sun terrace, après-ski in one of the cosy rooms and fondue and Austrian specialities around the open fireplace in the evening.

We offer documented wine tastings on request.

Live music Tuesday and Thursday from 3 pm.

Address: Oberlech 117, 6764 Lech am Arlberg  
Opening hours: daily from 11:30 am until 1:00 am | dinner until 9:30 pm  
Phone: +43 5583 2205

Internet: [www.goldenerberg.co.uk/alter-goldener-berg.html](http://www.goldenerberg.co.uk/alter-goldener-berg.html)  
Email: [happy@GoldenerBerg.at](mailto:happy@GoldenerBerg.at)

### **Ambrosius**

International and Alpine cuisine, as well as traditional Austrian meals, ice cream specialities, cakes and pastries. Large, comfortable sun terrace, view of the village square, central location in the heart of town, next to the Rüfikopf station. Non-smoking-area.

Address: Rüfi Passage 229, 6764 Lech am Arlberg  
Phone: +43 5583 41930  
Internet: [www.lech4you.com/restaurant-cafe-ambrosius-stube-zentral-in-lech/](http://www.lech4you.com/restaurant-cafe-ambrosius-stube-zentral-in-lech/)  
Email: [info@lech4you.com](mailto:info@lech4you.com)

### **Angelika Kauffmann Parlour**

Art & Gusto at the cosy fireplace

Surrounded by engravings and graphics created by the Bregenzerwald-born co-founder of the Royal Academy in London Angelika Kauffmann you will be delighted by our daily alternating meals.

Every Wednesday classic fondue chinoise or cheese fondue.

Together with our meals enjoy our fine selection of Austrian wines.

An excellent combination of two passions in the Angelika Kauffman parlour: Host Hubert Schwärzler's passion about the visual artist Angelika Kauffmann (1741 - 1807) combined with the passion about cooking of our chef de cuisine.

We look forward to welcoming you - Claudia & Michael Schwärzler  
Chef de cuisine - vita Georg Paar

A grand person from Styra having discovered his love of the Arlberg already at an early stage

Since more than 15 years (and more than 1000 skiing days!) Georg Paar has been contributing a major share to Lech's estimated culinary scenery during wintertime. However, during summertime Georg Paar usually travels around the world with purpose of professional education. Also at the Grand Prix Formula1 Georg Paar had already provided sustenance to the guests of Paddock-Club.

Since three years Georg Paar has been chef de cuisine at Hotel Haldenhof and he is always pampering our guests with his collage of open-minded and traditional culinary ideas.

Address: Tannberg 347, 6764 Lech am Arlberg  
Opening hours: Monday to Friday | 7.00 pm - 9.00 pm  
Phone: +43 5583 24440  
Internet: reservation@haldenhof.at  
Email: www.haldenhof.at/en\_restaurant.html

### **Arlberg**

You are welcome to have something to eat on our sun terrace where we can serve you light meals, hearty Austrian cakes or one of our famous pastries. In the evening you can also enjoy traditional local dishes outdoors, depending on the weather, or in our original Walser room.

Phone: +43 5583 2134  
Internet: www.arlberghotel.at/restaurants-bar/  
Email: info@arlberghotel.at

### **Auerhahn**

In the lovely, original Walser room from the 16th century, we serve you our fondue specialities (cheese - bourguignon - chinoise - chocolate fondue), as well as traditional, local game dishes and hearty cuisine. Our wide range of fine wining and dining is available from 11 am to 11 pm.

Open daily!

Address: Zug 12 6764 Lech am Arlberg  
Opening hours: Daily 11 a.m. - 11 p.m.  
Phone: +43 5583 2754  
Internet: www.auerhahn.co.at  
Email: info@auerhahn.co.at

### **Aurelio**

Inconspicuous elegance, comfort and chic are the backdrop to Austrian and international specialities at Aurelio's Restaurant. The sun terrace, located directly on Schlegelkopf, is the perfect place for a lunchtime snack or a drink with the Lech sunset. You can also enjoy a glass of wine in front of the open fire in our Lounge/Bar.

Address: Tannberg 130, 6764 Lech am Arlberg  
Phone: +43 5583 2214  
Internet: www.aureliolech.com  
Email: reservation@aureliolech.com

### **Backstube Lech**

The small café-confectionery with the special sophistication of typical Lech hospitality. Cakes - strudels - petit fours - gift items. Wholemeal bread and delicious pastries. Breakfast buffet until noon. Exquisite snacks. Sun terrace - wood burning stove. We spoil you daily from 7.45 am until 6 pm.

Address: Omesberg 352 6764 Lech am Arlberg  
Opening hours: daily 7.45 a.m. - 6 p.m.  
Phone: +43 5583 226344  
Internet: www.backstubelech.at/  
Email: martin.walch@backstubelech.at

### **Backstube Zürs**

In the centre of Zürs you can purchase fresh bread, delicious pastries and fresh croissants in our new bakeshop im Posthaus, or treat yourself to a delicious breakfast or some sweet delicacies. We also offer cold and warm snacks for those in between-meal cravings.

Opening hours: Daily from 7.30 a.m. - 4.30 p.m.

Phone: +43 5583 2263825

Internet: [www.backstubelech.at/](http://www.backstubelech.at/)

Email: [martin.walch@backstubelech.at](mailto:martin.walch@backstubelech.at)

### **Backstüble**

Our small stand-up café is perfect for that little snack in between meals, for a scrumptious breakfast or for a quick coffee. Bread made from natural ingredients - fine pastries - strudels - takeaways.

Opening hours: 7 a.m. - 12.30 p.m. & 2.30 p.m. - 5 p.m.

Phone: +43 5583 3084-7

Internet: [www.backstubelech.at/](http://www.backstubelech.at/)

Email: [martin.walch@backstubelech.at](mailto:martin.walch@backstubelech.at)

### **Balmalp**

“Balmalp” - the highlight in Lech. Experience the breathtaking view of the Lech mountains over culinary specialities from the kitchen and the wine cellar. “360° Arlberg meets Asia” daily changing wok dishes as well as pasta and pizza specialities. The Balmalp is the first non-smoking mountain hut in the Alps. Pleasure smokers are warmly welcome in the outdoor bar to the sound of cool music.

Phone: +43 5583 3312

Internet: [www.balmalp.at/](http://www.balmalp.at/)

Email: [balmalp@skiarlberg.at](mailto:balmalp@skiarlberg.at)

### **Berghofstüble, Hotel Der Berghof**

For delightful evenings in a special ambience. Enjoy an exquisite 6-course menu or a fondue evening. Austrian speciality buffets are featured on Thursdays. Hot food is available all day long also on the inviting sun terrace, as well as afternoon tea and cakes and weekly piano evenings.

Phone: +43 5583 2635

Internet:

[www.derberghof.at/Hotel/Restaurant.aspx?lang=en-US](http://www.derberghof.at/Hotel/Restaurant.aspx?lang=en-US)

Email: [info@derberghof.at](mailto:info@derberghof.at)

### **Bergkristall**

Enjoy the marvellous view and the wonderful silence on our sun terrace. Let us spoil you with creative and excellent cuisine. In the evening, we serve numerous gastronomic highlights in our old traditional parlour or at the comfortable fireplace. Fondue evening on Mondays. Fresh fish hearty steaks and pasta. Warm dishes served from 12 am until 3 pm and from 6.30 pm until 10 pm

Address: Oberlech 382, 6764 Lech am Arlberg

Opening hours: 12 a.m. - 3 p.m. and 6.30 p.m. - 10 p.m.

Phone: +43 5583 2678

Internet: [www.bergkristall-lech.at/en/geniesen-auf-hochstem-niveau-eng/](http://www.bergkristall-lech.at/en/geniesen-auf-hochstem-niveau-eng/)

Email: [bergkristall@wrann.at](mailto:bergkristall@wrann.at)

### **Brunnenhof**

Open again after a two-year creative sabbatical: the famous à la carte restaurant in the hotel Brunnenhof - with new ideas and specially balanced ingredients for body, mind and soul. Christine Thaler, head chef Eik Landferman and their team will be delighted to welcome you.

Address: Strass 146, 6764 Lech am Arlberg

Opening hours: Closed on Sunday evening and Monday

Phone: +43 5583 2349

Internet:

[www.brunnenhof.com/cms/front\\_content.php?idcat=25](http://www.brunnenhof.com/cms/front_content.php?idcat=25)

Email: [info@brunnenhof.com](mailto:info@brunnenhof.com)

### **Burg Hotel**

The Burg Hotel is situated right by the slope in Oberlech and invites guests to their famous sun terrace, or the Lechtaler parlour .

Address: Oberlech 266, 6764 Lech am Arlberg

Opening hours: Mun - Sun: 11.30 am - 5 pm and 6.30 pm - 9.30 pm

Phone: +43 5583 22910

Internet: [www.burghotel-lech.com](http://www.burghotel-lech.com)

### **Burg Vital Resort**

Enjoy a light, natural cuisine based on local produce as well as Austrian specialities from 12 noon to 2.30 pm on the peaceful sun terrace.

Wine-lovers can enjoy a large selection of Austrian and international wines from our "old Austrian wine cellar". In the evening, it is our pleasure to pamper you in our à la carte restaurant "Griggeler Stuba", awarded with 3 Gault Millau toques. Closed Saturdays.

Address: Oberlech 568, 6764 Lech am Arlberg  
Opening hours: Closed Saturdays  
Phone: +43 5583 3140  
Internet: [www.burgvitalhotel.com/de/home.aspx](http://www.burgvitalhotel.com/de/home.aspx)  
Email: [office@burgvitalresort.com](mailto:office@burgvitalresort.com)

### **Burgwald**

Wonderful sun terrace, restaurant and "stone pine room" - directly on the ski slope. Typical Austrian dishes, homemade desserts & coffee-specialities served daily from 11 am till 4 pm on. In the evening please make a reservation.

Address: Oberlech 151, 6764 Lech am Arlberg  
Phone: +43 5583 2310  
Internet: [www.petersboden.com/de/startseite/hotel-burgwald/essen/index.htm](http://www.petersboden.com/de/startseite/hotel-burgwald/essen/index.htm)  
Email: [mail@hotelburgwald.com](mailto:mail@hotelburgwald.com)

### **Chesa, Hotel Edelweiß**

In the Edelweiß hotel; international cuisine, Austrian specialities.

Address: Zürs 79, 6763 Zürs  
Phone: +43 5583 2662  
Internet:  
[www.edelweiss-arlberg.at/en/dining-celebrations/chesa](http://www.edelweiss-arlberg.at/en/dining-celebrations/chesa)  
Email: [welcome@edelweiss-arlberg.ocm](mailto:welcome@edelweiss-arlberg.ocm)

### **Crêperie Schüna**

Crêperie Schüna is located right next to Hotel Sonnenburg in Oberlech. Here the finest crêpe are served daily from 11.30 am in a rustic cabin atmosphere.

Address: Oberlech 55, 6764 Lech am Arlberg  
Opening hours: daily from 11.30 am  
Phone: +43 5583 2147  
Internet: [www.sonnenburg.at](http://www.sonnenburg.at)

### **Cresta**

Sporthotel Cresta, Oberlech - 1,700 metres closer to the sky

At Sporthotel Cresta in Oberlech you are definitely "on the top". Experience indulgent moments in a relaxed and cosy atmosphere. Whether you want to unwind in our restaurant or enjoy the panoramic view on the quiet sun terrace - your enjoyment is our success. Thanks to our ideal location - the slope that leads down to Lech is just outside our door - you might also like to stop off for lunch (lunch from 11:30am). At the Cresta we offer you culinary delicacies from wok stir fries, wraps, Vorarlberger Kässpätzle (egg noodles with cheese), soup specialities to exquisite desserts and much more! Our traditional and modern culinary delights are served accompanied by the finest premium wines from Austria and all over the world. Our passion is to serve your every need while holidaying in Oberlech. We offer you a first-class service with a smile.

Address: Oberlech 170, 6764 Lech am Arlberg  
Opening hours: daily from 11:30 a.m.  
Phone: +43 5583 2328  
Internet: [www.cresta.at/en](http://www.cresta.at/en)  
Email: [info@cresta.at](mailto:info@cresta.at)

### **Don Enzo Due Pizzeria**

The only Pizzeria in Arlberg run by an Italian. We will spoil you with culinary delights and wines from various regions of Italy.

Address: Dorf 163, 6764 Lech am Arlberg  
Opening hours: Monday to Sunday 11 a.m. bis 11 p.m.  
Phone: +43 5583 2225

### **Die Ente in Zürs, Hotel Albona Nova**

Treat and surprise yourself in Austria's smallest Gault Millau toque restaurant, not just with different types of duck but especially with exquisite meals of a very special kind. Our "Ente von Zürs" is open daily from 7.00 pm to 10.00 pm. Please make an advanced booking at the hotel Albona Nova.

Address: Zürs 217, 6763 Zürs am Arlberg  
Opening hours: Daily from 7 p.m. - 10 p.m.  
Phone: +43 5583 2341  
Internet: [www.albonanova.at/en/haubenrestaurant-gourmetrestaurant.html](http://www.albonanova.at/en/haubenrestaurant-gourmetrestaurant.html)  
Email: [office@albonanova.at](mailto:office@albonanova.at)

### **Enzianstube, Hotel Enzian**

International cuisine, Austrian specialities, fondue specialities, tartaren hut 11.30 am - 9.00 pm; reservations required in the evening!

Address: Zürs 84, 6763 Zürs am Arlberg  
Opening hours: Daily 11.30 a.m. - 9 p.m.  
Phone: +43 5583 22420  
Internet: [www.hotelenzian.com/](http://www.hotelenzian.com/)  
Email: [office@hotelenzian.com](mailto:office@hotelenzian.com)

### **Flexenhäusl**

At the Flexen Pass, directly on slope No. 10 - Zürser Täli; Fondue specialities, hearty Austrian specialities, home-style cooking.

Address: Zürs 286, 6763 Zürs am Arlberg  
Opening hours: Tue to Sun 11 a.m. - 6 p.m.  
Phone: +43 5583 4143  
Internet:  
[www.edelweiss-arlberg.at/en/bars-lounge/flexenhaeusl](http://www.edelweiss-arlberg.at/en/bars-lounge/flexenhaeusl)  
Email: [welcome@edelweiss-arlberg.at](mailto:welcome@edelweiss-arlberg.at)

### **Formarin**

Our chef will personally take care of your every need.

Our guests are welcome to wind down at the end of the day in the perfect surroundings of our

stylish restaurant. Take a seat at one of our elegantly set tables and allow yourself to be spoiled by our service team. In addition to our ever-changing menu, we can offer you a wide range of fine wines from our own cellar.

Our small dining room, which doubles up as our reading room and guest lounge during the afternoon, is transformed into our "à la Carte" restaurant in the evenings. Here our daytime guests can enjoy the culinary creations of our chef.

Address: Oberlech 255, 6764 Lech am Arlberg  
Opening hours: Daily from 11.30 a.m. - 20.30 p.m. Closed on Mondays  
Phone: +43 5583 2223  
Internet: [www.formarin.com/](http://www.formarin.com/)  
Email: [info@formarin.com](mailto:info@formarin.com)

### **Fritz**

Traditional Austrian à la carte cuisine. Fondue with advance order. Large sun terrace with wonderful view towards the Omeshorn. Own patisserie, kitchen and ice cream specialities. Hot food: lunch menu from 11 a.m. to 3 p.m., afternoon menu from 3 p.m. to 6 p.m., evening menu from 6 p.m. to 9.30 p.m. Enjoy your cigarette in the comfortable "Fasslstube". We are located between the Schwarzwand and the Flühen lifts. Closed on Wednesdays! (except Christmas, New Year's Day and in the Easter week).

Address: Anger 369, 6764 Lech am Arlberg  
Opening hours: 11 a.m. - 9.30 p.m. Closed on Wednesdays  
Phone: +43 5583 2650  
Internet: [www.cafe-fritz.at/tcms/cms/deutsch/cat\\_2/cId\\_2](http://www.cafe-fritz.at/tcms/cms/deutsch/cat_2/cId_2)  
Email: [kontakt@cafe-fritz.at](mailto:kontakt@cafe-fritz.at)

### **FUX Restaurant + Bar + Kultur**

One house - two restaurants! Being spoiled for choice was never so good. Will you go for the award-winning Euro-Asian cuisine or the fine



steakhouse with open charcoal grill? Whatever you choose, you can expect culinary enjoyment in a chic ambience and one of the best wine lists in Austria.

Address: Omesberg 587, 6764 Lech am Arlberg  
Opening hours: Daily from 6 p.m. - 2 a.m.  
Phone: +43 5583 2992  
Internet: [www.fux-mi.net](http://www.fux-mi.net)  
Email: [fux@fux-mi.net](mailto:fux@fux-mi.net)

### **Gitti's Esszimmer**

With only four tables, Gitti's dining room probably is the smallest restaurant in Lech. And that's exactly what it's supposed to be: small but fine!

Gitti's is a very special culinary refuge for the spoiled. Here it's like eating at home, in a private atmosphere. From mid June until the end of September the pots are steaming 4 days a week. The hostess Gitti Strolz prepares seasonal delicacies which can also be served on the big Schmelzhof terrace. The ingredients stem exclusively from the region. The mushrooms from the woodlands around Lech and the fresh fish from the pond in Zug. Here the guests can expect authentic regional cuisine with slight Mediterranean influences. Now be it a candlelight-dinner, a birthday party or wedding celebration in cozy surroundings - at Gitti's dining room it's all a pleasure.

Address: Omesberg 370, 6764 Lech am Arlberg  
Opening hours: Fresh daily specials from 12.30 am - 4.30 pm  
Fondue or dinner from 7.30 pm Closed on Tuesdays  
Phone: +43 5583 37500  
Internet: [www.schmelzhof.com/en/gittis-esszimmer/](http://www.schmelzhof.com/en/gittis-esszimmer/)  
Email: [hotel@schmelzhof.at](mailto:hotel@schmelzhof.at)

### **Goldener Berg, Bergstüberl**

You can order Austrian specialities and the best regional and international cooking daily at the mountain in the Goldener Berg from 11:30 to

17:00, and from 19:00 you can order Austrian classics. Our wine cellar has over 1000 different types of wine from all over the world, and is one of the beststocked in Austria. Day and night, SUMMER and WINTER, we will make your visit to the Goldener Berg unforgettable.

Address: Oberlech 117, 6764 Lech am Arlberg  
Phone: +43 5583 2205  
Internet:  
[www.goldenerberg.co.uk/restaurant-overview-arlberg.html](http://www.goldenerberg.co.uk/restaurant-overview-arlberg.html)  
Email: [happy@goldenerberg.at](mailto:happy@goldenerberg.at)

### **Goldener Berg, Johannesstübli**

Johannisstübli - For decades a Gault Millau toque award-winning restaurant.

We offer menus from Austria and around the world in the gourmet restaurant from 11.30 am to 2.30 pm and from 7 pm to 9 pm, always accompanied with the right wines by the glass. Top produce from local farmers. A cosy restaurant with a gourmet corner on the sun terrace and over 1000 wines from around the world. Documented wine tasting upon advance reservation.

Address: Oberlech 117, 6764 Lech am Arlberg  
Opening hours: Daily from 11.30 a.m. - 2.30 p.m. and from 7 p.m. - 9 p.m.  
Phone: +43 5583 2205  
Internet: [www.goldenerberg.co.uk/johannesstuebli-restaurant-arlberg.html](http://www.goldenerberg.co.uk/johannesstuebli-restaurant-arlberg.html)  
Email: [happy@goldenerberg.at](mailto:happy@goldenerberg.at)

### **Goldener Berg, Sonnenterasse**

From winter 2012/2013 our à la carte guests can experience a whole new atmosphere on the sun terrace of the Goldener Berg: skiers will be indulged with lounge seating, a large grill on the terrace, finest delicacies for the grill with fresh salads, fine soups and starters and popular desserts from our patisserie. Daily (weather permitting) from 11:30 to 17:00.

Address: Oberlech 117, 6764 Lech am Arlberg  
Opening hours: Daily from 11.30 a.m. - 5 p.m.  
Phone: +43 5583 2205  
Internet: [www.goldenerberg.co.uk/bbq-terrace-arlberg.html](http://www.goldenerberg.co.uk/bbq-terrace-arlberg.html)  
Email: [happy@goldenerberg.at](mailto:happy@goldenerberg.at)

### **Guggis**

Austrian cuisine from noon to 2:30 pm. Large quiet sun terrace. Open every day.

Address: Zürs 432, 6763 Zürs am Arlberg  
Opening hours: Zürs 432 6763 Zürs +43 (0)5583 2166  
Phone: +43 5583 2166  
Internet: [www.guggis.at](http://www.guggis.at)  
Email: [info@guggis.at](mailto:info@guggis.at)

### **Hagen's Dorfmetzgerei**

Hagen's Village butchers, right next to the Schlosskopflift has a range of hearty treats! We would love to welcome you, either to our Bistro with national, down-to-earth dishes, or in the shop where you will find meat and sausage products, bacon, and international cheese specialities as well as a choice of the finest Austrian wines and much more. Our opening hours: Monday to Saturday from 08:00 to 19:00.

Address: Dorf 134, 6764 Lech am Arlberg  
Opening hours: Monday to Saturday 8 a.m. bis 7 p.m.  
Phone: +43 5583 2303  
Internet: [www.hagens.at](http://www.hagens.at)  
Email: [office@hagens.at](mailto:office@hagens.at)

### **Hartenfels**

Let yourself be pampered with Austrian and international specialities in our rustic à la carte "Stüberl". Select wines as well as fondues (order in advance). Open all day, hot meals from midday to 2 pm and from 6.30 pm to 9.30 pm. Closed Wednesday

Address: Zug 490, 6764 Lech am Arlberg  
Opening hours: open all-day  
Phone: +43 5583 3104  
Internet: [www.hotel-hartenfels.at/restaurant.php](http://www.hotel-hartenfels.at/restaurant.php)  
Email: [info@hartenfels.at](mailto:info@hartenfels.at)

### **Hotel Hinterwies**

From the ski slopes... At noon ski in - ski out with the Hinterwies lift to enjoy tasty austrian, italien food until 3 pm. In the afternoon take time for a quick beer at the bar, mulled wine on the sun terrace, a snack in the winter garden, a strudel in the ski history hall. Get a cue for your next descent. In the evening take pleasure in a private setting, fondue at the rustic fireplace table, menu or buffet, exquisite wines from the cellar, a delicious cocktail at the bar. From 7 pm to 9 pm. Reservation requested. ... to a delightful treat!

Address: Tannberg 186. 6764 Lech am Arlberg  
Phone: +43 5583 2531-0  
Internet: [www.hinterwies.at/Culinary](http://www.hinterwies.at/Culinary)  
Email: [hotel.hinterwies@lech.at](mailto:hotel.hinterwies@lech.at)

### **Hirlanda**

Family-run hotel for connoisseurs and gourmets; fish specialities, international and local specialities, Austrian specialities. Hot meals from 11.30 am - 10.00 pm. Member of "Chaîne des Rôtisseurs".

Address: Zürs 80 6763 Zürs  
Opening hours: 11.30 a.m - 10 p.m.  
Phone: +43 5583 2262  
Internet: [en.hirlanda.at/culinary-specialities/restaurant-zuers-arlberg](http://en.hirlanda.at/culinary-specialities/restaurant-zuers-arlberg)  
Email: [hotel@hirlanda.at](mailto:hotel@hirlanda.at)

### **Hûs Nr. 8**

The "Hûs Nr. 8" (appr. 300 years old) next to the Filomena supermarket has been restored to its original condition. We'll serve you traditional dishes from old Walser recipes, tempting delicacies of Austrian cuisine; meat and cheese fondue as well as Raclette, hot stone, and roasted duckling (on request). Weekly new speciality menu. Open daily all day, on Mondays from 5 pm.

Address: Omesberg 8, 6764 Lech am Arlberg

Phone: +43 5583 33220  
Internet: [www.hus8.at/](http://www.hus8.at/)  
Email: [husnr8@aon.at](mailto:husnr8@aon.at)

### **Ilga Stüble**

Sun terrace directly on the piste, near the mountain station of the Lech - Oberlech cable car (7.00 am - 1.00 am with ski pass), in the evening you can float on board the cable car to the cosy "Ilga Stüble" or to the "Alte Stube", assorted fondues, raclette (from the original cheese block) and Austrian/international cuisine with organic delicacies from the region. Hot meals served from 11.00 am to 9.30 pm every day.

Non-smoking hotel.

Address: Oberlech 250, 6764 Lech am Arlberg  
Opening hours: Warm meals from 11 a.m. - 9.30 p.m.  
Phone: +43 5583 31210  
Internet: [www.hotel-ilga.at/ilga-stuble.html](http://www.hotel-ilga.at/ilga-stuble.html)  
Email: [info@hotel-ilga.at](mailto:info@hotel-ilga.at)

### **Jägerstube, Hotel Monzabon**

Lunchtimes and evenings, Walserkoscht [food from the Walser Valley], as well as game and international dishes. The tea bar is open in the afternoon, with a selection of tea specialities to enjoy or take away with you. Pure indulgence with gateaux, pastries, biscuits and much more.

Address: Tannberg 228, 6764 Lech am Arlberg  
Phone: +43 5583 21040  
Internet: [www.monzabon.at/](http://www.monzabon.at/)  
Email: [hotel.monzabon@lech.at](mailto:hotel.monzabon@lech.at)

### **Klösterle**

"Klösterle - food and drink in a historic building".  
Fondue and great dishes in a Walser house preserved in its original style in Zug. The classic fondue restaura

Opening hours: Daily 2 p.m. - 5.30 p.m. from 7 p.m. on reservation Closed on Tuesdays  
Phone: +43 5583 3190  
Internet: [www.almhof.at/#/en/home](http://www.almhof.at/#/en/home)

Email: [kloesterle@almhof.at](mailto:kloesterle@almhof.at)

### **Kriegeralpe**

The prettiest alpine hut on the Arlberg is opened both summer and winter. Built in the Tannberg Walser style. From 11 am we offer you local food with outstanding top wines. Enjoy your après-ski in a cosy, romantic hut with lots of fun and laughter.

Opening hours: Open from 11 a.m.  
Phone: +43 664 4422697  
Internet: [www.burghotel-lech.com/en/burg/kriegeralpe.aspx](http://www.burghotel-lech.com/en/burg/kriegeralpe.aspx)  
Email: [info@burghotel-lech.com](mailto:info@burghotel-lech.com)

### **Kristiania**

Gourmet restaurant, open daily from 7:00 a.m., sun terrace, à la carte breakfast, lunch menu, special wine selection - received an award in 2010 from Wine Spectator, Löffelweise Gourmet Events

Address: Omesberg 331, 6764 Lech am Arlberg  
Opening hours: open daily from 7:00 a.m.  
Phone: +43 5583 25610  
Internet: [www.kristiania.at/de/20/restaurant.aspx](http://www.kristiania.at/de/20/restaurant.aspx)  
Email: [info@kristiania.at](mailto:info@kristiania.at)

### **Krone-Stuben**

The snow bar is the legendary après ski meeting point. In the historical Krone-Stuben (daily from 10 a.m. to 11 p.m.) and in the new Panoramasaal (daily at lunch- and tea-time) can you savour delicious Austrian breads/cakes/pastries), Austrian specialities and other delicacies to tempt your palate from the Hauben-Kitchen, accompanied by the finest wines

Address: Lech 13, 6764 Lech am Arlberg  
Opening hours: daily 10 a.m. bis 11 p.m.  
Phone: +43 5583 2551  
Internet: [www.romantikhotelkrone-lech.at/en/dining/krone-stuben-parlour.php](http://www.romantikhotelkrone-lech.at/en/dining/krone-stuben-parlour.php)  
Email: [email@kronelech.at](mailto:email@kronelech.at)

### **Lecher Stube**

Enjoy excellent cuisine and typical Austrian hospitality. Dishes served in traditional pans. Choice wines. Meat and cheese fondue. Menu changes daily. Children's menu. Hot food served from 11.30 am to 10 pm. Home-made strudel and Austrian desserts. Sun terrace sheltered from the wind. Après- Ski!

Opening hours: daily from 11.30 a.m - 10:00 p.m.

Phone: +43 5583 356038

Internet: [www.gotthard.at/de/hotel-lech-arlberg-gotthard/dinner-lecher-stube.php](http://www.gotthard.at/de/hotel-lech-arlberg-gotthard/dinner-lecher-stube.php)

Email: [lecher.stube@aon.at](mailto:lecher.stube@aon.at)

### **Lechtaler Stuben, Burg Hotel**

The no. 1 meeting place on the Arlberg. In our restaurants and bars you will enjoy the high life during the day and have a great time at night. Hot food served from 11.30 am to 5 pm and from 6.30 pm to 9 pm. In the evening fine Austrian and international cuisine as well as different set menus. Member of "Club de la Sommellerie". Inventive, cosy fondue restaurant!

Address: Oberlech 266, 6764 Lech am Arlberg

Phone: +43 5583 2291

Internet:

[www.burghotel-lech.com/en/culinary/lechtaler-stube.aspx](http://www.burghotel-lech.com/en/culinary/lechtaler-stube.aspx)

Email: [info@burghotel-lech.com](mailto:info@burghotel-lech.com)

### **Martinsstüberl, Hotel Tannbergerhof**

Gastronomy all around the clock. Known for our excellent cuisine and nostalgic flair, our rustic style restaurant "Martinstüberl" has become one of the most popular addresses in Lech. At lunchtime and in the afternoon we serve traditional specialities such as Tiroler Gröstel, "Käsknöpfle" and numerous other warm and cold platters, pasta, homemade pastry and cakes. In the evening international and local specialities in a cosy and dignified atmosphere. Please reserve your table in advance.

Address: Dorf 111, 6764 Lech am Arlberg

Phone: +43 5583 2202

Internet: [www.tannbergerhof.at/martin-stueberl.html](http://www.tannbergerhof.at/martin-stueberl.html)

Email: [info@tannbergerhof.com](mailto:info@tannbergerhof.com)

### **Mohnenfluh, Hotel-Restaurant**

The restaurant right on the piste with large sun terrace, chill-out lounge and ice bar. Light, modern cuisine from 11.30 am - 5.30 pm and gourmet evening menus from 7.00 pm - 9.00 pm. Can also be reached by car and the local bus.

Address: Oberlech 507, 6764 Lech am Arlberg

Phone: +43 5583 33110

Internet: [www.mohnenfluh.com/](http://www.mohnenfluh.com/)

Email: [info@mohnenfluh.com](mailto:info@mohnenfluh.com)

### **Montana, Hotel „Zur Kanne“**

Meeting-point for gourmets on the sun terrace; lunch-time: small dishes, salad compositions, seafood, local specialities; dinner: Alsatian specialities and fondues. Tuesday and Thursday large buffet. We indulge you from 11.30 am to 10 pm. „Chaîne des Rotisseurs“

Address: Oberlech 279, 6764 Lech am Arlberg

Opening hours: Daily from 11.30 a.m. - 10 p.m.

Phone: +43 5583 2460

Internet: [www.montanaoberlech.at/en/4-star-superior-deluxe-hotel-in-lech-oberlech-am-arlberg-austria.html](http://www.montanaoberlech.at/en/4-star-superior-deluxe-hotel-in-lech-oberlech-am-arlberg-austria.html)

Email: [hotel@montanaoberlech.at](mailto:hotel@montanaoberlech.at)

### **Murmeli Sporthotel**

Fine Austrian, regional and international cuisine, nice sun terrace, à la carte lunch daily from 12 noon to 2.00 pm, in the evening we serve an excellent menu, reservations recommended.

Address: Oberlech 297, 6764 Lech am Arlberg

Phone: +43 5583 2467

Internet: [www.murmeli.at/en/](http://www.murmeli.at/en/)

Email: [hotel@murmeli.at](mailto:hotel@murmeli.at)

### **Olympia, Cafe-Restaurant**

Pizza - Pasta & Co. The "Olympia" is centrally

located next to the lift station Lech-Oberlech. Visit our cosy café-restaurant or our sun terrasse and enjoy coffee, cakes or typically italien specialties from our kitchen and cellar.

Phone: +43 5583 23115

Internet: [www.hotelolympia.at/28-1-Cafe-Olympia.html](http://www.hotelolympia.at/28-1-Cafe-Olympia.html)

Email: [olympia@hotelolympia.at](mailto:olympia@hotelolympia.at)

### **Omesberg, Gasthof**

Day and evening restaurant with Austrian and international cuisine, afternoon menu, sun terrace. By prior arrangement: Fondue; Car parking, warm dishes till 9 pm.

Phone: +43 5583 2212

Internet: [www.hotel-omesberg.at/english/hotel-omesberg/restaurant-bar.html](http://www.hotel-omesberg.at/english/hotel-omesberg/restaurant-bar.html)

Email: [bucher@omesberg.lech.at](mailto:bucher@omesberg.lech.at)

### **Panoramarestaurant am Rüfikopf**

Breathtaking panoramic view of the mountain scenery at an altitude of 2.350 m, large sun terrace, tile stove. Traditional dishes, Austrian specialties. Events may also be held here in the evening. We turn any event into an unforgettable festivity

Phone: +43 5583 2336278

### **Petersboden, Hotel**

In the heart of Oberlech, right on the piste! Excellent food and drink, fast and friendly service is our top priority. We have a great selection on offer for skiers, gourmets, vegetarians, fussy eaters, teenagers, children, fans of Kaiserschmarrn and Strudel, wine experts and fans of good coffee. We are smoke free in the hotel and in the restaurant with open fire, as well as in the Stüberln (small rooms) - open from 11.00 am to 9.00 pm, smoking is permitted at our umbrella bar - open from 10.00 am to 6.00 pm. From 3.00 pm, cocktail show and

après ski with Lukas and his team. You will love it! Reservations recommended.

Umbrella bar: 10 a.m. - 6 p.m.

Opening hours: Restaurant: 11 a.m. - 9 p.m. Umbrella bar: 10 a.m. - 6 p.m.

Internet: [www.petersboden.com/en/startseite/sporthotel-petersboden/index.htm](http://www.petersboden.com/en/startseite/sporthotel-petersboden/index.htm)

Email: [hotel@petersboden.com](mailto:hotel@petersboden.com)

### **Plattenhof, Hotel**

At lunchtime Austrian cuisine is served until 1.30 p.m. In the afternoon hot snacks, coffee and cakes are available on our peaceful sun terrace that can be reached via the Hinterwies lift on skis. In the evening we serve fondue and selected national and international specialties if booked in advance.

Address: Tannberg 293,6764 Lech

Phone: +43 5583 2522

Internet: [www.plattenhof.com/en/hotel-lech-am-arlberg/hotel-restaurant-lech-plattenhof.html](http://www.plattenhof.com/en/hotel-lech-am-arlberg/hotel-restaurant-lech-plattenhof.html)

Email: [hotel@plattenhof.com](mailto:hotel@plattenhof.com)

### **Post, Hotel Gasthof**

The cuisine is based on regional flavours with the all the best products used in the splendidly inspired order of the courses. Perfect harmony and seasonality form the foundation upon which innovative and delicious taste creations are built.

Address: Dorf 11 6764 Lech am Arlberg

Opening hours: Daily from 7 p.m. - 9 p.m.

Phone: +43 5583 22060

Internet: [www.postlech.com/en-us/enjoying/therestaurants/thepoststuben.aspx](http://www.postlech.com/en-us/enjoying/therestaurants/thepoststuben.aspx)

Email: [info@postlech.com](mailto:info@postlech.com)

### **Restaurant Pfeffermühle in Pfefferkorn's Hotel**

Awarded Restaurant + café with an open fireplace, modern-traditional Austrian cuisine with an international touch and exquisite wines from our own wine bar in an extremely cosy

atmosphere; enjoy fresh cakes and pastries every day from our own patisserie; Sun terrace with panoramic view in the centre of the village, away from it all.

Address: Dorf 138, 6764 Lech am Arlberg  
Phone: +43 5583 2525407  
Internet: [www.pfefferkorns.net/](http://www.pfefferkorns.net/)  
Email: [info@pfefferkorns.net](mailto:info@pfefferkorns.net)

### **Rote Wand, Gasthof**

A pleasure every time - if you want to enjoy Lech, you should go to Zug. In the Gasthof Rote Wand one really dines exquisitely. The menu of this traditional hotel includes fondues à la Rote Wand as well as delights (16 Gault Millau points) that are highly praised by gourmet circles. 2 touque cuisine with seasonal delicacies from the woodland, water and meadow.

Address: Zug 5, 6764 Lech am Arlberg  
Opening hours: 6 p.m. - 9 p.m. | Closed on Sundays  
Phone: +43 5583 3435  
Internet: [www.rotewand.com/en/wining-dining/hotel-restaurant-sommer.html](http://www.rotewand.com/en/wining-dining/hotel-restaurant-sommer.html)  
Email: [gasthof@rotewand.com](mailto:gasthof@rotewand.com)

### **Rud-Alpe**

The "original" hut right on the Schlegelkopf above Lech, with beautiful views of the surrounding snowcovered mountains.

We offer traditional Austrian hospitality, from lunch on the terrace to a romantic candle-light dinner in the cosy, old wooden rooms. Come and enjoy our hearty snacks, delicate cakes and the best of Austrian cuisine. We look forward to seeing you!

Address: Tannberg 185, 6764 Lech am Arlberg  
Phone: +43 5583 418250  
Internet: [rud-alpe@skiarlberg.at](mailto:rud-alpe@skiarlberg.at)  
Email: [www.rud-alpe.at/](http://www.rud-alpe.at/)

### **S'Pfefferkörndl**

Insider restaurant + bar from 11 am - 2 am. Coffee specialities, exquisite wines, the best drinks and cocktails and plenty of fun, 4 different types of beer on tap, trendy international menu with pasta - wok - lava stone and much more, PIZZA till 1 am, après-ski meeting place at the ice bar in the middle of Lech.

Phone: +43 5583 2525429  
Internet: [www.pfefferkorns.net/en/cafe-lech/](http://www.pfefferkorns.net/en/cafe-lech/)  
Email: [info@pfefferkorns.net](mailto:info@pfefferkorns.net)

### **Salome Self Service Restaurant**

Directly situated at the slopes of the Lech-Zürs ski area, the self-service restaurant Salome not only offers delicate provisions for your daily ski trip, but, from its perfect location, also provides an amazing 360 degree panoramic view of the Arlberg mountain world.

Address: Oberlech 49, 6764 Lech am Arlberg  
Opening hours: daily from 10 a.m. - 5 p.m.  
Phone: +43 5583 2306  
Internet: [www.hotel-salome.at/de/hotel-salome/restaurant-und-sb-restaurant.aspx](http://www.hotel-salome.at/de/hotel-salome/restaurant-und-sb-restaurant.aspx)  
Email: [lech@hotel-salome.at](mailto:lech@hotel-salome.at)

### **Schualhus, Rote Wand**

#### **Chef's Table**

Regional delicacies can be enjoyed in the Rote Wand Schualhus. These can be experienced by dropping into very special Jausestuba or by dining at the highest level, at the Chef's Table in Kuchiklub. Monday - Saturday from 7.30 pm (advance reservation)

Jausestuba: Monday - Sunday 10 am - 6 pm.

Address: Zug 5, 6764 Lech am Arlberg  
Opening hours: Jausestuba: Mon - Sun 10 am - 6 pm,  
Kuchiklub Mon - Sat from 7.30 pm  
Phone: +43 5583 3435  
Internet:  
[www.rotewand.com/en/wining-dining/schualhus.html](http://www.rotewand.com/en/wining-dining/schualhus.html)  
Email: [gasthof@rotewand.com](mailto:gasthof@rotewand.com)

### **Schröfli Alm**

Close to the valley station of the Seekopf cable car, this cosy, welcoming listed establishment is over 400 years old. Traditional Austrian cooking. Closed Saturday.

Address: Zürs 74 6763 Zürs  
Opening hours: Closed on Saturdays  
Phone: +43 5583 3345  
Internet: [www.schroeflialm.at/](http://www.schroeflialm.at/)  
Email: [schroefli.alm@iplace.at](mailto:schroefli.alm@iplace.at)

### **Seekopf Restaurant**

Top station Seekopf lift / Zürsersee lift; with table service! Home-style cooking, hearty Austrian specialities, snacks.

Address: Zürs am Arlberg  
Phone: +43 5583 2283230  
Internet: [www.ski-zuers.at/restaurant](http://www.ski-zuers.at/restaurant)  
Email: [restaurant.seekopf@ski-zuers.at](mailto:restaurant.seekopf@ski-zuers.at)

### **Skihütte Schneggarei**

Uncomplicated is the slogan for enjoyment, too. For a relaxing break right next to the slope at lunchtime, a small après-ski refreshment or a cosy supper by the crackling fireplace. Our chefs prepare crispy pizzas from the original wood stove (unique in Lech and Zürs). Kids' meals as well as favourite classics from Austrian and international cuisines. And in the evening enjoy a few drinks at our bar. That's how nice holidays can be. Top-Resort Award: Best Restaurant 2006. Open from 12 noon until 1 am.

Address: Tannberg 629, 6764 Lech am Arlberg  
Opening hours: Daily from 12 a.m. - 1 a.m.  
Phone: +43 5583 39888  
Internet: [www.schneggarei.at/](http://www.schneggarei.at/)  
Email: [info@schneggarei.com](mailto:info@schneggarei.com)

### **Sonnenburg, Hotel**

The stronghold of hospitality. A meeting place for connoisseurs. At lunch time: delicious morsels and pasta dishes. Wonderful sweet or

savoury crêpes in the "Crêperie"! In the evening: sophisticated dining and drinking in the restaurant or in the famous "Schüna" (barn). Member of the "Chaîne des Rotisseurs" and the fraternity "La Confrérie des Chevaliers du Tastevin".

Address: Oberlech 55, 6764 Lech am Arlberg  
Phone: +43 5583 2147  
Internet: [www.sonnenburg.at/culinary-hotel-arlberg.html](http://www.sonnenburg.at/culinary-hotel-arlberg.html)  
Email: [hotel@sonnenburg.at](mailto:hotel@sonnenburg.at)

### **Stülzis, Hotel Café**

Address: Omesberg 312, 6764 Lech  
Phone: +43 5583 2471  
Internet: [www.stuelzis.com/en/home/](http://www.stuelzis.com/en/home/)  
Email: [hotel@stuelzis.com](mailto:hotel@stuelzis.com)

### **Thurnhers Alpenhof**

For years this has been known as one of the best restaurants in Austria with light international and Austrian cuisine. Excellent service in a wonderful environment with a breathtaking view of the mountains.

Address: Zürs 295, 6763 Zürs  
Opening hours: Daily from 12 a.m. - 2 p.m. and from 7.30 p.m. - 9.30 p.m.  
Phone: +43 5583 2191  
Internet: [www.thurnhers.com/en/hotel-alpenhof-zuers-arlberg/restaurant-bar/](http://www.thurnhers.com/en/hotel-alpenhof-zuers-arlberg/restaurant-bar/)  
Email: [mail@thurnhers-alpenhof.com](mailto:mail@thurnhers-alpenhof.com)

### **Thurnher's Milchbar**

The Lifestyle-Cafe at the Arlberg, right by the Zürserseelift. A trendy atmosphere, modern but comfortable with lounge music serving coffee specialities, milchshakes, speciality bread and many other delicious things.

Opening hours: Daily from 8 a.m. - 8 p.m.  
Phone: +43 5583 419708  
Internet: [www.thurnhers.com/en/milchbar/](http://www.thurnhers.com/en/milchbar/)  
Email: [mail@thurnhers-alpenhof.com](mailto:mail@thurnhers-alpenhof.com)

### **Trittalpe**

Located at the Hexenboden; home-style cooking, hearty Austrian cuisine and specialities. The sun terrace of Zürs, meeting point of pleasantness.

New: big snow bar with DJ.

Phone: +43 5583 2831

### **Toni's Einkehr**

Fondue specialities, home cooking, Austrian specialities.

Opening hours: 11.30 a.m. - 6 p.m. and from 7.30 p.m.

Phone: +43 5583 224347

Internet: [www.flexen.com/en/index.htm](http://www.flexen.com/en/index.htm)

Email: [hotel@flexen.com](mailto:hotel@flexen.com)

### **ULLR**

Right in the heart of Zürs is the ULLR with its shabby chic look: home cooking and new creations using regional produce, through to vegan cuisine. Off with lederhosen and dusty guest rooms and in with casual chic. Cool meets old world.

Bar fly meets aficionado. Noisy meets quiet. Fashionable meets trashy. Star meets starlet. Dolce vita meets laissez-faire. Unusual meets unique - in the ULLR.

Address: Zürs 110, 6763 Zürs

Phone: +43 6769262443

Internet: [www.ullr.at](http://www.ullr.at)

Email: [gasthouse@ullr.at](mailto:gasthouse@ullr.at)

### **Walserstube, Hotel Arlberghaus**

The best pizza for miles around: on the first floor of our restaurant, enjoy good Austrian cuisine or our famous fantastic pizza. Friendly service and an interesting wine list complete the experience.

Address: Zürs 126, 6763 Zürs

Phone: +43 5583 2258504

Internet: [www.arlberghaus.com/en/restaurant-pizzeria-walserstube-lech-zuers.html](http://www.arlberghaus.com/en/restaurant-pizzeria-walserstube-lech-zuers.html)

Email: [skihotel@arlberghaus.com](mailto:skihotel@arlberghaus.com)

### **Zürserhof**

International Cuisine, Austrian Cuisine

Address: Zürs 75 6763 Zürs

Phone: +43 5583 2513

Internet: [www.zuerserhof.at/de/kulinarik](http://www.zuerserhof.at/de/kulinarik)

Email: [hotel@zuerserhof.at](mailto:hotel@zuerserhof.at)

### **CAFES**



*Lech Zuers Tourismus by Hans Wiesenhofer*

Lech Zürs is the perfect place to enjoy a hot chocolate and a apple strudel in the slopes or maybe something nice to drink downtown.

### **Allerlei – Krämerei + Genussraum**

Our dairy with its tasting room in Zug provides you with enticing culinary and decorative gifts, presents and daily provisions (local supplier). Enjoy a coffee and cake, as well as tasty snacks and our house speciality "Flammkuchen" (tarte flambée). SCHIWAGO - the Arlberg wine, available from us. Visit us and spoil yourself, while enjoying the wonderful view over the Madloch.

Address: Zug 503 6764 Lech am Arlberg

Opening hours: Open from 8.30 am to 6 pm.

Phone: +43 664 5398274

Internet: [www.staefeli.at/en/allerlei.html](http://www.staefeli.at/en/allerlei.html)

Email: [info@staefeli.at](mailto:info@staefeli.at)

### **Backstube Lech**

The small café-confectionery with the special sophistication of typical Lech hospitality. Cakes -



strudels – petit fours – gift items. Wholemeal bread and delicious pastries. Breakfast buffet until noon. Exquisite snacks. Sun terrace – wood burning stove. We spoil you daily from 7.45 am until 6 pm.

Address: Omesberg 352, 6764 Lech am Arlberg  
Opening hours: daily 7.45 a.m. – 6 p.m.  
Phone: +43 5583 226344  
Internet: [www.backstubelech.at/](http://www.backstubelech.at/)  
Email: [martin.walch@backstubelech.at](mailto:martin.walch@backstubelech.at)

### **Backstüble**

Our small stand-up café is perfect for that little snack in between meals, for a scrumptious breakfast or for a quick coffee. Bread made from natural ingredients – fine pastries – strudels – takeaways.

Address: Dorf 199, 6764 Lech am Arlberg  
Opening hours: 7 a.m. – 12.30 p.m. & 2.30 p.m. – 5 p.m.  
Phone: +43 5583 30847  
Internet: [martin.walch@backstubelech.at](mailto:martin.walch@backstubelech.at)  
Email: [martin.walch@backstubelech.at](mailto:martin.walch@backstubelech.at)

### **Backstube Zürs**

In the centre of Zürs you can purchase fresh bread, delicious pastries and fresh croissants in our new bakeshop im Posthaus, or treat yourself to a delicious breakfast or some sweet delicacies. We also offer cold and warm snacks for those in between-meal cravings.

Opening hours: Daily from 7.30 a.m. – 4.30 p.m.  
Phone: +43 5583 2263825  
Internet: [www.backstubelech.at/](http://www.backstubelech.at/)  
Email: [martin.walch@backstubelech.at](mailto:martin.walch@backstubelech.at)

### **Baristro**

We would love to welcome you to our new Cafe, Bar, Bistro; in the heart of Lech. We offer: Coffee to Go, Smoothies and Greenies to Go, Cocktails, etc. In the morning: Breakfast, brunch; afternoons: tappas, salads and soups.

Address: Ambrosiuspassage, Lech am Arlberg  
Opening hours: Mon – Sun 8.00 am – 9.00 pm  
Phone: +43 664 1234 567  
Internet: [www.baristro.at](http://www.baristro.at)  
Email: [hello@baristro.at](mailto:hello@baristro.at)

### **Café Fritz**

Traditional Austrian à la carte cuisine. Fondue and Raclette with advance order. Large sun terrace and own patisserie. Hot food: lunch menu from 11.00 am to 3.00 pm, afternoon menu from 3.00 pm to 6.00 pm, evening menu from 6.00 pm to 9.30 pm. Enjoy your cigarette in the comfortable "Fassstube". Closed on Wednesdays! (except Christmas, New Year's Day and in the Easter week).

Address: Anger 369, 6764 Lech am Arlberg  
Opening hours: 11 a.m. – 9.30 p.m. Closed on Wednesdays  
Phone: +43 5583 2650  
Internet: [www.cafe-fritz.at/tcms/cms/deutsch/cat\\_2/cId\\_2](http://www.cafe-fritz.at/tcms/cms/deutsch/cat_2/cId_2)  
Email: [kontakt@cafe-fritz.at](mailto:kontakt@cafe-fritz.at)

### **Klösterle**

"Klösterle – food and drink in a historic building". Fondue and austrian specialities in a Walser house preserved in its original style in Zug. The classic fondue rest aurant. Open from 2.00 to 5.30 pm, from 7.00 pm on reservation. Closed Tuesday.

6764 Lech am Arlberg  
+43 (0)5583 3190  
[kloesterle@almhof.at](mailto:kloesterle@almhof.at)  
[www.almhof.at/#/en/home](http://www.almhof.at/#/en/home)

Opening hours: Open from 2.00 to 5.30 pm, from 7.00 pm on reservation. Closed Tuesday.  
Phone: +43 5583 3190  
Internet: [www.almhof.at/#/en/home](http://www.almhof.at/#/en/home)  
Email: [kloesterle@almhof.at](mailto:kloesterle@almhof.at)

### **Gasthof Post, Kutscherstube**

Opening times 10 am to 10 pm. We serve Austrian culinary delicacies in our "inn". Beef

carpaccio in horseradish and chive sauce with root vegetables and pumpkin seed oil, suckling calf Wiener schnitzel with parsley potatoes, Kaiserschmarren (shredded pancakes) with stewed plums, and also a wide selection of wines by the glass.

Address: Dorf 11 6764 Lech am Arlberg  
Opening hours: 10 a.m. - 1 p.m.  
Phone: +43 5583 22060  
Internet: [www.postlech.com/en-us/enjoying/therestaurants/thepoststuben.aspx](http://www.postlech.com/en-us/enjoying/therestaurants/thepoststuben.aspx)  
Email: [info@postlech.com](mailto:info@postlech.com)

### **Thurnher's Milchbar**

The Lifestyle-Cafe at the Arlberg, right by the Zürserseelift. A trendy atmosphere, modern but comfortable with lounge music serving coffee specialities, milchshakes, speciality bread and many other delicious things.

Address: Zürs am Arlberg  
Opening hours: Daily from 8 a.m. - 8 p.m.  
Phone: +43 5583 419708  
Internet: [www.thurnhers.com/en/milchbar](http://www.thurnhers.com/en/milchbar)  
Email: [mail@thurnhers-alpenhof.com](mailto:mail@thurnhers-alpenhof.com)

## **BARS & NIGHTLIFE**



*LechZuersTourismus*

There is a big variety of sports shops, souvenir and fashion shops in Lech Zürs am Arlberg.

### **Schirmbar Petersboden**

Daniela, Stefan and Nora care for your every need: craft coffee made on a La Marzocco,

cocktails, cool sounds, fabulous food choices from our restaurant, hot chocolate with milk with milk from farmers from Lech, mulled wine, draft beer and more. Ski in and chill out.

Free WiFi  
non-smoking bar

Address: Oberlech 278, 6764 Lech am Arlberg  
Opening hours: 10 a.m. - 6 p.m.  
Phone: +43 5583 3232  
Internet: [www.petersboden.com](http://www.petersboden.com)

### **Tannberger Bar**

Right in front of Hotel Tannbergerhof, at the very center of Lech, the best open air party at the legendary ice bar awaits the guests of Lech each day - one of the après-ski locations in Lech.

Address: Dorf 111, 6764 Lech am Arlberg  
Opening hours: daily from 11.30 a.m.  
Phone: +43 5583 2202

### **Archivbar**

Right in the centre of Lech by the Rüfibahn, in the Rüfipassage is where the party's on until the morning light. Archivbar still is a place where everyone's welcome and where the best party in Lech is guaranteed.

Address: Rüfipassage 229, 6764 Lech am Arlberg  
Opening hours: open daily from 9 p.m.  
Phone: +43 5583 419300

### **Krone Bar**

The Romantic Hotel Krone's Après ski motto is 'quality not quantity' and that is apparent when entering the Sun Terrace which is home to the stylish Après ski Ice Bar hosted by the Lech hotel. Enjoy exquisite rosé champagne, a fine cigar or a warming cognac in the beautiful and traditional surroundings. Watch skiers finish the last runs of the day right in the heart of Lech.

Address: Dorf 13, 6764 Lech am Arlberg

Phone: +43 5583 2551

Internet: [www.romantikhotelkrone-lech.at/en](http://www.romantikhotelkrone-lech.at/en)

### **K.CLUB**

Dance the Night away: K.Club, Popular & Stylish Clubbing Address in Lech at the Arlberg  
Lech is not your standard ski resort. Instead of Alpine chalets you will find gourmet restaurants scattered all round the stylish Austrian ski resort. Music and entertainment can be found aplenty. And once the night life awakes, it's time to head to the K.club, the most exclusive clubbing address in Lech, for an evening of dancing, music and socialising. The K.club is found at the Romantic Hotel Krone, your five star hotel, which is located in the heart of Lech and is well-known as an exclusive night-time spot in Lech.

Address: Dorf 13, 6764 Lech am Arlberg

Opening hours: open daily from 10 p.m.

Phone: +43 5583 2551

### **The Blaue Bar**

The Blaue Bar (blue bar) is one year old but it seems like a scenery from a beautiful old classic film. The Blaue Bar is a truly stylish bar. Here honest craft still counts.

Address: Omesberg 370, 6764 Lech am Arlberg

Opening hours: open daily until 1 a.m., Tuesday closing day

Phone: +43 5583 37500

Internet: [www.schmelzhof.at](http://www.schmelzhof.at)

### **Pepper's Lounge**

It basically is the succesful big-city combination yet at the Arlberg: restaurant, bar, shisha lunge - with cool drinks, classic and exciting cocktail creations, selected wines and delicious cuisine from the far East.

Address: Dorf 138, 6764 Lech am Arlberg

Opening hours: Tue - Sun: 6 p.m. - 2 a.m.

Phone: +43 5583 25250

Internet: [www.pfefferkorns.net](http://www.pfefferkorns.net)

### **The Cottage**

At the heart of Lech, traditionsteeped Tannbergerhof welcomes guests with stylish ambience and alpine charm. Just one floor below you'll find yourself transpoted to Ireland. The new meeting place in Lech is called The Cottage and presents itself with great mood, a comfy atmosphere and authentic Irish Pub flair.

Address: Dorf 111, 6764 Lech am Arlberg

Opening hours: Tue - Sun: 5 p.m. - 3 a.m.

Phone: +43 5583 2202

Internet: [www.tannbergerhof.at](http://www.tannbergerhof.at)

### **Vernissage**

The Vernissage, which was opened by Micky SChönhofer in 1991, dominated the Arlberg's nightlife for the pasdt 20 years. Be it staff or monarch, all kinds of nightflies have gathered here night after night.

Address: Haus 82, 6763 Zürs am Arlberg

Opening hours: open daily from 9 p.m.

Phone: +43 676 7880287

Internet: [www.bar-vernissage.at](http://www.bar-vernissage.at)

### **Skihütte Schneggarei**

At night you're welcome to come and have a few drinks at the bar.

Address: Tannberg 629, 6764 Lech am Arlberg

Phone: +43 5583 39888

Internet: [www.schneggarei.at](http://www.schneggarei.at)

### **Zürserl**

The zürserl at hotel Edelweiss is an institution in Arlberg nightlife. And this is going to change anytime soon. Because that kind of hotspots - and especially legendary ones - are not found at every corner, even around the Arlberg.

Address: Zürs 79, 6763 Zürs am Arlberg

Opening hours: Tue - Sun: 10 p.m. - 3 a.m.

Phone: +43 5583 2662  
Internet: [www.zuerserl.net](http://www.zuerserl.net)

## SHOPPING



LechZuersTourismus

### Allerlei – Krämerei + Genusraum

gifts, accessoires, groceries, newspapers and tobacco products

Address: Zug 525, 6764 Lech am Arlberg  
Opening hours: 8.30 a.m. - 6 p.m.  
Phone: +43 664 5398274  
Internet: [www.staefeli.at/en/grocery-store.html](http://www.staefeli.at/en/grocery-store.html)

### Annemaries Bluenstube

Flowers, gifts, souvenirs

Address: Hnr. 268, 6764 Lech am Arlberg  
Phone: +43 5583 2401

### B.ART

gifts, accessoires

Address: Omesberg 541, 6764 Lech am Arlberg  
Opening hours: 12 a.m. - 4 p.m.  
Phone: +43 664 1229923

### Blumen Kopf

flowers

Address: Dorf 11, 6764 Lech am Arlberg  
Opening hours: Mon - Fri: 9.30 a.m. - 12.30 a.m. & 2 p.m. - 5.30 p.m., Sat: 9.30 a.m. - 7 p.m., Sun: 3 p.m. - 7 p.m.  
Phone: +43 5583 41852

### Boutique and Juwelenstub'

gifts, accessoires

Address: Tannberg 187, 6764 Lech am Arlberg  
Opening hours: 9.30 a.m. - 6.30 p.m.  
Phone: +43 5583 21340  
Internet: [www.arlberghotel.at/en/service/boutique/](http://www.arlberghotel.at/en/service/boutique/)

### Boutique Little Dream

books, gifts and accessoires

Address: Zürs 295, 6763 Zürs am Arlberg  
Opening hours: 8 a.m. - 10 p.m.  
Phone: +43 5583 2191

### Juwelier Bretterbauer

Jewellery, watches

Address: Tannberg 409 6764 Lech  
Opening hours: 10 a.m. - 7 p.m.  
Phone: +43 5583 41977

### C.r.a.f.t

Opening hours: Monday to Saturday 10.00 a.m. - 7.30 p.m.,  
Sunday 2 p.m. - 7.30 p.m.  
Phone: +43 5583 30827

### Erika's Shop

groceries, gifts, accessoires, drugstore, fashion, ethnic fashion, tobacco products, newspaers

Address: Zürs 126, 6763 Zürs  
Opening hours: Mon - Sat: 8.30 a.m. - 12.30 a.m. & 2.30 p.m. - 6 p.m., Sun: 8.30 a.m. - 10.30 a.m. & 3 p.m. - 5 p.m.  
Phone: +43 5583 2258 507

### Feinpostladen

gifts, accessoires

Address: Dorf 11, 6764 Lech am Arlberg  
Opening hours: on request  
Phone: +43 5583 2206  
Internet: [www.postlech.com/index.php?lang=en](http://www.postlech.com/index.php?lang=en)

### **Friendly Brändle Ski-Shop-Rent**

Address: Zürs 437,6763 Zürs am Arlberg  
Phone: +43 5583 3079  
Internet: [www.sportbraendle.at](http://www.sportbraendle.at)

### **Friendly Brändle Ski Sport Mode** fashion, ethnic fashion, sportswear

Address: Zürs 493, 6763 Zürs am Arlberg  
Opening hours: Mon - Sat: 9 a.m. - 1 p.m. & 3 p.m. - 7 p.m.,  
Sun 9 a.m. - 11 a.m. & 3 p.m. - 6.30 p.m.  
Phone: +43 5583 2660

### **Friendly Brändle Ski Sport Mode** sportswear

Address: Oberlech 266, 6764 Lech am Arlberg  
Opening hours: 9 a.m. - 12.30 p.m. & 2.30 p.m. - 6 p.m.  
Phone: +43 5583 2291720

### **Genuss-Art Plangger** wine, food, souvenirs

Address: Haus Nr.: 196, 6764 Lech am Arlberg  
Phone: +43 664 48 49 606

### **Hagen's Dorfmetzgerei** groceries

Address: Dorf 134, 6764 Lech am Arlberg  
Opening hours: Mon - Sat: 8 a.m. - 7 p.m.  
Phone: +43 5583 2303

### **Huber Uhren Schmuck**

Address: Dorf 115, 6764 Lech am Arlberg  
Opening hours: Mon - Sat: 9.30 a.m. - 12.30 a.m., 2 p.m. - 7  
p.m. Sun: 3 p.m. - 7 p.m.  
Phone: +43 5583 3737

### **Konrad's Wood Carving** gifts and accessoires

Address: Filomenapassage, Lech am Arlberg

Opening hours: Mon - Fri: 9 a.m. - 6 p.m., Sat: 9 a.m. - 12  
a.m.  
Phone: +43 664 4353675

### **HYPO Bank Lech**

Address: Dorf 138, 6764 Lech am Arlberg  
Opening hours: 8 - 12 a.m. & 2.30 p.m. - 5.30 p.m.  
Phone: +43 50 414 3875

### **Lenai & Linai** gifts, accessoires, fashion and ethnic fashion

Address: Dorf 163, 6764 Lech am Arlberg  
Opening hours: Mon - Sat: 10 a.m. - 1 p.m. & 3 p.m. - 7 p.m.  
Sun: 3 p.m. - 7 p.m.  
Phone: +43 5583 40080  
Internet: [www.lenai-linai.at/](http://www.lenai-linai.at/)

### **Palmers** Fahion

Address: Filomenapassage, Lech am Arlberg  
Opening hours: 9 a.m. - 6.30 p.m.  
Phone: +43 664 6114280

### **Peppino - Kids Boutique**

Address: Dorf 329, 6764 Lech am Arlberg  
Opening hours: Mon - Sat: 9 a.m. - 12.30 p.m. & 2.30 p.m. -  
6.30 p.m., Sun: 4 p.m. - 6.30 p.m.  
Phone: +43 5583 40087  
Internet: [www.sporthaus-pfefferkorns.net/en/peppino-kids-bo-utique.html](http://www.sporthaus-pfefferkorns.net/en/peppino-kids-bo-utique.html)

### **Pfefferkorn's Geschenkeboutique** gifts, accessoires, tobacco products and newspapers

Address: Dorf 138, 6764 Lech am Arlberg  
Opening hours: Mon - Sat: 8.30 a.m. - 7 p.m., Sun 2 p.m. - 7  
p.m.  
Phone: +43 5583 2525417

**Pfefferkorn's Parfümerie**  
drugstore

Address: Dorf 138, 6764 Lech am Arlberg  
Opening hours: Mon - Sat: 8.30 a.m. - 7 p.m., Sun: 2 p.m. - 7 p.m.  
Phone: +43 5583 2525 417

**Pfefferkorn's supermarket**  
supermarket, groceries

Address: Dorf 138, 6764 Lech am Arlberg  
Opening hours: Mon - Sat: 8.30 a.m. - 7 p.m., Sun: 2 p.m. - 7 p.m.  
Phone: +43 5583 2525 415

**Raum & Einrichtung**  
gifts, accessoires

Address: Omesberg 461, 6764 Lech am Arlberg  
Opening hours: Mon - Fri: 3 p.m. - 5 p.m.  
Phone: +43 5583 35200

**Raiffeisenbank Lech**

Address: Dorf 90, 6764 Lech  
Opening hours: Mon - Fri: 8.30 a.m. - 12 a.m. & 2.30 p.m. - 5.30 p.m.  
Phone: +43 5583 2626  
Internet: [www.lechbank.com](http://www.lechbank.com)

**Sagmeister Boutique - Der Mann**

Address: Tannberg 228, 6764 Lech am Arlberg  
Opening hours: Mon - Sat: 9.30 a.m. - 12.30 a.m., 2.30 p.m. - 7 p.m., Sun: 3 p.m. - 7 p.m.  
Phone: +43 5583 40022

**Sagmeister Boutique - Die Frau und Der Mann**

Address: Dorf 11, 6764 Lech am Arlberg  
Opening hours: Mon - Sat: 9.30 a.m. - 1 p.m., 2.30 p.m. - 7 p.m., Sun: 3 p.m. - 7 p.m.  
Phone: +43 5583 22060

**Sagmeister Trend - Die Frau**

Address: Dorf 11, 6764 Lech am Arlberg  
Opening hours: Mon - Sat: 9.30 a.m. - 1 p.m. & 2.30 p.m. - 7 p.m., Sun: 3.00 p.m. - 7 p.m.  
Phone: +43 5583 41833

**Sagmeister Style - Die Frau**

Address: Dorf 12, 6764 Lech am Arlberg  
Opening hours: Mon - Sat: 9.30 a.m. - 1 p.m. & 2.30 p.m. - 7 p.m., Sun: 3.00 p.m. - 7 p.m.  
Phone: +43 5583 40053

**Skibex**  
sports articles

Address: Dorf 487, Lech am Arlberg  
Opening hours: 8.30 a.m. - 6 p.m.  
Phone: +43 5583 297070

**Ski Suit Rental**  
sportswear

Opening hours: on request  
Phone: +43 699 11262626  
Internet: [www.skisuitrental.com](http://www.skisuitrental.com)

**SPAR supermarket**  
supermarket, groceries, tobacco, newspapers  
and flowers

Address: Omesberg 211, 6764 Lech am Arlberg  
Opening hours: Mon - Sat: 7.30 a.m. - 7 p.m., Sun: 2 p.m. - 6 p.m.  
Phone: +43 5583 2557

**Sparkasse Lech**

Address: HNr. 352 6764 Lech  
Opening hours: Mon - Fri.: 8.30 a.m. - 12 a.m. & 2 p.m. - 4 p.m.  
Phone: +43 50 100 77 802

### **Speckstube**

groceries

Address: Omesberg 8, 6764 Lech am Arlberg  
Opening hours: Mon- Thu: 9 a.m. - 6 p.m., Fri: 9 a.m. - 7 p.m.,  
Sat&Sun: 9 a.m. - 5 p.m.  
Phone: +43 5583 2730

### **Sportalp Waldhart**

sportswear, sports article, fashion, ethnic fashion

Address: Tannberg 409, 6764 Lech am Arlberg  
Opening hours: 8.30 a.m. - 7.30 p.m.  
Phone: +43 5583 2110  
Internet: [www.sportalp.at](http://www.sportalp.at)  
Email: [waldhart@sportalp.at](mailto:waldhart@sportalp.at)

### **Sporthaus Strolz**

fashion, ethnic fashion, sports articles,  
sportswear, tobacco products, newspapers, gifts  
,accessoires

Address: Lech am Arlberg  
Opening hours: Mon - Sat 08.45 a.m. - 12.30 a.m. & 2  
p.m.-6.30 p.m. Sun 3 p.m. - 6.30 p.m.  
Phone: +43 5583 2361  
Internet: [www.strolz.at/en/sport-mode](http://www.strolz.at/en/sport-mode)  
Email: [office@strolz.at](mailto:office@strolz.at)

### **Sporthaus Pfefferkorn's**

Address: Dorf 180, 6764 Lech am Arlberg  
Opening hours: Mon - Sat: 8.30 a.m. - 6 p.m., Sun: 8.30 a.m. -  
12 a.m. & 4 p.m. - 6.30 p.m.  
Phone: +43 5583 2224  
Internet: [www.sporthaus-pfefferkorns.net/en/sportshop-pfefferkorns-in-lech.html](http://www.sporthaus-pfefferkorns.net/en/sportshop-pfefferkorns-in-lech.html)

### **Sporthaus Zürs**

Strolz Sports Store Zürs: Shop, Rent a Ski and  
Ski servicing

Located opposite the Alpenrose club, between  
the Hotel Arlberghaus and the Hotel Hirlanda.

sportswear, sports article, gifts, accessories

Address: Zürs 205, 6763 Zürs am Arlberg  
Opening hours: 8.30 a.m. - 6 p.m.  
Phone: +43 5583 3555  
Internet: [www.strolz.at/en](http://www.strolz.at/en)

### **Stilvoll Walch**

Address: Zug 503, 6764 Lech am Arlberg  
Opening hours: 8 a.m. - 6 p.m.  
Phone: +43 664 5398274

### **Strolz - Filomena**

Lech-Filomena: Ski- and Cross-country ski hire,  
servicing and lockers

Located below the Filomena Spar supermarket  
(downstairs) on the outskirts of Lech opposite  
the Sparkasse bank and the Hotel Gotthard.

Address: Omesberg 211, 6764 Lech am Arlberg  
Opening hours: 8.30 a.m. - 6.30 p.m.  
Phone: +43 5583 2361 179  
Internet: [www.strolz.at/en](http://www.strolz.at/en)  
Email: [office@strolz.at](mailto:office@strolz.at)

### **Strolz - Rüfiplatz**

Stuff in Lech: Snowboard- and Freerideshop,  
Rent a Ski, Board servicing

Located next to the lower terminus of the  
Rüfikopf cable car  
on Rüfikopfplatz in the Ambrosius Passage.

Address: Rüfiplatz, 6764 Lech am Arlberg  
Opening hours: 8.30 a.m. - 6 p.m.  
Phone: +43 5583 2361 179  
Internet: [www.strolz.at/en](http://www.strolz.at/en)  
Email: [office@strolz.at](mailto:office@strolz.at)

### **Strolz - ski service**

Lech centre: Rent a Ski, Servicing and lockers

Located opposite the Strolz sport & fashion store  
and next to the Hotel Arlberg.

Opening hours: 8.30 a.m. - 6 p.m.

Phone: +43 5583 2361 21

Internet: [www.strolz.at/en](http://www.strolz.at/en)

Email: [office@strolz.at](mailto:office@strolz.at)

### **Swarovski Shop Lech**

Address: Tannberg 228, 6764 Lech am Arlberg

Opening hours: Mon - Sat: 9.30 a.m. 12.30 a.m. , 3 p.m. - 6.30  
p.m., Sun 2 p.m. - 6.30 p.m.

Phone: +43 5583 41807

### **Thurnher's Milchbar/Thurnher's Shop** groceries, gifts, accessoires, milk shakes

Address: next to Zürserseelift

Opening hours: 11 a.m. - 7 p.m.

Phone: +43 5583 4197012

Internet: [www.thurnhers.com/en/milchbar](http://www.thurnhers.com/en/milchbar)

#### **Population**

1,512

#### **Currency**

Euro (EUR) €1 = 100 cents

#### **Internet**

[www.lechzuers.com](http://www.lechzuers.com)

[www.facebook.com/lechzuers](https://www.facebook.com/lechzuers)

[www.instagram.com/lechzuers](https://www.instagram.com/lechzuers)

[www.youtube.com/lztg](https://www.youtube.com/lztg)

#### **Emergency numbers**

Emergency: 112

Police: 133

Medical: 144

Mountain Rescue: 140

#### **Tourist information**

[www.lechzuers.com](http://www.lechzuers.com)

[info@lech-zuers.at](mailto:info@lech-zuers.at)

+43 5583 21610