



# Rønne

Photo: Jacek\_Kadaj/Shutterstock.com



abogdanska/Shutterstock.com



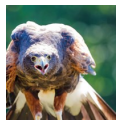
Aynia Brennan/Shutterstock.com



News Oresund

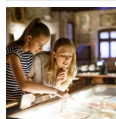
Rønne is the largest town on the Danish island of Bornholm in the Baltic Sea, offering beautiful nature, charming squares, and half-timbered houses. Bornholm is located on the western part of the island, and the idyllic harbour today is busy with fishing boats, cargo ships, and ferries. Explore the cosy, cobbled streets and the fascinating museums and history that the island has to offer.

## Featured



### Bornholms Rovfugleshow

Through daily shows and exhibitions, the Bornholms Rovfugleshow is aiming to...



### The Museum of Defence on B...

This small local military museum is a great place to visit to get some knowl...

## Top 5



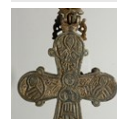
### Hjorths Fabrik

Visit the cosy, 150 old ceramic factory which today is also a museum. The ce...



### Antoinette Beach

Antoinette beach is one of the most popular sandy beaches of Rønne with unto...



### The Museum of Bornholm

Make a visit to the interesting heritage Museum of Bornholm in Rønne. The Mu...



### Bicycle trip

Bornholm is hills, waves, paving stones, smoked herrings and round churches ...



### Brændesgårdshaven

This cosy and family friendly amusement park Brændesgårdshaven (former



## THE CITY



*John Copland*

With its lively harbor and airport, Rønne is Bornholm's centre of trade and culture. The harbor called Sdr. Bådehavn is the largest one of Bornholm and frequented by ferries, fishing boats and cargo vessels. The town is also the seat of the island's administration and around one-third of the island's population lives here.

Rønne has a fascinating history coming under German and Swedish influence during its expansion as a herring fishing port and today with its cobbled streets, half-timbered houses and exciting museums it draws visitors mostly from Denmark, Germany, Sweden and Poland. Indeed, the town is known for its quaint cobbled streets and low-timbered houses so a visit to the streets called Laksegade and Storegade is a must. Stroll around here and explore the many historic houses which were once the homes and trade buildings of merchants and noblemen. In addition, the town also attracts visitors with its whitewashed St. Nicolas Church which stands proudly on the harbour and the graceful 19th-century lighthouse provides plenty of beautiful photo opportunities. This lovely town also called as “garden town” is a great mix of the sea and land and for sure deserves a visit.

## DO & SEE



*ActionPix/Shutterstock.com*

Rønne, the largest town on the small rocky island of Bornholm offers plenty of exciting things to do for their visitors. Here you can explore everything from fortress ruin Hammerhus or Bornholm's distinctive round churches to beautiful nature like the Antoinette beach. On the island you will also find lots of lovely art and crafts so a visit to Hjorths Fabrik is a must. One of the best way to discover the island is by bike, so why not rent a bike and start exploring?

### Hjorths Fabrik



Visit the cosy, 150 old ceramic factory which today is also a museum. The ceramic factory is still creating stoneware after the original

principles. When entering inside the old factory you will feel the ambiance of a unique industrial environment and after the tour why not buy some beautiful products to bring back home from the museum shop.

They also provide activities such as workshops. For more detail see website below.

Photo: [bluelake/Shutterstock.com](#)

Address: Krystalgade 5, Rønne

Phone: +45 5695 0160

Internet: [www.bornholmsmuseum.dk](http://www.bornholmsmuseum.dk)

Email: [bm@bornholmsmuseum.dk](mailto:bm@bornholmsmuseum.dk)

### Antoinette Beach



Antoinette beach is one of the most popular sandy beaches of Rønne with untouched nature and clear waters. This long, pleasant beach, north of

Rønne is several hundred metres along the coast so there are plenty of space and it is easy to find a sheltered spot. The beach is easily reachable from Rønne and offers good parking opportunities.

Photo: Karl E. Jørgensen(image cropped)

Address: Antoinettevej 2, Rønne

### The Museum of Bornholm



Make a visit to the interesting heritage Museum of Bornholm in Rønne. The Museum of Bornholm is a heritage museum offering 10,000

years of history, both prehistoric and more recent. Explore Bornholm clocks, the gold artefacts, mementos from the war, maritime history exhibits and much more. This is a great museum that will give you and your family good experience.

Photo: Nationalmuseet - National Museum of Denmark(image cropped)

Address: Skt. Mortensgade 29, Rønne

Phone: +45 5695 0735

Internet: [www.bornholmsmuseum.dk](http://www.bornholmsmuseum.dk)

Email: [bm@bornholmsmuseum.dk](mailto:bm@bornholmsmuseum.dk)

### Bicycle trip



Bornholm is hills, waves, paving stones, smoked herrings and round churches so one of the best way to explore this beautiful nature is by

bike. Cycling in Bornholm is suitable both for families, couples, cycle enthusiasts and beginners. To cycle on Bornholm is safe and with great cycle tracks it makes it easy.

Photo: Jacek\_Kadaj/Shutterstock.com

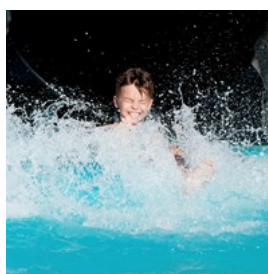
Address: Nordre Kystvej 5, Rønne

Phone: +45 5695 1359

Internet: [www.bornholms-cykeludlejning.dk](http://www.bornholms-cykeludlejning.dk)

Email: [info@bornholms-cykeludlejning.dk](mailto:info@bornholms-cykeludlejning.dk)

### Brændesgårdshaven



This cosy and family friendly amusement park Brændesgårdshaven (former Joboland) on Bornholm is a large playground, waterpark

and animal park and when the entrance is paid, all rides are free! Not only providing all the fun activities but also offers a beautiful garden with flowers, lake and animals. Truly a paradise for the whole family and you are guaranteed a really fun day.

Photo: Valiza/Shutterstock.com

Address: Højevejen 4, Svaneke

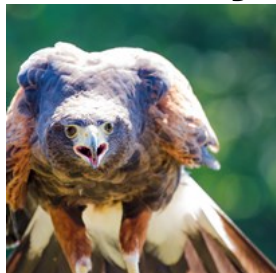
Phone: +45 5649 6076

Internet: [www.braendesgaardshaven.com](http://www.braendesgaardshaven.com)

Email: [post@braendesgaardshaven.com](mailto:post@braendesgaardshaven.com)

More Info: Brændesgårdshaven is located near Svaneke on Bornholm

### Bornholms Rovfugleshow



Through daily shows and exhibitions, the Bornholms Rovfugleshow is aiming to teach the audience a little more about the birds'

wonderful world. You get the chance to get really close up view with the birds and see these wonderful creators fly freely among the audience. This is truly a wonderful learning experience in a fabulous nature with lakes, cliffs and an amazing view.

On-site there is cosy café where you can enjoy coffee, cake, ice cream and snacks.

Photo: Susanne Nilsson(image cropped)

Address: Lundsgardsvej 4, Nyker, Rønne

Phone: +45 9679 3037

Internet: [www.bornholmsrovfugleshow.dk](http://www.bornholmsrovfugleshow.dk)

### The Museum of Defence on Bornholm



This small local military museum is a great place to visit to get some knowledge of the military history of the island of Bornholm. Here you can

explore military equipment from the past 500 years, uniforms, weapons, remains of a V1 flying bomb, which are all housed in unique historical buildings. On the courtyard you will even find a tank. There are guided tours of the exhibitions.

When you are here why not visit the impressive tower called Kastelstårnet, located near the Museum of Defence, a bit south of the old part of Rønne.

Photo: Iakov Filimonov/Shutterstock.com

Address: Arsenalvej 8, Rønne

Opening hours: The museum is only open in the summer

Phone: +45 5695 6583

Internet: [www.bornholmsforsvarsmuseum.dk](http://www.bornholmsforsvarsmuseum.dk)

### DINING



Nielskliim/Shutterstock.com

When in Rønne, you need to experience the food culture in Bornholm, with its fresh Danish food but also in many cases, some foreign delicacies.

You will find an extensive selection of restaurants and eateries on the island. Try, for example, one of the high-class gourmet restaurants or visit one of the small cosy restaurants. One stopover you need to do is at one of the smokehouses with their traditional chimneys. Often they are combined restaurant and a shop.

### Casa Mia



Restaurant Casa Mia is Rønnes oldest Italian Restaurant and Pizzeria. The owner Eva and Rafael Trifletti started the business year 1994

and offers a cosy place with friendly service for everyone who is entering in. The menu offers a large selection of pizza and pasta dishes and the best of all, they come in large portions.

Photo: Zodiacphoto/Shutterstock.com

Address: Antoniestræde 3, Rønne

Phone: +45 5695 9573

Internet: [www.casamia-bornholm.dk](http://www.casamia-bornholm.dk)

### Selma's Home Cooking



Situated in a side street only a few meters from the main square. Selma's Home Cooking offers something for every taste - be it steak, fish/shellfish

prepared in European style, or Asian/Thai inspired dish. In the kitchen the chefs put great emphasis on using fresh vegetables and some Danish ingredients, all to serve you a mouth-watering dish.

Photo: [suriyachan/Shutterstock.com](#)

Address: Tornegade 6, Rønne

Opening hours: Monday-Saturday: 17:00-21:30 (during summer longer opening hours)

Phone: +45 5695 3475

Internet: [www.restaurantselmas.dk](http://www.restaurantselmas.dk)

Email: [pepke@privat.dk](mailto:pepke@privat.dk)

### Texas Bornholm



American styled themed restaurant with a good variety of food, everything from salads, grilled chicken to chilli con carne, smoked

spareribs, rib eye, and burgers can be found on the menu. For the kids, there is also a children's menu.

Photo: [KarepaStock/Shutterstock.com](#)

Address: St. Torvegade 14, Rønne

Phone: +45 5691 1009

Internet: [www.texas-bornholm.dk](http://www.texas-bornholm.dk)

Email: [texas-bornholm@mail.dk](mailto:texas-bornholm@mail.dk)

## CAFES



*MR.MITR SRILACHAI/Shutterstock.com*

When you need to relax, head over to one of the island's cosy cafes. Enjoy the lovely and casual atmosphere with a nice meal, a good cup of coffee, or a piece of cake. When in Denmark, you should definitely try some delicious, crispy, danish pastry. You are just going to crave for more.

### Cafe Gustav



Café Gustav is ideally located on Ronne Torv, you cannot miss it. With a large menu you will definitely find something that suit your taste. If you need some caffeine, have a latte or cappuccino or why not a beer or a glass of wine?

Photo: [love coffee/Shutterstock.com](#)

Address: Store Torv 8, Rønne

Phone: +45 56 91 00 47

Internet: [www.cafegustav.dk](http://www.cafegustav.dk)

Email: [mail@cafegustav.dk](mailto:mail@cafegustav.dk)

### Bagel Express



If you are fan of bagels, then head over to this place where the service is friendly and efficient. Here you can relish delicious homemade

bagels with every topping you can think off. If you are thirsty have a cup of coffee, latté or tea. There are also large selections of cold drinks.

Photo: Olga Miltsova/Shutterstock.com  
Address: Lille torv 10, Rønne  
Opening hours: Monday - Friday 10:00 - 18:00  
Phone: +45 56 91 41 00  
Internet: [www.bagelexpress.dk](http://www.bagelexpress.dk)

### Jensens Bageri



At Jensen's bakery, you can expect bread, rolls and pastries of the highest quality. Only the best ingredients are used to get that perfect taste.

Pop in and buy some take-away and enjoy your pastry or cake on the harbour.

Photo: chettarin/Shutterstock.com  
Address: Snellemark 41, Rønne  
Opening hours: Monday - Friday 06:30-17:30, Saturday 06:30-14:00, Sunday closed  
Phone: +45 56 91 10 67  
Internet: [www.jensensbageribornholm.dk](http://www.jensensbageribornholm.dk)  
Email: [jensensbageri@yahoo.dk](mailto:jensensbageri@yahoo.dk)

## SHOPPING



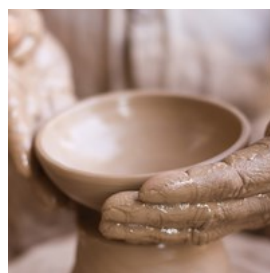
*Alehins (image cropped)*

Despite its size and location in the middle of the Baltic, Bornholm offers great shopping opportunities including flea markets, shops, craft workshops and more. Most of the shops are

concentrated in the areas of Lille Torv and the Store Torv so stroll around and explore specialist shops with unique items or find many of the well-known chain stores.

When on Bornholm you will find lots of arts and crafts, so a visit to a craft workshops is a must and probably you will find one or two souvenirs to bring back home.

### Hjorths Fabrik



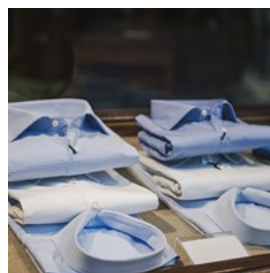
Visit the cosy, 150 old ceramic factory which today is a museum. The ceramic factory is still creating stoneware after the original principles.

When entering inside the old factory you will feel the ambiance of a unique industrial environment and after the tour why not buy some beautiful products to bring back home from the museum shop.

They also provide activities such as workshops. For more detail see website below.

Photo: bluelake/Shutterstock.com  
Address: Krystalgade 5, Rønne  
Phone: +45 5695 0160  
Internet: [www.bornholmsmuseum.dk](http://www.bornholmsmuseum.dk)  
Email: [bm@bornholmsmuseum.dk](mailto:bm@bornholmsmuseum.dk)

### Din Tøjmand by Jan & Nalle



At this modern menswear store you will find many well-known brands, but also the stores own successful brand. Levis, Hugo Boss, Henri Lloyd and Peak Performance are some of the brands which are stocked here.

Photo: Creative Lab/Shutterstock.com  
Address: Store Torvegade 1, Rønne  
Phone: +45 56 95 26 33  
Internet: [www.janognalle.dk](http://www.janognalle.dk)  
Email: [ronne@dintojmand.dk](mailto:ronne@dintojmand.dk)

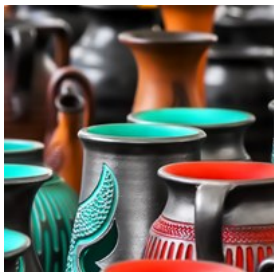
### Bente Hammer



Bring home some Bornholm crafts by visiting Bente Hammer where the clothes are lively and fresh with Bente's own hand screen printed designs. This little store is truly a treasure.

Photo: nd3000/Shutterstock.com  
Address: Nyker Hovedgade 32, Nyker, Rønne  
Phone: +45 56 96 33 35  
Internet: [www.bentehammer.dk](http://www.bentehammer.dk)  
Email: [shop@bentehammer.dk](mailto:shop@bentehammer.dk)

### Eva Brandt Keramik



Bring home some beautiful souvenirs from this lovely store where the ceramics are made by Eva Brandt. She creates unique items, hand-thrown and modelled pots and vases.

Photo: Marques/Shutterstock.com  
Address: Larsegade 23, Rønne  
Phone: +45 5090 4100  
Internet: [www.evabrandt.dk](http://www.evabrandt.dk)  
Email: [eva.keramik@gmail.com](mailto:eva.keramik@gmail.com)

### William Dams Boghandel



William Dams Boghandel is a bookstore providing books for a cheap price and good service. They stock more than 5,000 titles. The competent staff

is available with the right expertise and understanding.

Photo: LStockStudio/Shutterstock.com  
Address: St. Torv 7, Rønne  
Phone: +45 569 64 600  
Internet: [www.williamdam.dk](http://www.williamdam.dk)  
Email: [support@williamdam.dk](mailto:support@williamdam.dk)

### Sportmaster



For sport equipment and clothes, Sportmaster is the store to visit. Sportmaster is a change-store with around 100 stores all over Denmark, offering items for men, women and children.

Photo: Iakov Filimonov/Shutterstock.com  
Address: Store Torv 10, Rønne  
Opening hours: Monday - Tuesday: 10:00-18:00, Friday: 10:00-18:00, Saturday: 09:30-14:00  
Phone: +45 56 95 19 04  
Internet: [www.sportmaster.dk](http://www.sportmaster.dk)  
Email: [ronne@sportmaster.dk](mailto:ronne@sportmaster.dk)

### Snellemark Centret



Snellemark center is Bornholm shopping center which is located in the beautiful city of Rønne. Even though it is a small shopping center it offers an exciting mix of shops so you will definitely find everything your heart desires. Everything from fashion, beauty products to groceries can be found here. Shops like H&M, Vero Moda, Nyform and sNoir are housed here.

Photo: Pressmaster/Shutterstock.com  
Address: Snellemark 17, Rønne  
Opening hours: Monday - Friday: 10:00-18:00, Saturday: 10:00-15:00

Internet: [www.snellemarkcentret.dk](http://www.snellemarkcentret.dk)  
Email: [snellemarkcentret@gmail.com](mailto:snellemarkcentret@gmail.com)

## TOURIST INFORMATION



*ArturNyk/Shutterstock.com*

### Airport



The Bornholm Airport is about 6-7 minutes' drive from Rønne on Bornholm. To travel to and from the airport you can take the bus, Air Taxi Service or

taxi.

#### Bus service:

Use the regional bus number 3 or 5 from the airport to get to Rønne during the season. For time tables, please check [www.bat.dk](http://www.bat.dk) or [www.rejseplanen.dk](http://www.rejseplanen.dk)

#### Air Taxi Service:

With this taxi service you can get to your destination in Bornholm and also back again to the airport when leaving. The cost of the Air Taxi Service will be determined by which zone you are going to. The island is divided into three zones and the price differs depending on your destination. If using Air Taxi service remember to book at least three hours before your departure from Copenhagen and also three

hours before your departure from Rønne. Please call tel. +45 5696 2301 - and please remember to inform, that you are ordering Air Taxi Service, not an ordinary taxi.

[www.dantaxi.dk/Bornholm/Fly-Taxi](http://www.dantaxi.dk/Bornholm/Fly-Taxi)

#### Taxi:

There is a permanent taxi stand by the airport. If you would like to order a taxi call +45 - 56 95 23 01

[www.dantaxi.dk](http://www.dantaxi.dk)

Photo: Juan Garces

Address: The Bornholm Airport

Phone: +45 56 95 26 26

Internet: [www.bornholmairport.dk](http://www.bornholmairport.dk)

### Public Transport



On Bornholm the public bus company is called BAT. They provide hourly services on the major bus routes. All of the routes goes from Rønne and

drives to the small towns of the island. The schedules of the buses are adjusted to the arrival and departure times of the ferries.

You can also easily get around in Rønne with the same bus company.

Photo: Pierre-Luc Auclair

Address: Rønne

Phone: +45 569 52 121

Internet: [www.bat.dk](http://www.bat.dk)

Email: [post@bat.dk](mailto:post@bat.dk)



## Taxi



Taxi Nord +45 5648 0832  
www.taxinord.dk DanTaxi  
+45 56 95 23 01 www.dan  
ntaxi.dk/Bornholm  
info@dantaxi.dk

Photo: ArrivalGuides  
Phone: +45 5648 0832  
Internet: www.taxinord.dk

## Pharmacy



A-apoteket - Rønne  
Apotek

Photo: Gemma Garner  
Address: Store Torvegade 12, st., Rønne  
Opening hours: Monday - Thursday: 09:00-17:30, Friday:  
09:00-18:00, Saturday: 09:30-13:30  
Phone: +45 5695 0130  
Internet: www.a-apoteket.dk  
Email: info@roenne-apotek.dk

## Telephone



Country code +45

Photo: Jardson Almeida

## Electricity

220V / 50Hz



Photo: Stirling Tschan

**Population**  
13,796 (2021)

**Currency**  
Danish krone (DKK) 1 = 100 øre

**Opening hours**  
The stores are open seven days a week until 20:00 in  
summer time.

**Newspapers**  
Bornholms Tidende (www.tidende.dk)

**Emergency numbers**  
Emergency: 112

**Tourist information**  
The Bornholm Visitor Centre  
Nordre Kystvej 3  
3700 Rønne  
+45 5695 9500  
info@bornholm.info