



# Hong Kong

Photo: ESB Professional/Shutterstock.com



Vincent St. Thomas/Shutterstock.com

Hong Kong is a young, vibrant city bursting with energy. This is obvious to anyone standing on the pier in Tsim Sha Tsui, looking out over Hong Kong's impressive skyline of skyscrapers. Here's a city that has managed to make an art of squeezing seven million people together in an area of 1.000 square kilometres. With its beautiful landscapes, distinctive cyberpunk air, energetic nightlife and fantastic food, Hong Kong is a traveller's paradise. Over 25 million people come here each year to experience a city unlike any other.



Ollyy/Shutterstock.com



EarnestTse/Shutterstock.com

## Featured



### Man Mo Temple

Man Mo Temple is one of the popular places in Hong Kong. The old Hong Kong r...



### Ocean Park

Ocean Park is the largest theme park in Hong Kong and should not be missed. ...



### Hong Kong Disneyland Park

If you go to Hong Kong you must go to Disneyland. A perfect place to enjoy a...



### Tai Kwun - Centre for Heri...

Hong Kong's largest ever restoration project is an arts and entertainment co...



### Big Buddha / Tian Tan Buddha

You will find the Big Buddha on Lantau Island which is the largest island in...

## Top 5



### Xiqu Centre

The Xiqu Centre building, inspired by the design of traditional Chinese lant...



### Dragon's Back Trail

Hong Kong's Dragon's Back Trail is a 2-3 hour hiking trail that cuts through...



### Quarry Bay -- Yick Cheong ...

The Yick Cheong Building represents Hong Kong's scarcity of living space: ni...



### A Symphony of Lights

At 20:00 every night, you can admire a dazzling multimedia show outdoors wit...



### Victoria Peak

Victoria Peak is an absolute must for visitors to Hong Kong - ascend 522 met...



## THE CITY



leungchopan/Shutterstock.com

You can find everything in Hong Kong: some of the world's most exciting skyscraper architecture, fashionable shopping malls, a subtropical wilderness and one of the world's hottest financial districts.

SoHo - south of Hollywood Road - is where you will find the world's largest system of interconnected escalators, a vibrating artery linking together restaurants, cafés, bars, interior design shops and shopping malls. For the fashion-conscious, a visit to Causeway Bay is recommended - here, it is mainly young people who enjoy combing the fashion boutiques until late into the evening. Anyone who loses their way in the alleys of the technology paradise of Kowloon will find their way to an interesting restaurant in the Chinese quarter of Central or decide to take a swim in Stanley. And so it continues: Hong Kong is an adventure.

## DO & SEE



SAHACHATZ/Shutterstock.com

Temples, museums, amusement parks and lookout points - Hong Kong has a great variety of sights to explore. Highlights include the Man Mo Temple, Victoria Peak, the Big Buddha and the night-time market in Temple Street, but be sure to find some time to explore some of the city's fantastic museums, as well: the former colonial police station of Tai Kwun, for example, reopened recently as a museum and cultural venue, and features curious spots like a full-blown bar inside a refurbished old prison.

### Xiqu Centre



The Xiqu Centre building, inspired by the design of traditional Chinese lanterns, seems to invite you inside with its facade resembling a futuristic interpretation of stage curtains opening. 1,073 guests can enjoy Xiqu exhibitions and the traditional Chinese opera in the Grand Theatre, while the Tea House Theatre holds 200 seats. Guided tours in different languages can also be booked.

Photo: oceanfishing/Shutterstock.com

Address: 88 Austin Road West, Tsim Sha Tsui, Kowloon

Opening hours: Xiqu Centre: daily 10am-10.30pm. Box

Office: daily 10am-9pm

Phone: +852 2200 0022

Internet: [www.westkowloon.hk/en/xiqu-centre](http://www.westkowloon.hk/en/xiqu-centre)  
Email: [ticketinfo@wkcd.hk](mailto:ticketinfo@wkcd.hk)  
More Info: Located at the junction of Canton Road and Austin Road.

### Dragon's Back Trail



Hong Kong's Dragon's Back Trail is a 2-3 hour hiking trail that cuts through stunning landscapes and offers views over the southern part of Hong Kong, with opportunities for a swim or surf at Big Wave Bay. This hike is the last section of what comprises a total of 8 legs of the entire Hong Kong Trail, so if you feel up to a more extensive adventure, simply enter at an earlier point.

Photo: Daniel Andis/Shutterstock.com  
Address: Shek O Park, Hong Kong  
Internet: [www.discoverhongkong.com/us/see-do/great-outdoors/hikes/dragons-back.jsp](http://www.discoverhongkong.com/us/see-do/great-outdoors/hikes/dragons-back.jsp)

### Quarry Bay -- Yick Cheong Building



The Yick Cheong Building represents Hong Kong's scarcity of living space: nicknamed "Monster Building," the sprawling residential complex contains a dizzying number of small apartments, seemingly stacked one on top of another. It has been used as filming ground for multiple productions, famously including the recent remake of "Ghost in the Shell" and an instalment of the "transformers".

Photo: Tavarius/Shutterstock.com  
Address: Kings Road, Hong Kong

### A Symphony of Lights



At 20:00 every night, you can admire a dazzling multimedia show outdoors with laser lights in a multitude of colours; the show involves more than 40 buildings by the harbour. This is a beautiful and unforgettable experience that should not be missed when visiting Hong Kong.

The best views are along the Tsim Sha Tsui waterfront between the Avenue of Stars and the Hong Kong Cultural Centre and the promenade at Golden Bauhinia Square in Wan Chai.

Photo: ESB Professional/Shutterstock.com  
Address: Tsim Sha Tsui, Hong Kong & Wan Chai, Hong Kong  
Opening hours: Monday - Sunday: from 20:00

### Victoria Peak



Victoria Peak is an absolute must for visitors to Hong Kong - ascend 522 metres by tram and look out over the entire city, but do make sure that it is not a foggy day. Victoria Peak has always been an area for the propertied classes, and nowadays this also means that Hong Kong's best promenade is to be found in the leafy, quiet area around the peak station. It is also here you will find one of the most iconic landmarks of Hong Kong, The Peak Tower that features Hong Kong's highest observation tower (the Sky Terrace 428), including the wax museum Madame Tussauds and the Peak Market.

Photo: leungchopan/Shutterstock.com  
Address: 128 Peak Road, The Peak, Hong Kong  
Opening hours: The tram leaves every ten minutes and runs between 07:00 and 00:00. The Peak Tower opens from 10:00-23:00 on weekdays, from 08:00-23:00 on weekends.

Phone: +852 2522 0922  
Internet: [www.thepeak.com.hk](http://www.thepeak.com.hk)  
Email: [info@thepeak.com.hk](mailto:info@thepeak.com.hk)  
More Info: Take the tram from Garden Road or Cotton Tree Drive

### Tai Kwun - Centre for Heritage and Arts



Hong Kong's largest ever restoration project is an arts and entertainment complex occupying the colonial-era police station and its adjacent

buildings, such as a former jail, where today's visitors head of their own volition. The Tai Kwun Contemporary located on its grounds is estimated to host up to 8 art exhibitions every year, plus music and cultural events (such as theatrical performances, workshops, and more) are being scheduled continuously - check their website to see what's on. Don't miss the bar occupying an old prison building.

Photo: [noina/Shutterstock.com](https://www.shutterstock.com/photo/noina)  
Address: 10 Hollywood Rd, Central, Hong Kong  
Opening hours: 10.00-23.00  
Phone: +852 3559 2600  
Internet: [www.taikwun.hk/en](http://www.taikwun.hk/en)

### Star Ferry



Since 1888, this oval, double-decker ferry has transported the residents of Hong Kong between Kowloon and Hong Kong Island. Star Ferries does not only provide an insight into the day-to-day life of Hong Kong but also offers the cheapest and best views of the Victoria Harbour.

There are four different trips, but the most popular is between Central and Tsim Sha Tsui.

Photo: [joyfull/Shutterstock.com](https://www.shutterstock.com/photo/joyfull)  
Address: Star Ferry Pier, Tsim Sha Tsui, Kowloon, Hong Kong  
Opening hours: 06:30-22:30, boats leave every 8 to 20 minutes.  
Phone: +852 2367 7065  
Internet: [www.starferry.com.hk/en/home](http://www.starferry.com.hk/en/home)  
Email: [sf@starferry.com.hk](mailto:sf@starferry.com.hk)

### Man Mo Temple



Man Mo Temple is one of the popular places in Hong Kong. The old Hong Kong residents prayed for the God of Literature "Man" and the God of War "Mo" and this tradition has been retained until now. You can go to the altar to collect a box of prophecy stick. Shake the box until one of the sticks falls out - then go to one of the fortune-teller stalls and get to know your future.

Photo: [BlueOrange Studio/Shutterstock.com](https://www.shutterstock.com/photo/BlueOrange)  
Address: 124-126 Hollywood Road, Sheung Wan, Hong Kong  
Opening hours: 08:00-18:00  
Phone: +852 2540 0350  
Internet: [www.tungwah.org.hk/en/heritage/historical-architecture/man-mo-temple](http://www.tungwah.org.hk/en/heritage/historical-architecture/man-mo-temple)

### Big Buddha / Tian Tan Buddha



You will find the Big Buddha on Lantau Island which is the largest island in Hong Kong. Big Buddha is the world's largest seated outdoor bronze Buddha statue, which is more than 34 metres high. After the visit, head to the monastery nearby where you can eat a vegetarian lunch with the monks.

Photo: [Vincent St. Thomas/Shutterstock.com](https://www.shutterstock.com/photo/Vincent)  
Address: Lantau Island, Hong Kong  
Opening hours: 8:00-18:00

Phone: +852 2985 5248  
Internet: [www.plm.org.hk](http://www.plm.org.hk)  
Email: [info@plm.org.hk](mailto:info@plm.org.hk)

### Hong Kong Museum of History



This museum narrates the history of Hong Kong. Go through the eight rooms that range from prehistoric times to the hand-over to China in

1997. Here you can see everything from traditional Chinese clothes and an old reconstructed street from 1881 to toys from the 1970s.

Photo: [Mixov/Shutterstock.com](https://www.shutterstock.com)  
Address: 100 Chatham Road, Tsim Sha Tsui, Kowloon, Hong Kong  
Opening hours: Monday, Wednesday to Friday: 10:00-18:00.  
Saturday to Sunday: 10:00-19:00.  
Phone: +852 2724 9042  
Internet: [hk.history.museum](http://hk.history.museum)  
Email: [hkmh@lcsd.gov.hk](mailto:hkmh@lcsd.gov.hk)

### Hong Kong Zoological and Botanical Gardens



Here you will find hundreds of species of birds and exotic plants in a beautiful setting filled with fountains and sculptures. On the West

of Garden Road, which runs straight through the gardens, you will find a zoo with an impressive collection of endangered species.

Photo: [Michael Neil Thomas/Shutterstock.com](https://www.shutterstock.com)  
Address: Albany Road, Central, Hong Kong  
Opening hours: Garden: 05:00-22:00. Greenhouse: 09:00-16:30. Other areas: 06:00-19:00.  
Phone: +852 2530 0154  
Internet: [www.lcsd.gov.hk/en/parks/hkzbg/index.html](http://www.lcsd.gov.hk/en/parks/hkzbg/index.html)  
Email: [dmhkzbg@lcsd.gov.hk](mailto:dmhkzbg@lcsd.gov.hk)

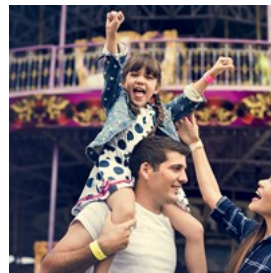
### Pak Tai Temple



This temple was built in the 1860's in honour of "Pak Tai", a peace-keeping god of war. Look into one of the side rooms where old men are seated, building small paper and bamboo models of everything that they want to carry with them into the afterlife.

Photo: [Ilia Torlin/Shutterstock.com](https://www.shutterstock.com)  
Address: Lung On Street, Wan Chai, Hong Kong  
Public Transport: Bus 6, 10, 15  
Opening hours: 08:00-17:00  
Internet: [www.ctc.org.hk/en/directcontrol/temple10.asp](http://www.ctc.org.hk/en/directcontrol/temple10.asp)

### Hong Kong Disneyland Park



If you go to Hong Kong you must go to Disneyland. A perfect place to enjoy a full day with family and friends. Here, dreams are brought

to life for both the young and the ones young at heart. Meet your favourite Disney characters and spice up your day with parades and fireworks and try out all the different rides.

The park is divided into seven main areas:  
Adventureland - into the heart of uncharted jungles  
Fantasyland - the "happiest kingdom of them all"  
Grizzly Gulch - look for gold and glitters in an abandoned mining town  
Main Street, USA - the picturesque boulevard of dreams  
Mystic Point - an mysterious rain forest  
Tomorrowland - like our dreams - is timeless  
Toy Story Land - a chance for you to become a toy

Photo: Rawpixel.com/Shutterstock.com

Address: Lantau Island, Hong Kong

Public Transport: Travel on the railway network of MTR and interchange for the Disneyland Resort Line at Sunny Bay Station.

Opening hours: 10:30-20:45

Phone: +852 3550 3388

Internet: [www.hongkongdisneyland.com](http://www.hongkongdisneyland.com)

More Info: Bus routes R11, R22, R33, R42 (operate only during morning and evening peak hours)

### International Commerce Centre & Sky 100



For great views over Hong Kong you should visit this 490 metre tall building, also called ICC. This is the tallest building with the highest indoor observation deck in town with four restaurants on the 101st floor. You will find the observation deck on the 100th floor, Sky 100, which offers magical panoramic views over the city.

Photo: Phattana Stock/Shutterstock.com

Address: 1 Austin Road West, West Kowloon, Hong Kong

Opening hours: Sunday to Thursday: 10:00-21:00. Friday to Saturday: 10:00-22:30.

Phone: +852 2730 0800

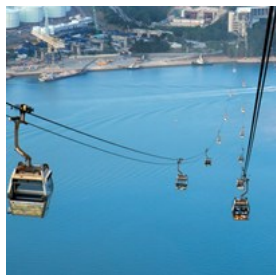
Tickets: Kowloon MTR Station

Internet: [www.shkp-icc.com/website/Main.do](http://www.shkp-icc.com/website/Main.do)

Email: [icc@kaishing.com.hk](mailto:icc@kaishing.com.hk)

More Info: Last entry time: Sunday to Thursday (20:30), Friday to Saturday (22:00)

### Ngong Ping 360



Ngong Ping 360 is the longest bi-cable ropeway in Asia and one of the top 10 cable car rides in the world that allow you to explore scenic Lantau

Island and Tung Chung. Along the 25-minute ride, you will see Hong Kong Airport, the Tian Tan Buddha, seas and grassland from a new angle. Try the Crystal Cabin with a glass bottom

to obtain a spectacular view. Don't miss out on the Ngong Ping Village to look for some Hong Kong souvenirs.

Photo: Milkovasa/Shutterstock.com

Address: No. 11 Tat Tung Road, Tung Chung, Lantau Island, Hong Kong

Public Transport: Exit B, Tung Chung MTR Station

Opening hours: 10:00-18:00

Phone: +852 3666 0606

Internet: [www.np360.com.hk](http://www.np360.com.hk)

Email: [info@np360.com.hk](mailto:info@np360.com.hk)

More Info: Note that you might spend quite some time waiting in line to get your tickets and to get on the cable. You may consider booking online in advance.

### Nan Lian Garden



Stroll around at this beautiful and well maintained garden which is surrounded by skyscrapers. This is a very quiet and peaceful

place where you can unwind and admire traditional Chinese architecture. The flowers, ponds and waterfalls will also catch your attention.

Photo: SAHACHATZ/Shutterstock.com

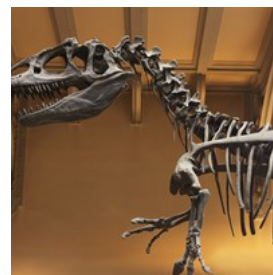
Address: No. 60, Fung Tak Road, Diamond Hill, Kowloon, Hong Kong

Phone: +852 3658 9366

Internet: [www.nanliangarden.org](http://www.nanliangarden.org)

Email: [info@nlgarden.org](mailto:info@nlgarden.org)

### Hong Kong Science Museum



Hong Kong Science Museum opened its doors in 1991 and is truly a place where you can learn science in a fun way. The museum houses

over 500 exhibits including the Energy Machine - the largest device of its kind in the world - and

the DC-3 airplane (the first local airliner). There are also many games and activities suitable for visitors of all ages.

Photo: ODM/Shutterstock.com

Address: 2 Science Museum Road, Tsim Sha Tsui East, Kowloon, Hong Kong

Opening hours: Monday to Wednesday, Friday: 10:00-19:00.  
Saturday to Sunday : 10:00-21:00.

Phone: +852 2732 3232

Internet: [hk.science.museum](http://hk.science.museum)

Email: [enquiries@hk.science.museum](mailto:enquiries@hk.science.museum)

### Soho



Explore the streets of Soho. Here you will find plenty of restaurants, bars, art galleries and small, unique shops. This is a great place to walk

around and there is so much to see. However, it is not recommended if you have a stroller since there are many stairs in the area.

Photo: ostill/Shutterstock.com

Address: South of Hollywood Road, Hong Kong

### Ocean Park



Ocean Park is the largest theme park in Hong Kong and should not be missed. At this park they truly know how to entertain people of all ages and

offer a wide range of different amusements. Have a closer look at the adorable animals, take a dizzy ride on the roller coaster or visit the magnificent aquarium and watch an animal show or see a variety of animal exhibits. Don't miss the cable car, this will be an extraordinary experience!

Photo: ivylingpy/Shutterstock.com

Address: Aberdeen, Hong Kong

Public Transport: Bus: 6A, 6X, 629

Opening hours: 10:00-18:00

Phone: +852 3923 2323

Internet: [www.oceanpark.com.hk/en](http://www.oceanpark.com.hk/en)

### The Hong Kong Observation Wheel



One of the most popular dating destinations for locals, this 60-metre-high Observation Wheel is located in business district Central, facing

the Victoria Harbour, resulting in a spectacular day and night view of Hong Kong. Private cabins are also available.

Photo: estherpoon/Shutterstock.com

Address: 33 Man Kwong St, Central, Hong Kong

Opening hours: 10:00-23:00

Internet: [www.hkpw.hk](http://www.hkpw.hk)

### Pottinger Street



The street named after the first Governor of Hong Kong Henry Pottinger in 1854 is also known as "Stone Slabs Street" for its unevenly

paved granite stone steps. Here, you can take ideal photos in the most iconic and attractive oldest street in the district. Besides, it takes around 10 minutes to walk from here to Hollywood Road where the Central Police Station and Victoria Prison are located (these highlight the architecture of Hong Kong during the colonial period).

Photo: yeowatzup/Flickr(image cropped)

Address: Pottinger Street, Central, Hong Kong

Public Transport: Exit D2, Central MTR Station

### Tai O Fishing Village



Let's travel back in time. Tai O once was one of the major fishing ports in Hong Kong. Because of its traditional stilt houses above the water, many have called it the "Venice of Hong Kong", though the smell of shrimp paste and dried seafood everywhere might break your fantasy of a romantic seaside village. The market, fishing boats, and age-old dwellings make Tai O a great place for photographers. Don't eat too much lunch, make some room for local snacks: egg waffles, big fish balls, tofu pudding, and grilled seafood.

Photo: balipadma/Shutterstock.com

Address: Tai O, Lantau Island, Outlying Islands, Hong Kong  
Public Transport: Bus 11 from Tung Chung MTR Station

### Wong Tai Sin Temple



One of the most famous temples in the city, as well as home to Taoism, Buddhism and Confucianism. The temple features colourful decor and is believed to help make wishes come true upon request, which partly explains its popularity. Also, don't miss out on the structures of the temple which represent the five Chinese elements, along with other areas of the complex, like Three Saints Hall and Good Wish Garden that are elaborately decorated.

Photo: Vincent St. Thomas/Shutterstock.com

Address: 2 Chuk Yuen Village, Wong Tai Sin, Kowloon, Hong Kong

Public Transport: Exit B2, Wong Tai Sin Temple

Opening hours: 07:00-17:00

Phone: +852 2327 8141

Internet: [www1.siksikyuen.org.hk/en/siksikyuen-home](http://www1.siksikyuen.org.hk/en/siksikyuen-home)

Email: [info@siksikyuen.org.hk](mailto:info@siksikyuen.org.hk)

More Info: Taisui Yuenchen Hall & Good Wish Garden

Opening Hours : 08:00-17:00

### DINING



SAHACHATZ/Shutterstock.com

Hong Kong offers a staggering variety of cuisines from around the world: Thai, Indian, British, Italian and not least, Chinese, among many, many others. Prices also vary widely, depending on the dining experience you are looking for. Cheap, fast eats, and street food are a must for the traveller on the go, but take some time to indulge in some of the city's top-class dining, as well.

### Tim Ho Wan



If you can only have one meal in Hong Kong, make it Tim Ho Wan. The internationally renowned, Michelin-starred chain of restaurants takes its origins from Hong Kong and specialises in what is referred to as "working-class dim sum". Here, you will get the unique chance to dine on specialities most restaurants would charge an arm and a leg for all at a price lower than what one would expect to pay for a cup of coffee.

Their most prized attraction is the BBQ pork buns, but the menu is highly varied and includes



everything from steamed dumplings to osmanthus cake.

Once seated, tick the boxes on the individual order cards on your table and hand those over to your server to place an order (there is a small selection in the illustrated menu); dishes normally arrive in no time.

Expect a long wait to be seated at most locations (there are several scattered throughout Hong Kong).

Our favourite outlet is the one in residential Sham Shui Po: there is usually either no wait at all or a much shorter one compared to locations downtown, plus you'll be dining in the company of locals. This branch is also where you're most likely to receive a private table (although sharing a table with strangers is customary across all outlets). At the time of writing, all Tim Ho Wan locations in Hong Kong are cash-only.

Photo: Shirley Soh/Shutterstock.com

Address: 9-11 Fuk Wing St, Sham Shui Po, Hong Kong

Opening hours: Mon-Fri 10am-9:30pm, Sat-Sun 9am-9:30pm

Phone: +852 2788 1226

Internet: [www.timhowan.hk](http://www.timhowan.hk)

### Ichiran Ramen



Take the chance to have a bowl of ramen at one of two Hong Kong-based outlets of the celebrated Japanese brand originating from Hakata, the birthplace of tonkotsu. Hong Kong's two locations stay true to the original, with semi-private seating facing the "service window". Wait for the tiny roll-up blind to be lifted by someone on the kitchen side, and a steaming hot bowl of ramen to materialise right in front of

you.

Ichiran's tonkotsu broth is so good it deserves to have poems dedicated to it: not too watery, not too thick (a common pitfall of tonkotsu elsewhere in the city), plus you get to pick (or leave out) any add-ons you prefer.

Photo: FoodToy/Shutterstock.com

Address: Causeway Bay, Shop F-I G/F Lockhart House Block

A 440 Jaffe Road, Hong Kong

Opening hours: Daily 9:30am-11pm

Phone: +852 2152 4040

Internet:

<https://en.ichiran.com/shop/oversea/hongkong/causewaybay/>

More Info: Second location in Tsim Sha Tsui (8 Minden Ave)

### Dim Dim Sum (Mong Kok)



An excellent choice for a dim sum feast that is incredibly affordable. The quality here is comparable to that of Tim Ho Wan, but the brand

name being lesser known means no line to be seated (although they've been distinguished by multiple publications and even listed among the world's 101 best places to eat by Newsweek). An English menu is available.

The Mong Kok location stays open until 2am.

Photo: TY Lim/Shutterstock.com

Address: 106 Tung Choi St, Mong Kok

Opening hours: Daily 11am-2am

Phone: +852 2309 2300

Internet: [www.dimdimsum.hk](http://www.dimdimsum.hk)

Email: [info@dimdimsum.hk](mailto:info@dimdimsum.hk)

More Info: At Sincere House Build

### Chi Lin Vegetarian



This is a vegetarian restaurant located within the Chi Lin Nunnery. It is open for the public and is situated behind a man-made waterfall

within a garden connected to the nunnery. The restaurant offers great Chinese vegetarian meals. It is often very busy over the weekend, but no reservations are accepted - it is better to be there early. The nunnery itself is also a fantastic place to visit as it was built in the Tang Dynasty architectural style.

Photo: ChameleonsEye/Shutterstock.com

Address: Nan Lian Garden, 60 Fung Tak Road, Diamond Hill, Hong Kong

Phone: +852 3658 9366

More Info: Nan Lian Garden and Chi Lin Nunnery

### Din Tai Fung



Din Tai Fung is a restaurant chain originating in Taiwan, which now has multiple branches across Asia and beyond (the fact it

remains largely unknown in the West is a tragic shortcoming). They are famous for their steamed dumplings (xiao long bao), which are some of the world's best: each move of the dumpling chefs is executed with careful precision in the open kitchen. It was once named among the top ten restaurants in the world by The New York Times, and two branches in Hong Kong were distinguished by the Michelin Guide. The service is truly impeccable, and the price-quality ratio needs to be experienced to be believed.

This particular outlet is well hidden in a shopping centre, but worth searching for. The

friendly staff serves quality food in a vibrant atmosphere.

Photo: TumOng/Shutterstock.com

Address: Shop 306, 30 Canton Rd, Tsim Sha Tsui, Hong Kong

Opening hours: Daily 11:30am-10pm

Phone: +852 2730 6928

Internet: [www.dintaifung.com.hk/indexe.php](http://www.dintaifung.com.hk/indexe.php)

Email: [info@dintaifung.com.hk](mailto:info@dintaifung.com.hk)

### Jumbo Floating Restaurant



Jumbo Floating Restaurant may look like a glorious mixture of Forbidden City and Las Vegas, but it is the right choice if you want to try

out the floating restaurants of Aberdeen Harbor and the seafood cuisine of Hong Kong. The menu comprises a mixture of traditional Chinese food, with dim sum every Sunday morning.

Photo: Petra Christen/Shutterstock.com

Address: Shum Wan Pier Drive, Wong Chuk Hang, Aberdeen, Hong Kong

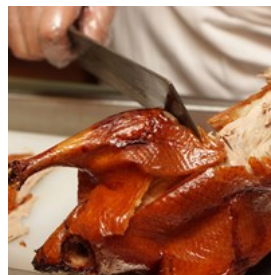
Phone: +852 2553 9111

Internet: [www.jumbo.com.hk](http://www.jumbo.com.hk)

Email: [sales@jumbokingdom.com](mailto:sales@jumbokingdom.com)

More Info: Free boat leaves from Aberdeen and Shum Wan Pier

### Spring Deer



This is a good choice for those who want to sample rustic, northern Chinese cuisine in a traditional-style restaurant. Claimed to

serve the best Peking duck in Hong Kong (not that duck is normally served whole, and is best split among 4 diners). It was once a very popular restaurant predominantly among locals, but the tourism boom of recent years has geared it increasingly towards foreign visitors. Advance

booking recommended.

Photo: Chubykin Arkady/Shutterstock.com

Address: 1/F, 42 Mody Road, Tsim Sha Tsui, Hong Kong

Opening hours: 12.00-15.00 & 18.00-23.00

Phone: +852 2366 4012

### Yat Lok Restaurant



Roast goose is one of Hong Kong's signature specialties, and Yat Lok Restaurant has been awarded Michelin One Star for cooking premium

roast goose, which is served with 'lai fun' (a type of Chinese noodle) or rice. The restaurant may be in the upper price range compared to others, but it is definitely worth trying their flavorful roast goose that will tickle your taste buds.

Photo: Ng KW/Shutterstock.com

Address: G/F, 34-38 Stanley Street, Central, Hong Kong

Opening hours: Monday to Saturday: 10:00-21:00. Sunday: 10:00-17:30

Phone: +852 2524 3882

### Heichinrou



The most luxurious dim sum to be found in Hong Kong. The cream of Hong Kong society gathers in Heichinrou of Kwun Tong and Diamond Hill on

public holidays to eat the exquisite, fancy dishes in elegant surroundings.

The most typical cuisine is dim sum, or "yum cha" as it is also called (literally: "drink tea"). Dim sum is eaten as a kind of brunch and consists of a large number of fancy dishes, including, among other things: dumplings, fried vegetables, spring rolls and meatballs.

Photo: witaya ratanasirikulchai/Shutterstock.com

Address: Level 6, Millennium City 6, 392 Kwun Tong Road, Kwun Tong, Kowloon, Hong Kong

Opening hours: Daily 8am-3:30pm, 5:30-10pm

Phone: +852 2954 8000

Internet: [www.heichinrou.com](http://www.heichinrou.com)

Email: [mc6@heichinrou.com](mailto:mc6@heichinrou.com)

More Info: Address in Diamond Hill : Shop 208, 2/F, Plaza Hollywood, 3 Lung Poon Street, Diamond Hill, Hong Kong

### Petrus



Located on the floor 56 at Island Shangri-La Hotel, Petrus is without a doubt one of Hong Kong's best French restaurants with a magnificent view of the

Victoria harbour. In a fine setting, you can enjoy contemporary French cuisine with an Asian twist, accompanied by wines from one of the most extensive assortments in Asia.

Photo: SnnvSnnvSnnv/Shutterstock.com

Address: Supreme Court Road, Central, Hong Kong

Opening hours: 12:00-15:00 & 18:30-23:00

Phone: +852 2820 8590

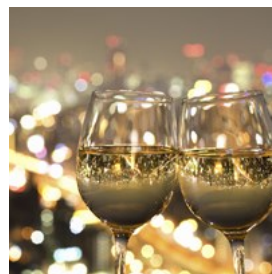
Internet:

[www.shangri-la.com/en/hongkong/islandshangrila/dining](http://www.shangri-la.com/en/hongkong/islandshangrila/dining)

Email: [petrus.isl@shangri-la.com](mailto:petrus.isl@shangri-la.com)

More Info: Located at Island Shangri-La Hotel, Pacific Place

### Felix



Hong Kong's finest panoramic restaurant was given a lift when it was refurbished by the designer Philippe Starck.

At this fantastic, Art Deco-inspired restaurant with a spectacular skyline view, you can have modern European cuisine (anything from barbecued spareribs to lobster nachos) and it is all cooked with the freshest seasonal ingredients under the direction of Chef Yoshiharu Kaji.

Dress Code: Smart Casual

Photo: KPG\_Payless/Shutterstock.com

Address: Salisbury Road, Tsim Sha Tsui, Hong Kong

Opening hours: Dinner: 18:00 - 22:30, Drinks: 17:30 pm - 01:30

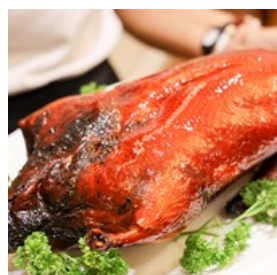
Phone: +852 2696 6778

Internet: hongkong.peninsula.com/en/fine-dining/felix

Email: diningphk@peninsula.com

More Info: 28th floor, The Peninsula Hong Kong

### Yung Kee Restaurant



No trip to Hong Kong is complete without a visit to the traditional Cantonese restaurant Yung Kee. Established in 1942, it is a place good for groups and business dining. Here you should try the speciality roast goose and barbecued pork (along with dim sum).

Photo: vinai chunkhajorn/Shutterstock.com

Address: 32-40 Wellington Street, Central, Hong Kong

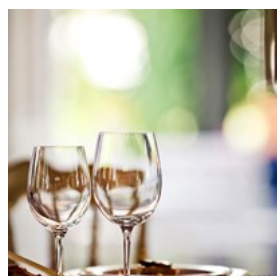
Opening hours: 11:00-23:30

Phone: +852 2522 1624

Internet: www.yungkee.com.hk

Email: info@yungkee.com.hk

### One-thirtyone



This beautiful restaurant is located in a 3-storey village house nestled in the bay of Three Fathoms Cove outside Hong Kong. It has no fixed menu, as the chef decides on the day's menu depending on ingredient availability. They offer a 4-course lunch and a 6-course dinner. There are not a lot of tables, so make sure to book well in advance.

Photo: Andrey Bayda/Shutterstock.com

Address: 131 Tseng Tau Village, Shap Sze Heung, Sai

Kung, New Territories, Hong Kong

Phone: +852 2791 2684

Internet: www.one-thirtyone.com

Email: onethirtyoneinhk@gmail.com

### Giando



For authentic Italian food head over to Giando, serving only food prepared with fresh ingredients and with passion. On the menu you will find delicious al dente pasta, risotto and yummy desserts. Here you can enjoy your food in a warm and welcoming atmosphere.

Photo: fototip/Shutterstock.com

Address: Shop 1, G/F, Tower 1, Starcrest, 9 Star Street, Wanchai, Hong Kong

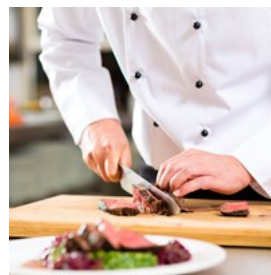
Opening hours: 12:00-15:00 & 18:00-22:30

Phone: +852 2511 8912

Internet: www.giandorestaurant.com

Email: info@giandorestaurant.com

### Morton's - The Steakhouse



Here you can enjoy an amazing view over the harbour while dining at this elegant restaurant located inside Sheraton Hotel. The restaurant offers fine dining, impeccable service and an award-winning wine menu. Also a great restaurant for family with children - there is a children's menu with tasty options.

Photo: Kzenon/Shutterstock.com

Address: 20 Nathan Road, Kowloon, Hong Kong

Phone: +852 2732 2343

Internet: www.mortons.com/hongkong

More Info: Sheraton Hotel, Fourth Level

### Lin Heung Tea House



If you would like to experience the warm hospitality of old Hong Kong, Lin Heung Tea House is the place to be – it is one of the most

famous traditional Chinese restaurants in Hong Kong since 1918. It stands as a local Cantonese tea house with good – and inexpensive – dim sum. Select the dishes you would like from the trolleys, which the waiters bring to the table.

Photo: cktiger/Shutterstock.com

Address: 160-164 Wellington Street, Central, Hong Kong

Public Transport: Exit E1, Sheung Wan MTR Station

Phone: +852 2544 4556

Internet: [www.linheung.com.hk](http://www.linheung.com.hk)

Email: [info@linheung.com.hk](mailto:info@linheung.com.hk)

### CAFES



*fokke baarssen/Shutterstock.com*

Cafe culture has become a trend among the younger generation in Hong Kong, so the number of coffee shops in the city has rapidly increased. You will find both small, private coffee shops as well as large international coffee chains around the city, all offering crafted coffee drinks and treats.

### Kubrick Bookshop Café



This hipster bookshop café lies next to Broadway Cinematheque and has a wide range of film-related books and magazines. It is

embellished with posters, quotes, paintings, and CD covers. Surrounded by books and old wooden shelves, this comfy and quiet place allows you to enjoy your pasta, coffee, or sandwich in a relaxed atmosphere.

Photo: Mutita Narkmuang/Shutterstock.com

Address: Shop H2, Prosperous Garden, 3 Public Square Street, Yau Ma Tei, Kowloon, Hong Kong

Opening hours: 11:30-22:00

Phone: +852 2384 8929

Internet: [www.kubrick.com.hk](http://www.kubrick.com.hk)

Email: [info@kubrick.com.hk](mailto:info@kubrick.com.hk)

### Tai Cheong Bakery



This Chinese bakery opened its doors in 1954, currently operating more than 20 stores around Hong Kong. Loved by the last British Governor of

Hong Kong, this is a place famous for its egg tart, a kind of custard tart pastry with a filling of egg custard. The freshly baked egg tarts are served differently depending on if the recipe is Chinese, Portuguese, or English.

Photo: MosayMay/Shutterstock.com

Address: Shop C, G/F, Lyndhurst BLDG 35 Lyndhurst Terrace, Central, Hong Kong

Opening hours: Daily 9:30am-7:30pm

Phone: +852 8300 8301

Internet: [www.taoheung.com.hk/en/home/index.html](http://www.taoheung.com.hk/en/home/index.html)

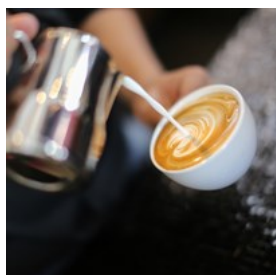
### One Little Room



Tucked away in a quiet corner of Hung Hom, One Little Room is a little gem where you can have a cup of coffee surrounded by words; the wall literally is covered with book pages, torn from old books. While you are here, try the signature dish frittata or waffles together with cold drip coffee, which can all be enjoyed in a warm ambiance.

Photo: Tommaso Delpiano/Shutterstock.com  
Address: LG10, Fu Wing Building, 436 Chatham Road North, Hung Hom, Hong Kong  
Opening hours: Tuesday to Friday: 08:30-21:00. Saturday to Sunday: 11:00-20:00.  
Phone: +852 5616 4515

### Amber Coffee Brewery



Amber Coffee Brewery is a simple but modern coffee shop located in the heart of the city where you certainly will get some good coffee. One of their baristas (Dawn Chan) is a 2-time winner of the Hong Kong Barista Championship and he came in 4th place at the World Barista Championship.

Photo: supatchai/Shutterstock.com  
Address: G/F, 142 Des Voeux Road, Central, Hong Kong  
Public Transport: Exit E1, Sheung Wan MTR Station  
Opening hours: Monday to Friday : 08:00-18:00. Saturday: 09:00-18:00. Sunday: 10:00-18:00  
Phone: +852 3106 0872  
Email: ambercoffeebrewery@gmail.com

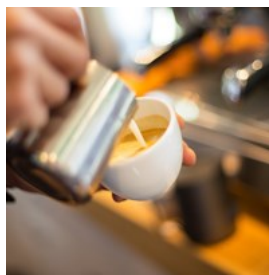
### Forest Cafe



Searching for a silent place for a break from the city? If so, Forest Cafe is the perfect choice for you. With a location in the forest, you can enjoy your coffee in a calm environment, and this is what attracts many youngsters and families to this special cafe.

Photo: Freedom\_Studio/Shutterstock.com  
Address: DD19 Lam Kam Road, Tai Po, Hong Kong  
Opening hours: Tuesday to Sunday: 12:00-18:00  
Phone: +852 9869 0173  
Email: lamtsuenforestcafe@gmail.com

### Feed Your Nerves



With the open kitchen on the first floor, you will find yourself staying in a warm and unrestrained place. There is no designated menu, but along with the savory Japanese dishes and homemade desserts, the food here will definitely "feed your nerves". On the second floor, you can buy postcards, handicrafts and accessories with simple and neat designs.

Photo: Lucky Business/Shutterstock.com  
Address: G/F, 434 Portland Street, Mong Kok, Kowloon, Hong Kong  
Public Transport: Exit D, Prince Edward MTR Station  
Opening hours: Tuesday to Sunday: 12:00-21:00

### Ovo Cafe



Set in an old converted market in Chai district, Ovo Cafe is well-known for its dedication to health and an eco-friendly lifestyle, and shares it by

serving fresh vegetarian cuisine. This little garden-like café is a great place to catch up with friends over some healthy food.

Photo: DUSAN ZIDAR/Shutterstock.com

Address: G/F 1 Wanchai Road, Wan Chai, Hong Kong

Opening hours: 11:30-22:00

Phone: +852 2527 6011

Internet: [www.ovocafe.com.hk](http://www.ovocafe.com.hk)

More Info: Vegetarian

### Barista Caffe



Barista Caffe is one of the most popular cafés in the district, not only for its superior coffee and rich waffles, but also for its reasonable prices and tasty dishes.

Photo: StudioByTheSea/Shutterstock.com

Address: 3/F, Citadines Hongkong Ashley, 18 Ashley Road, Tsim Sha Tsui, Kowloon, Hong Kong

Opening hours: Monday to Friday: 08:00-18:30. Saturday: 12:00-18:30.

Phone: +852 2511 0998

### The Alchemist Cafe Bistro



A café designed on around the concept of travel, The Alchemist Cafe Bistro is the perfect place for travellers, where all guests are free to read from their collections of travel books in a warm and relaxed environment. While you get inspired for your next trip, enjoy high-quality western cuisine or just a cup of coffee.

Photo: benjamas11/Shutterstock.com

Address: Shop 1, G/F, Ka On Building, 27-29 Poplar Street, Prince Edward, Kowloon, Hong Kong

Public Transport: Exit A Prince Edward MTR Station

Opening hours: 11:30-23:00

Phone: +852 2632 7103

Email: [enquiry.alchemist@gmail.com](mailto:enquiry.alchemist@gmail.com)

### BARS & NIGHTLIFE



Rawpixel.com/Shutterstock.com

Hong Kong only fully comes to life in the evening, and the pleasure-seeking visitor has plenty to choose from in terms of nightlife. Irrespective of whether you like English pubs, karaoke palaces, or designer bars, Hong Kong has it all. The districts of Central, Mong Kok, and Knutsford Terrace in Tsim Sha Tsui offer the coolest nightlife in the city.

### Delaney's Kowloon



Conveniently located in the heart of Tsim Sha Tsui, Delaney's Kowloon has brought a piece of Ireland into Hong Kong's nightlife since 1995.

Choose from the ground floor's very popular Irish pub in black and white, or the restaurant and sports bar on the floor above, with its rustic quality Irish pub food.

Photo: Pressmaster/Shutterstock.com

Address: Basement, Mary Building, 71-77 Peking Road, Tsim Sha Tsui, Hong Kong

Public Transport: Exit C1, Tsim Sha Tsui MTR Station

Opening hours: 08:00 - 02:00

Phone: +852 2301 3980

Internet: [www.delaneys.com.hk](http://www.delaneys.com.hk)

Email: [delkow@netvigator.com](mailto:delkow@netvigator.com)

## Dragon-I



Dragon-I serves Japanese and Chinese fusion cuisine during the day but in the evenings, it turns into a nightclub.

Have a drink with Hong Kong's film and pop stars in this small but cosy designer club in Soho. It may be difficult to get into Dragon-I, but it is well worth the effort. For those who don't manage to squeeze in, an alternative is happy hour from 5pm to 9pm on Wednesdays to Fridays.

Photo: Pressmaster/Shutterstock.com

Address: Podium, The Centrium, 60 Wyndham Street, Central, Hong Kong

Public Transport: Exit D2, Central MTR Station

Opening hours: Monday to Saturday: 12:00-15:00, 18:00-4:00. Sunday: 12:00-15:30.

Phone: +852 3110 1222

Internet: [www.dragon-i.com.hk](http://www.dragon-i.com.hk)

Email: [info@dragon-i.com.hk](mailto:info@dragon-i.com.hk)

## Eyebar



Take the elevator up and prepare yourself for a wow-moment! The city skyline view from up here is just amazing and the bar is decorated in

contemporary chinoiserie with beautiful turquoise and gold patterned floors. The Eyebar is a perfect place to have an evening drink (try their signature cocktail the 'Suzie Wrong').

Photo: Goncharov\_Artem/Shutterstock.com

Address: Shop 3001, 30/F, iSQUARE, 63 Nathan Road, Tsim Sha Tsui, Hong Kong

Public Transport: Exit H, Tsim Sha Tsui MTR Station

Opening hours: 23:30-10:30

Phone: +852 2487 3988

Internet: [www.elite-concepts.com/en/EYB/](http://www.elite-concepts.com/en/EYB/)

Email: [eyb@elite-concepts.com](mailto:eyb@elite-concepts.com)

## MO Bar



All-day dining and fancy cocktails in a sophisticated ambiance - this is what you can expect at MO Bar. The interior designer for this

bar, Adam Tihany, specialises in luxury spaces and it is easy to tell by the way this unique bar is designed. The clientele is largely bankers and celebrities who know what they want and where to get it.

Photo: Hengyan Chen/Shutterstock.com

Address: G/F, Landmark Mandarin Oriental Hotel, 15 Queen's Road, Central, Hong Kong

Opening hours: Monday to Wednesday: 7am-1:30am,

Thursday to Saturday: 7am-2am.

Phone: +852 2132 0077

Internet:

[www.mandarinoriental.com/landmark/fine-dining/mo-bar/](http://www.mandarinoriental.com/landmark/fine-dining/mo-bar/)

## Tai Lung Fung



Tai Lung Fung does not really follow the style of the other bars, but has its own unique flair. Do you want to have a taste of the good old days in Hong

Kong of the 60-70s? It is located just by the historic Blue House cultural centre, and the decoration is all made up of post-war items.

Photo: Aleksandrs Muizniek/Shutterstock.com

Address: 5 Hing Wan Street, Wan Chai, Hong Kong

Public Transport: Exit A3, Wan Chai MTR Station

Opening hours: Monday to Friday: 12:00-01:00, Saturday to Sunday: 15:00-01:00.

Phone: +852 2572 0055

Email: [info.tailungfung@gmail.com](mailto:info.tailungfung@gmail.com)



### Quinary



Looking for a world-class experience? Then head over to Quinary - no 41 in World's 50 Best Bars and no 6 in Asia's 50 Best Bars in 2016. Sip on

award-winning cocktails that offer multi-sensory enjoyment - it is playful, innovative, somber, soothing and exotic at the same time. Allow this chic bar to put a perfect end to your day with their excellent service and magical drinks.

Photo: Ekaterina latcenko/Shutterstock.com

Address: G/F, 56-58 Hollywood Road, Soho, Central, Hong Kong

Public Transport: Exit E1, Sheung Wan MTR Station

Opening hours: Monday to Saturday: 17:00-01:00

Phone: +852 2851 3223

Internet: [www.quinary.hk](http://www.quinary.hk)

Email: [info@quinary.hk](mailto:info@quinary.hk)

### Boba Bear



Boba Bear is a hookah lounge in Soho with bubble tea inspired cocktails. Shisha comes with fancy glowing light with various choices of

flavours; if you are not sure which one works best for you? Ask the staff for a popular mix. Remember to arrive early, or expected to stay in line for a while. Another Boba Bear Shisha bar is in Causeway Bay.

Photo: Chubykin Arkady/Shutterstock.com

Address: 31 Elgin Street, Central, Hong Kong

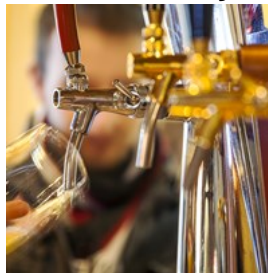
Opening hours: 20:00-00:00

Phone: +852 2468 1525

Internet: [www.bobabear.com](http://www.bobabear.com)

Email: [info@bobabear.com](mailto:info@bobabear.com)

### TAP: The Ale Project



Tired of colourful cocktails in this vibrant city? If you are in the mood for beer, TAP is the place for you. TAP gets its menu updated seasonally,

always keeping visits feeling fresh. Their craft beer, either brewed in Hong Kong or imported from around the world, is well worth your effort to get into this busy place.

Photo: Eunika Sopotnicka/Shutterstock.com

Address: G/F, 19 Hak Po St, Mong Kok, Hong Kong

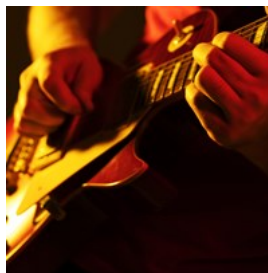
Opening hours: Daily 12-10pm

Phone: +852 2468 2010

Internet: [www.thealeproject.com](http://www.thealeproject.com)

Email: [info@thealeproject.com](mailto:info@thealeproject.com)

### All Night Long



This bar lives up to its name: a good place to hang out with friends all night long. Eight in-house rock bands, their live music after happy hour

with a dance floor is undoubtedly a highlight. Yet, if you would like to have a heart-to-heart over beer, wine, or cocktails till dawn, the sound-proof door prevents you getting distracted from the conversation.

Photo: Valua Vitaly/Shutterstock.com

Address: G/F,9 Knustsford Terrace, Tsim Sha Tsui, Hong Kong

Public Transport: Exit B1, Tsim Sha Tsui MTR Station

Opening hours: 16:00-06:00

Phone: +852 2367 9487

Internet: [liverockmusic247.com/bar-anl.html](http://liverockmusic247.com/bar-anl.html)

## OZONE



OZONE is the highest rooftop sky bar in the world, and offers an unbelievable view of the Victoria Harbour from the 118th floor. The bar is stylishly decorated, aiming to bring you a memorable night with their inventive food and drinks and outstanding service.

Photo: Melissa Paul/Shutterstock.com

Address: 118/F, The Ritz-Carlton Hong Kong, International Commerce Centre, 1 Austin Road West, Tsim Sha Tsui, Hong Kong

Opening hours: Monday to Wednesday: 17:00-01:00.

Thursday: 17:00-02:00. Friday: 17:00-03:00. Saturday: 15:00-03:00. Sunday: 12:00-00:00.

Phone: +852 2263 2270

Internet:

[www.ritzcarlton.com/en/hotels/china/hong-kong/dining/ozone](http://www.ritzcarlton.com/en/hotels/china/hong-kong/dining/ozone)

Email: [restaurantreservation.hk@ritzcarlton.com](mailto:restaurantreservation.hk@ritzcarlton.com)

## SHOPPING



*noina/Shutterstock.com*

Browse among beautiful Chinese antiques, designer clothes, jewellery, and above all, electronic gadgets. Find the "Quality Tourism Services (QTS)" sign and "No Fakes Pledge" sign to highlight your shopping experience in Hong Kong and return home fully supplied with only the best products. The main shopping areas are to be found in the districts of Causeway Bay, Central and Sheung Wan, Tsim Sha Tsui and

along Nathan Road to Mong Kok, but you can also take a half-an-hour bus to Stanley Market, or visit the famous night markets in Yau Ma Tei and Temple Street.

## Temple Street Night Market



Another well-known market is Temple Street Night Market, which got its name from Tin Hau Temple on the same street. This is the perfect place for anyone looking for clothes and watches. In the northern part of the street you can eat anything from simple noodle soup to fancy Chinese dishes.

Photo: vichie81/Shutterstock.com

Address: Temple Street, Yau Ma Tei, Kowloon, Hong Kong

## Sogo



Sogo is a gigantic Japanese department store with 13 floors. The wide range of products on offer is meticulously organised and comprises an impressive quantity of high-quality goods - everything from beauty products to clothes and sports equipment and more.

Photo: sirtravelalot/Shutterstock.com

Address: 555 Hennessy Road, Causeway Bay, Hong Kong

Opening hours: 10:00-22:00 (Varies from store to store)

Phone: +852 2833 8338

Internet: [www.sogo.com.hk/cwb/en/home/index.php](http://www.sogo.com.hk/cwb/en/home/index.php)

Email: [csteam@sogo.com.hk](mailto:csteam@sogo.com.hk)

### Tung Choi Street & Ladies' Market



This kilometre-long street market provides souvenirs of your choice, like local street plates, posters, paintings, stuffed animals, clothes, and accessories. Haggle over every price when shopping in the Ladies' Market!

Photo: leungchopan/Shutterstock.com

Address: Tung Choi Street, Mong Kok, Kowloon, Hong Kong  
Opening hours: 11:00 - 23:00 (Varies from store to store)  
Internet: [www.ladies-market.hk](http://www.ladies-market.hk)

### Stanley Market



A half an hour bus-ride from the city is the sandy beach at Stanley with its famous market. Here you will find some Chinese style souvenirs, such as key rings of Chinese food bowl, embroidery shoes, and calligraphy, and it is an easy way to get a little grain of sand between your toes into the bargain.

Photo: e X p o s e/Shutterstock.com

Address: Stanley Market, Hong Kong  
Internet: [www.hk-stanley-market.com](http://www.hk-stanley-market.com)  
Email: [contact@hk-stanley-market.com](mailto:contact@hk-stanley-market.com)

### Cat Street



Upper Lascar Road is known as Cat Street, was named during the open trade of Hong Kong in the beginning stage. As a street featured antiques, it is a fantastic place to find treasures for different ancient stuffs and gifts. Here, you can also discover and bargain in traditional art crafts, like silk products, embroideries and jade.

Photo: Iliia Torlin/Shutterstock.com

Address: Upper Lascar Road, Sheung Wan, Hong Kong  
Public Transport: Exit D2, MTR Central Station  
Internet: [www.cat-street.hk](http://www.cat-street.hk)  
Email: [contact@cat-street.hk](mailto:contact@cat-street.hk)

### Harbour City



Are you a big fan of shopping? You may consider having an empty luggage with you. Here's the largest shopping centre in Hong Kong featuring 450+ shops and stores, located along the Victoria Harbour. This vast plaza is not a maze but you would definitely forget your way out.

There are five sections:

Gateway Arcade and Ocean Centre: Luxury brands.

Ocean Terminal: Kids & Toys, Sportswear, Cosmetics.

Marco Polo Hong Kong Hotel Arcade: Lane Crawford, Cinema.

Star Annex: the bookshop Eslite

Photo: merzzie/Shutterstock.com

Address: Canton Road, Tsim Sha Tsui, Hong Kong  
Opening hours: 10:00-22:00  
Phone: +852 2118 8666  
Internet: [www.harbourcity.com.hk/en/](http://www.harbourcity.com.hk/en/)  
Email: [cs@harbourcity.com.hk](mailto:cs@harbourcity.com.hk)

### Sino Centre



The lower levels of the Sino Centre are a shopping mall, favoured by teenagers in Hong Kong, stuffed with Japanese anime, manga, toys, figures, video games, CDs, comics, magazines, gadgets, and consignment stores

with cubes.

Photo: TY Lim/Shutterstock.com

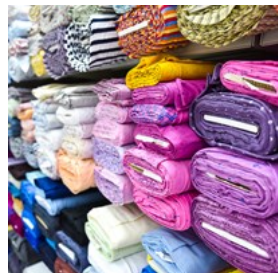
Address: 582-592 Nathan Road, Mong Kok, Hong Kong

Public Transport: Exit E2, Mong Kok MTR Station

Opening hours: 11:00 to 22:00 (Varies from store to store)

Internet: [sinocentre.bwebs.com](http://sinocentre.bwebs.com)

### Western Market



The oldest Edwardian-style market building in Hong Kong was renovated in 1991 and now has now been converted into a shopping complex, featuring shops with arts, crafts, and fabrics, surrounding visitors with the passion of old Hong Kong.

Photo: JGA/Shutterstock.com

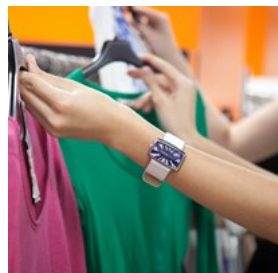
Address: 323 Des Voeux Road Central, Sheung Wan, Hong Kong

Phone: +852 6029 2675

Internet: [www.westernmarket.com.hk](http://www.westernmarket.com.hk)

Email: [westernmarket@lifestylegroup.com.hk](mailto:westernmarket@lifestylegroup.com.hk)

### Kwai Chung Plaza



This plaza is adjacent to Kwai Fong Plaza and Metroplaza. It is a favourite haunt of teenagers and young adults in search of cheap clothing, beauty products, fusion snacks and special drinks at the best price. If you are a budget traveller, you must bookmark this amazing place.

Photo: fizkes/Shutterstock.com

Address: 11 Kwai Foo Rd, Kwai Fong, Hong Kong

Public Transport: Exit E, Kwai Fong MTR Station

Opening hours: 11:00-22:00

Phone: +852 9316 4888

### Times Square



As the largest shopping center in Causeway Bay district, Times Square features more than 230 shops selling mid-priced to luxury brands, accessories, fashion, toys and electronics, as well as a supermarket, along with more than 20 restaurants serving Chinese, Western, Japanese, Korean cuisine.

Photo: Pressmaster/Shutterstock.com

Address: 1 Matheson Street, Causeway Bay, Hong Kong

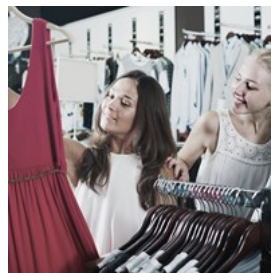
Public Transport: Exit A, Causeway Bay MTR Station

Opening hours: 10:00-22:00

Phone: +852 2118 8900

Internet: [www.timessquare.com.hk/eng](http://www.timessquare.com.hk/eng)

### Citygate Outlets



The largest outlet shopping mall in Hong Kong, Citygate Outlets is located next to the Hong Kong Airport and near The Ngong Ping 360. Here you will find more than 80 international brands with discounts of 30%-70%. Check-in with one of the largest outdoor kinetic fountains in Asia at the gate.

Photo: Iakov Filimonov/Shutterstock.com

Address: 20 Tat Tung Road, Tung Chung, Outlying Islands, Hong Kong.

Public Transport: Exit C, Tung Chung MTR Station

Opening hours: 10:00-22:00

Phone: +852 2109 2933

Internet: [www.citygateoutlets.com.hk/en.aspx](http://www.citygateoutlets.com.hk/en.aspx)

Email: [promotion@citygateoutlets.com](mailto:promotion@citygateoutlets.com)

### Shanghai Tang



Shanghai Tang is famous for their tasteful and luxurious versions of traditional Chinese clothes and their featured designers. Here you can easily spend hours discovering Chinese fashion for both women and men, as well as homeware and decorations and other products.

Photo: Karramba Production/Shutterstock.com

Address: Two Pacific Place, Shop 105, Level 1, 88 Queensway Road, Central, Hong Kong

Opening hours: 10:30-21:00

Phone: +852 2918 1505

Internet: [www.shanghaitang.com](http://www.shanghaitang.com)

### Mong Kok Computer Centre



This centre has three floors and seventy retailers with nothing but computer products which are frequently cheaper if you look in the Tsim Sha Tsui district. MCC provides up-to-standard service and professional advice. Have an eye on their events and promotions, you may find some related special offer, such as movie tickets redemption.

Photo: ESB Professional/Shutterstock.com

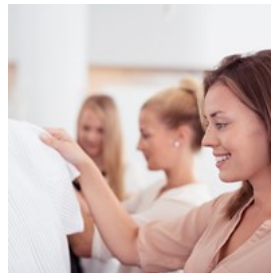
Address: 8 Nelson Street, Mong Kok, Hong Kong

Phone: +852 2781 0706

Internet: [www.mongkokcc.com](http://www.mongkokcc.com)

Email: [info@mkcomputer.com.hk](mailto:info@mkcomputer.com.hk)

### Lane Crawford



Lane Crawford, the first western department store in Hong Kong selling luxury fashion, beauty, and lifestyle goods, is well-stocked and well-organised with its excellent retail design. Some think it a trifle expensive, but it may be worth it for the good service.

Photo: racorn/Shutterstock.com

Address: 8 Finance Street, Central, Hong Kong

Opening hours: 10:00-21:00

Phone: +852 2118 2288

Internet: [www.lanecrawford.com](http://www.lanecrawford.com)

Email: [customercare@lanecrawford.com](mailto:customercare@lanecrawford.com)

More Info: Podium 3, IFC Mall

### Golden Computer Centre



Golden Computer Centre is a four-storey shopping centre at the heart of Mong Kok, famous for its all-inclusive electronic gadgets from computers, notebooks, phone supplies, computer games, to camera gear, all at reasonable prices.

Photo: Kwangmoozaa/Shutterstock.com

Address: Golden Building, 146-152 Fuk Wa St, Un Chau, Hong Kong

Public Transport: Exit D2, Shum Shui Po MTR Station

Opening hours: 11:00-19:00 (Varies from store to store)

### Langham Place



The biggest shopping mall in Mong Kok features more than 200 shops and trends towards young fashion trends mostly. It is a Hong Kong shopping hot spot for locals and tourists.

You can find stores of cosmetics, skin care, boutique, fashions, etc here and enjoy live shop on the 12th floor of the mall.

Photo: imtmphoto/Shutterstock.com

Address: 8 Argyle Street, Mong Kok, Kowloon, Hong Kong

Opening hours: 11:00-23:00

Phone: +852 3520 2800

Internet: [www.langhamplace.com.hk/en](http://www.langhamplace.com.hk/en)

### Dragon Centre



Dragon Centre is where the locals would always love to go and shop , searching their favorite items in reasonable price in this shoppers' paradise

of Sham Shui Po.

The vibrant shopping mall has the largest number of sales kiosk in Hong Kong, wide collections of chic knick knacks and accessories especially for ladies. It also featured an indoor ice skating rink and an arcade centre.

Photo: MIND AND I/Shutterstock.com

Address: 37 K, Yen Chow Street, Sham Shui Po, Kowloon, Hong Kong

Public Transport: Exit C1, Sham Shui Po MTR station

Opening hours: 10:00-22:00

Phone: +852 2360 0982

Internet: [www.dragoncentre.com.hk/index](http://www.dragoncentre.com.hk/index)

Email: [info@dragoncentre.com.hk](mailto:info@dragoncentre.com.hk)

### Elements



As designed with the five Chinese elements of water, fire, earth, wood and metal by world-renowned Benoy, Elements provides brands

from middle price to luxury of accessories and

cosmetics products, as well as large variety of fashion brands. The mall also has the largest organic food supermarket in Hong Kong.

The mall is linked with the city's tallest building- International Commerce Centre. Here you can get to sky100 and explore the impressive view of Hong Kong Island and Victoria Harbour.

Photo: wavebreakmedia/Shutterstock.com

Address: 1 Austin Road West, Tsim Sha Tsui, Kowloon, Hong Kong

Phone: +852 2735 5234

Internet: [www.elements.hk.com/eng/elements/main/index.jsp](http://www.elements.hk.com/eng/elements/main/index.jsp)

## TOURIST INFORMATION



*Perfect Lazybones/Shutterstock.com*

### Airports



Hong Kong's airport was previously in the city centre and it was an experience to fly in among the skyscrapers.

But the new airport is still a major sight. Feted as one of the most ambitious engineering projects ever, this large airport really is proof that the construction of an airport is a prestige project and a work of art, too. The British architect, Sir Norman Foster, has described the building as homage to travellers in modern times.

The new high-tech airport lies a little way outside Hong Kong, but the Airport Express leaves every twelve minutes from 5.50 - 24.48 and takes you downtown in 24 minutes. A number of public buses also take you into the city.

At the airport there is also an Airport Ambassador Programme and a Customer Service Centre you can turn to for more information and help.

Photo: Juan Garces

Phone: +852 2181 8888

Internet: [www.hongkongairport.com](http://www.hongkongairport.com)

Email: [online@hkairport.com](mailto:online@hkairport.com)

### Best Time to Visit Hong Kong



Weather-wise, the best period to plan a trip for is between October and December. It does get chilly during the winter, although not critically so,

and temperatures rarely fall far below 10 degrees Celsius.

Photo: VectorA/Shutterstock.com

### Passport / Visa



Hong Kong's visa policy is more liberal than that of mainland China. Citizens of most world countries may enter Hong Kong without a visa for periods

ranging from 14 to 180 days.

Photo: TukTuk Design/Shutterstock.com

### Public Transport



The clean and modern MTR, the tube, is often the quickest way to get around. A smart way is to buy an Octopus Card which can be used on

most of the local buses, trains, trams, and ferries. You can buy the Octopus Card at any MTR Customer Service Centre and Airport Express Customer Service Centre. You can reload the card at any convenience store, supermarket, or Add Value Machine at the station. If you do not want it as a souvenir, return it to the centre and get the refundable deposit.

You can also buy a one-day card on MTR, or a Airport Express Travel Pass for any 3 consecutive days of unlimited rides on the MTR with Airport Express.

The bus fare depends on how far you travel, but remember that you need the exact amount or an Octopus Card to pay. There is also a small minibus which is a mix of taxi and bus and takes slightly longer but might take you closer to where you want to go.

Trams are also a pleasant way to get around: double-deckers run east to west and vice versa on Hong Kong island, and can be used as a cheap alternative to sightseeing tour buses.

Photo: Pierre-Luc Auclair

Internet: [www.mtr.com.hk](http://www.mtr.com.hk)

More Info: [www.octopuscards.com](http://www.octopuscards.com)

## Taxi



It is cheap and simple to travel by taxi in Hong Kong - just flag down the first taxi that comes down the street. The colour of the taxi indicates its

geographical area. Red taxis are for most of Hong Kong, except Tung Chung Road and Lantau Island South. Green taxis are for the New Territories. Blue taxis are available on Lantau Island. All taxis provide service to the Hong Kong International Airport.

Photo: ArrivalGuides

## Post Office



The main post office is adjacent to the Star Ferry Terminal on Hong Kong Island. Opening hours vary from office to office. Stamps are available in

convenience stores. You can also find post boxes on most streets.

Photo: Andy Fuchs

Address: 2 Connaught Plaza, Hong Kong

Opening hours: Monday to Saturday 08:00-18:00, Sunday 12:00-17:00

Phone: +852 2921 2222

## Pharmacy



There are around 600 pharmacies in Hong Kong. If you want to see a pharmacist, look for the "Rx" sign with a red cross outside the pharmacy.

You can also get medicine at Mannings, Watsons, or any convenience store.

## SOS International Alarm

+852 2528 9900

For general enquiries and advice, call +852 2300 6555 or go to Hong Kong Central Hospital, 1b Lower Albert Road, Central, Tel +852 2537 8441.

Photo: Gemma Garner

Phone: +852 2528 9900

Internet: [www.internationalsos.com](http://www.internationalsos.com)

## Telephone

Country code: +852



Photo: Jardson Almeida

## Electricity

220 V / 50 Hz



Photo: Stirling Tschan

## Population

7.507 million (2019)

## Currency

Hong Kong Dollar (HKD)  
HK\$10 ~ US\$1,27

## Opening hours

Office hours are 9am-5:30pm from Monday to Friday, 9am-1pm on Saturdays. Many offices are closed for lunch between 1-2pm. Banks are open from 9am-4:30pm on Monday to Friday and 9am-12:30pm on Saturdays. Most businesses are open all day from 10am-6pm and in the tourist district they are often open until 9pm.

## Newspapers

The South China Morning Post



The Hong Kong Standard  
Herald Tribune  
Financial Times  
Asian Wall Street Journal

**Emergency numbers**  
999

**Tourist information**  
Hong Kong International Airport Visitor Centre:  
Buffer Halls A and B, Arrivals Level, Terminal 1, Hong Kong  
International Airport, Lantau Island

Hong Kong Island Visitor Centre:  
The Peak Piazza (between The Peak Tower and The Peak  
Galleria), The Peak, Hong Kong Island

Kowloon Visitor Centre:  
Star Ferry Concourse, Tsim Sha Tsui, Kowloon

Lo Wu Information Centre:  
2/F Arrival Hall, Lo Wu Terminal Building, Lo Wu, New  
Territories

HK Tourism Board Visitor Hotline: +852 2508 1234



Qingyuan (Qingcheng)

Yuantan

Conghua (Jiekou)

Guangdong

Bartang

Guzhu

Shijiao

106

Haudong

Paitan

Yonghanzhen

Zhengguo

324

Dalan

Datang

Chini

Huadu

Renhe Taihe

Jiufo

Lapu

Zangcheng

Boluo

324

Huidong

Tanbu

Shenshan

Jinggao

Ganbu

Dongguan

Huizhou (Huiyang)

324

Daling

Sanshui

Lishui

Guangzhou (Canton)

Ganbu

Dongguan

Huizhou (Huiyang)

324

Huidong

Xiaotang

Dali

Guangzhou (Canton)

Ganbu

Dongguan

Huizhou (Huiyang)

324

Huidong

Foshan

Nanhai

Foshan

Panyu

Dongguan

Huizhou (Huiyang)

324

Huidong

Xian

Xiqiap

Foshan

Panyu

Dongguan

Huizhou (Huiyang)

324

Huidong

Gaoming

Lecong

Foshan

Panyu

Dongguan

Huizhou (Huiyang)

324

Huidong

Jiujiang

Lunjiang

Foshan

Panyu

Dongguan

Huizhou (Huiyang)

324

Huidong

Heshan

Shunde

Foshan

Panyu

Dongguan

Huizhou (Huiyang)

324

Huidong

325

Xiaolan

Foshan

Panyu

Dongguan

Huizhou (Huiyang)

324

Huidong

Jiangmen

Xinhui

Foshan

Panyu

Dongguan

Huizhou (Huiyang)

324

Huidong

Shunangshui

Xinhui

Foshan

Panyu

Dongguan

Huizhou (Huiyang)

324

Huidong

Dajiang

Shuibu

Foshan

Panyu

Dongguan

Huizhou (Huiyang)

324

Huidong

Taishan

Sijiu

Foshan

Panyu

Dongguan

Huizhou (Huiyang)

324

Huidong

Sanhe

Chonglou

Foshan

Panyu

Dongguan

Huizhou (Huiyang)

324

Huidong

Doushan

Duhu

Foshan

Panyu

Dongguan

Huizhou (Huiyang)

324

Huidong

Guanghai

Longjing

Foshan

Panyu

Dongguan

Huizhou (Huiyang)

324

Huidong

Dajin Island

Longjing

Foshan

Panyu

Dongguan

Huizhou (Huiyang)

324

Huidong

Shangchuan Island

Longjing

Foshan

Panyu

Dongguan

Huizhou (Huiyang)

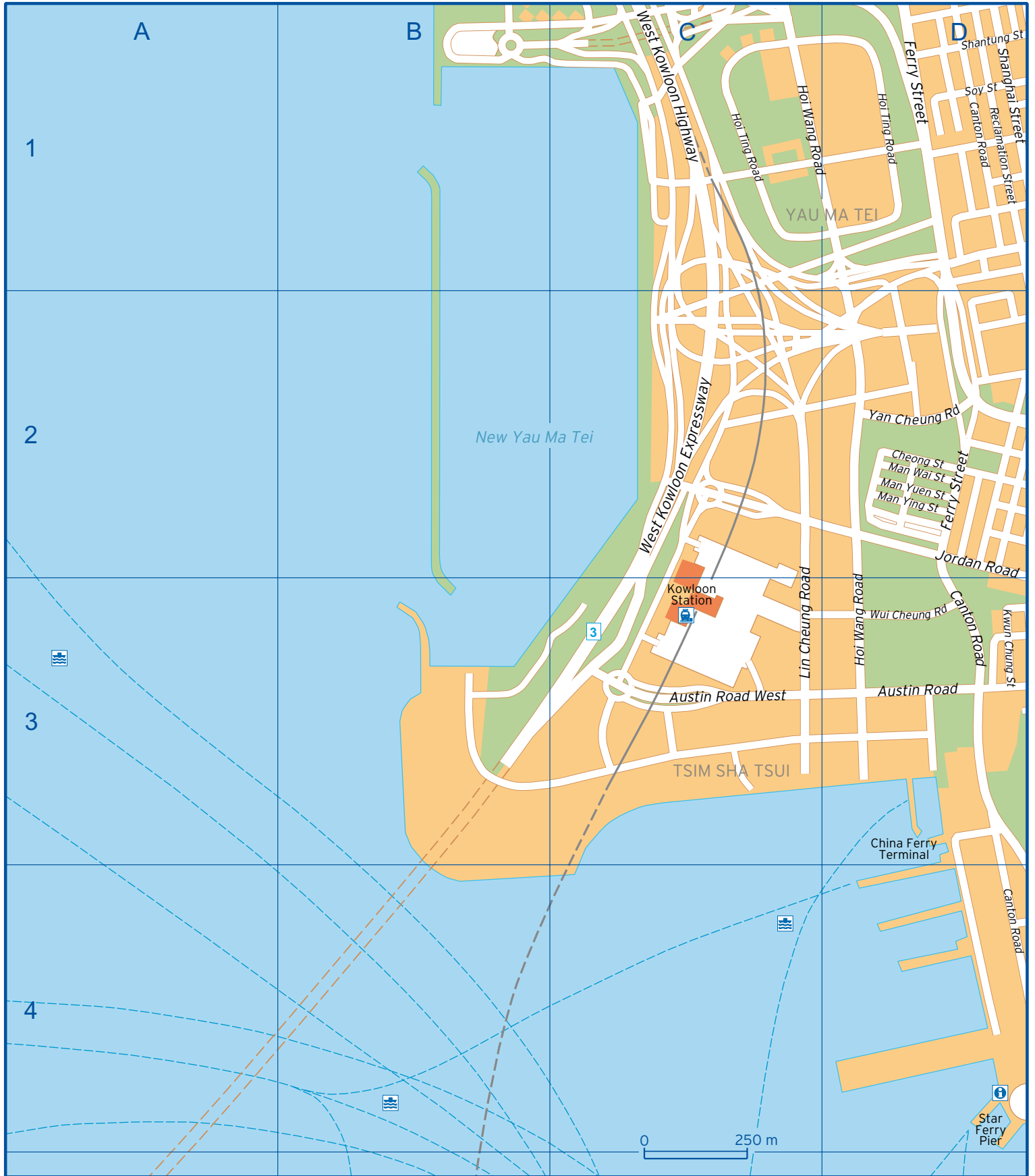
324

Huidong

South China Sea (Nan Hai)

0 30 km







**KOWLOON**

0 250 m





A

B

C

5

6

7

8

SHEUNG WAN

CHUNG WAN

HONG KONG ISLAND

PUN SHAN KUI

SHAN TENG

250 m



# Victoria Harbour



5

6 HONG KONG ISLAND

7

8

0 250 m





|                    |          |                        |          |                         |             |
|--------------------|----------|------------------------|----------|-------------------------|-------------|
| Aberdeen Street    | B6       | Chung Hau Street       | F1 F2    | Haiphong Road           | D4 E4       |
| Aberdeen Tunnel    | F8       | City Garden Road       | H5       | Hamilton Street         | D1          |
| Albany Road        | B7       | Cleverly Street        | A6 B5    | Hankow Road             | E4          |
| Amoy Street        | E7       | Cloud View Road        | I5       | Hanoi Road              | E4          |
| Anton Street       | D7       | Cochrane Street        | B6       | Harbour Drive           | E7          |
| Arbuthnot Road     | B6 B7    | Conduit Road           | A6       | Harbour Road            | E6          |
| Arsenal Street     | D7       | Connaught Road Central | B6       | Harcourt Road           | C6 D7       |
| Arthur Street      | D2       | Connaught Road West    | A5       | Harlech Road            | A8          |
| Ashley Road        | D4       | Convention Avenue      | E6       | Hart Avenue             | E4          |
| Austin Avenue      | E3       | Coombe Road            | D8       | Hau Fook Street         | E3          |
| Austin Road        | D3 E3    | Cox's Road             | E3       | Hau Man Street          | F1          |
| Austin Road West   | C3       | Cross Harbour Tunnel   | F5       | Hau Ship Street         | D7 E7       |
| Bailey Street      | G1       | Cross Lane             | E7       | Healthy Street East     | J5          |
| Baker Street       | G2       | Cross Street           | E7       | Healthy Street West     | J5          |
| Barker Road        | B8       | D Aguilar Street       | B6       | Heard Street            | E7 F7       |
| Battery Path       | C7       | Des Voeux Road West    | A5       | Hennessy Road           | E7 F7       |
| Blacks Link        | E8       | Dock Street            | G2       | Hillwood Road           | E3          |
| Blue Pool Road     | G8       | Dragon Road            | H6       | Hing Fat Street         | H6          |
| Bonham Road        | A6       | Drake Street           | C7 D7    | Hip Woo Lane            | G8          |
| Bonham Strand West | A5 A6    | Dundas Street          | D1 E1    | Ho Man Tin Hill Road    | E1 F1       |
| Borrett Road       | C7 D7    | Dyer Avenue            | G2 H2    | Ho Man Tin Street       | E1          |
| Bowen Drive        | D7       | East Kowloon Corridor  | G1 G2    | Hoi Ting Road           | C1 D1       |
| Bowen Road         | C7 D7    | Eastern Hospital Road  | G7       | Hoi Wang Road           | C1 D2 D3    |
| Bowring Street     | D3 E3    | Edinburgh Place        | C6       | Hok Cheung Street       | H2          |
| Bowrington Road    | F7       | Electric Road          | H5       | Hok Yuen Street         | G2          |
| Braemar Hill Road  | I5       | Expo Drive Central     | E6       | Hollywood Road          | A6          |
| Bridges Street     | A6       | Expo Drive East        | E6       | Hong Chong Road         | F3          |
| Broadwood Road     | G8       | Expo Drive West        | E6       | Hornsey Road            | B7          |
| Bulkeley Street    | G2       | Fa Yuen Street         | E1       | Hospital Road           | A6          |
| Caine Lane         | A6       | Fat Kwong Street       | F1 G2    | Humphrey's Avenue       | E4          |
| Caine Road         | A6 B6 B7 | Fenwick Street         | D7       | Hung Fook Street        | G1          |
| Cameron Lane       | E4       | Ferry Street           | D1 D2    | Hung Hing Road          | E6 F6       |
| Cameron Road       | E4       | Findlay Road           | A8 B8    | Hung Hom Bypass         | F3 G3       |
| Canal Road East    | F6 F7    | Fleming Road           | E6 E7    | Hung Hom Road           | G2 G3 H1 H2 |
| Canal Road West    | F6 F7    | Fort Street            | I5       | Hung Hom South Road     | G3          |
| Canton Road        | D1 D3 D4 | Fortress Hill Road     | H5       | Hung Lok Road           | G3          |
| Carnarvon Road     | E3 E4    | Fung Fai Terrace       | F8       | Hung Luen Road          | G3          |
| Caroline Hill Road | G7       | Fung Lane              | D7 E7    | Ice House Street        | B7 C6       |
| Causeway Road      | G7 H6    | Garden Road            | C7       | Island Eastern Corridor | H5 I4 J4 J5 |
| Chater Road        | C6       | Gascoigne Road         | E2       | Jackson Road            | C6          |
| Chatham Road North | F2       | Gilles Avenue North    | G1 G2    | Jaffe Road              | E7 F6 F7 G6 |
| Chatham Road South | E3 F3    | Gilles Avenue South    | G2       | Jardines Bazaar Street  | G7          |
| Cheong Street      | D2       | Gloucester Road        | E7 F6 G6 | Jardines Crescent       | G7          |
| Cheong Wan Road    | F3       | Good Shepherd Street   | F1       | Java Road               | I5          |
| Chi Kiang Street   | G1 H1    | Gordon Road            | H6       | Jervois Street          | A6 B6       |
| Chi Wo Street      | E2       | Graham Street          | B6       | Johnston Road           | D7 E7       |
| Chun Fai Road      | H7 H8    | Granville Road         | E3       | Jordan Path             | E3          |
| Chun Yeung Street  | I5       | Great George Street    | G6       | Jordan Road             | D2 D3       |
| Chun Yi Lane       | E1       | Gutzlaff Street        | B6       | Jubilee Street          | B6          |

|                     |          |                    |             |                             |             |
|---------------------|----------|--------------------|-------------|-----------------------------|-------------|
| Justice Drive       | D7       | May Road           | B7 B8 C8    | Princess Margaret Road      | E1 F1 F2    |
| Ka Ning Path        | G7 H7    | Mei King Street    | H1          | Princess Margaret Road Link | F3 G3       |
| Kai Ming Street     | G1       | Mercury Street     | H6          | Public Square Street        | D2 E2       |
| Kam Hong Street     | I5       | Middle Road        | E4          | Pui Ching Road              | F1          |
| Kansu Street        | D2 E2    | Minden Avenue      | E4          | Queens Road Central         | A6 B6 C6 C7 |
| Kau Pui Lung Road   | G1       | Ming Street        | D7          | Queens Road East            | D7 E7 F7    |
| Kennedy Road        | C7 D7    | Model Lane         | J5          | Queens Road West            | A5          |
| Kennedy Street      | E7 E8    | Mody Lane          | F4          | Queensway                   | D7          |
| Kimberley Road      | E3       | Mody Road          | E4 F3 F4    | Reclamation Street          | D1          |
| Kimberley Street    | E3       | Mody Square        | E4 F4       | Robinson Road               | A6 B7       |
| Kin Wah Street      | I5       | Moorsom Road       | H8          | Russel Street               | F7          |
| King Kwong Street   | G8       | Moreton Terrace    | G7          | Sai Yeung Choi Street South | D1          |
| King Ming Road      | G6 H5    | Morrison Hill Road | F7          | Saigon Street               | D2          |
| Kings Road          | H6 I5 J5 | Morrison Street    | A5 A6       | Salisbury Road              | E4 F3 F4    |
| King's Park Rise    | E2       | Mosque Junction    | A7 B7       | School Street               | H7          |
| Knutsford Terrace   | E3       | Mosque Street      | A6 B7       | Science Museum Road         | F3          |
| Ko Shan Road        | G1       | Mount Austin Road  | A7 A8       | Severn Road                 | B8 C8       |
| Ko Shing Street     | A5       | Mount Butler Road  | I8          | Seymour Road                | A6          |
| Kowloon City Road   | G1       | Mui Road           | I5 J5       | Shan Kwong Road             | G8          |
| Kowloon Park Drive  | D4       | Murray Road        | C6 C7       | Shanghai Street             | D1 D2       |
| Kwun Chung Street   | D3       | Nanking Street     | D2 E2       | Shantung Street             | D1          |
| Lai Tak Tsuen Road  | H7       | Nathan Road        | E4          | Sharp Street                | F7          |
| Lee Garden Road     | F7 G7    | Ngan Hon Street    | G1          | Shek Lung Street            | D1          |
| Lee Tung Street     | E7       | Ning Po Street     | D2          | Shell Street                | H5          |
| Leighton Road       | F7 G7    | North View Street  | I5          | Shelter Street              | G7          |
| Li Chit Street      | D7       | Observatory Road   | E3          | Sheung Lok Street           | F1          |
| Lin Cheung Road     | C2 C3    | Oi King Street     | G3          | Shin Wong Street            | A6 B6       |
| Link Road           | G7       | Oil Street         | H5          | Shiu Fai Teerace            | E8 F8       |
| Lo Lung Hang Street | F2 G2    | Old Balley Street  | B6          | Shu Kuk Street              | I5          |
| Lock Road           | E4       | Old Peak Road      | A7 A8 B7 B8 | Shun Yung Street            | G1 G2       |
| Lockhart Road       | E7 F7    | O'Brien Road       | E7          | Shung King Street           | G3 H3       |
| Lok Ku Road         | A6       | Pak Fuk Road       | J5          | Sik On Street               | D7          |
| Lok Shan Road       | G1       | Pak Hoi Street     | D2          | Sing Woo Road               | G8          |
| Lower Albert Road   | B7       | Parkes Street      | E2          | Sir Cecils Ride             | I7 I8       |
| Luard Road          | E7       | Paterson Street    | G6          | Soy Street                  | D1 E1       |
| Lugard Road         | A7       | Peak Road          | A8 C8 D8    | Sports Road                 | F7          |
| Lun Fat Street      | D7       | Peel Street        | B6          | Spring Garden Lane          | E7          |
| Lung Wui Road       | D6       | Peking Road        | D4 E4       | St. Francis Street          | D7          |
| Ma Tau Wai Road     | G1 G2    | Percival Street    | F6 F7       | Stanley Street              | B6          |
| Macdonnell Road     | C7       | Perkins Road       | H8          | Star Street                 | D7          |
| Magazine Gap Road   | C8       | Pier Street        | D6          | Station Lane                | G2          |
| Man Lok Street      | G2       | Pitt Street        | D1          | Staunton Street             | B6          |
| Man Ming Lane       | D2 E1    | Plantation Road    | B8          | Stewart Road                | E7          |
| Man Wai Street      | D2       | Plunketts Road     | B8          | Stone Nullah Lane           | E7          |
| Man Ying Street     | D2       | Po Loi Street      | G2 G3       | Stubbs Road                 | D8 E8 F8    |
| Man Yiu Street      | C6       | Po Yan Street      | A6          | Sun Street                  | D7          |
| Man Yuen Street     | D2       | Portland Street    | D1          | Sung Chi Street             | G1 G2       |
| Marble Road         | I5       | Pound Lane         | A6          | Sung On Street              | G1 G2       |
| Marsh Road          | F6 F7    | Prat Avenue        | E4          | Sung Ping Street            | H1 H2       |

|                      |          |                         |       |                      |          |
|----------------------|----------|-------------------------|-------|----------------------|----------|
| Supreme Court Road   | C7 D7    | Tsui Man Street         | G8    | Wing Hing Street     | H6       |
| Swatow Street        | E7       | Tung Choi Street        | E1    | Wing Lok Street East | B6       |
| Tai Hang Drive       | H7       | Tung Kun Street         | D2    | Wing Lok Street West | A5       |
| Tai Hang Road        | H7 H8    | Tung Lo Wan Road        | H7    | Wing Sing Lane       | D2 E2    |
| Tai Ping Shan Street | A6       | Upper Albert Road       | B7    | Winslow Street       | F2       |
| Tai Wan Road         | H2       | Victoria Park Road      | G6    | Wong Nai Chung Road  | F7 F8 G8 |
| Tai Wo Street        | E7       | View Road               | H6    | Wood Road            | E7       |
| Tai Yuen Street      | E7       | Village Road            | F8 G8 | Woosung Street       | D2 E2    |
| Tak Fung Street      | G3 H3    | Wai King Street         | H1    | Wuhu Street          | G2       |
| Tak Hong Street      | G2 H2 H3 | Wai Tsui Crescent       | I6    | Wui Cheung Road      | D3       |
| Tak Man Street       | G2       | Wai Wan Lane            | G2    | Wun Sha Street       | H7       |
| Tak On Street        | H3       | Walker Road             | G2    | Wylie Road           | E1 E2    |
| Tak Shing Street     | E3       | Wan Chai Gap Road       | E8    | Wyndham Street       | B6       |
| Tang Lung Street     | F7       | Wan Chai Road           | E7 F7 | Yan Cheung Road      | D2       |
| Tanner Road          | I5 J5    | Wan Hoi Street          | H2 H3 | Yan Fung Street      | F2 G2    |
| Temple Street        | D2       | Wan Shing Street        | F6    | Yat Sin Street       | F7       |
| Thomson Road         | E7       | Waterloo Road           | D1 E1 | Yee King Road        | H6       |
| Tin Chiu Street      | I5       | Wellington Street       | B6    | Yee Wo Street        | G7       |
| Tin Hau Temple Road  | H6 I5    | West Kowloon Expressway | C2    | Yiu Wa Street        | F7       |
| To Kwa Wan Road      | G1 H1    | West Kowloon Highway    | C1    | Yuk Choi Road        | F3       |
| Tonochoy Road        | E6 F6 F7 | Whampoa Street          | G2    | Yuk Yat Street       | H1       |
| Tree Drive           | C6 C7    | Wharf Road              | I5    | Yun Ping Road        | G7       |
| Tregunter Path       | B7 B8    | Whitfield Road          | H5 H6 |                      |          |